

Anti-ERCC1 antibody [8F1] ab2356

28 References [4 图像](#)

概述

产品名称	Anti-ERCC1抗体[8F1]
描述	小鼠单克隆抗体[8F1] to ERCC1
宿主	Mouse
经测试应用	适用于: ICC/IF, IHC-P, Flow Cyt
种属反应性	与反应: Human
免疫原	Recombinant full length protein corresponding to Human ERCC1.
阳性对照	Tonsil.
常规说明	<p>The Life Science industry has been in the grips of a reproducibility crisis for a number of years. Abcam is leading the way in addressing this with our range of recombinant monoclonal antibodies and knockout edited cell lines for gold-standard validation. Please check that this product meets your needs before purchasing.</p> <p>If you have any questions, special requirements or concerns, please send us an inquiry and/or contact our Support team ahead of purchase. Recommended alternatives for this product can be found below, along with publications, customer reviews and Q&As</p>

性能

形式	Liquid
存放说明	Shipped at 4°C. Store at +4°C short term (1-2 weeks). Store at -20°C or -80°C. Avoid freeze / thaw cycle.
存储溶液	<p>pH: 7.3</p> <p>Preservative: 0.05% Sodium azide</p> <p>Constituent: 1% BSA</p>
纯度	IgG fraction
克隆	单克隆
克隆编号	8F1
骨髓瘤	unknown
同种型	IgG2b
轻链类型	unknown

应用

The Abpromise guarantee

Abpromise™ 承诺保证使用 ab2356 于以下的经测试应用

“应用说明”部分 下显示的仅为推荐的起始稀释度;实际最佳的稀释度/浓度应由使用者检定。

应用	Ab 评论	说明
ICC/IF		Use a concentration of 1 µg/ml.
IHC-P		1/50 - 1/100. Perform heat mediated antigen retrieval before commencing with IHC staining protocol.
Flow Cyt		Use 1µg for 10 ⁶ cells. ab170192 - Mouse monoclonal IgG2b, is suitable for use as an isotype control with this antibody.

靶标

功能

Structure-specific DNA repair endonuclease responsible for the 5'-incision during DNA repair.

疾病相关

Defects in ERCC1 are the cause of cerebro-oculo-facio-skeletal syndrome type 4 (COFS4) [MIM:610758]. COFS is a degenerative autosomal recessive disorder of prenatal onset affecting the brain, eye and spinal cord. After birth, it leads to brain atrophy, hypoplasia of the corpus callosum, hypotonia, cataracts, microcornea, optic atrophy, progressive joint contractures and growth failure. Facial dysmorphism is a constant feature. Abnormalities of the skull, eyes, limbs, heart and kidney also occur.

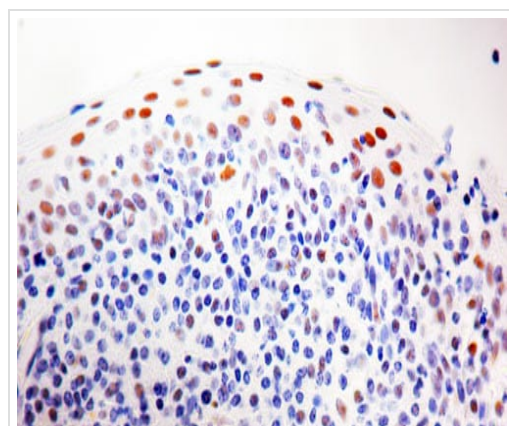
序列相似性

Belongs to the ERCC1/RAD10/SWI10 family.

细胞定位

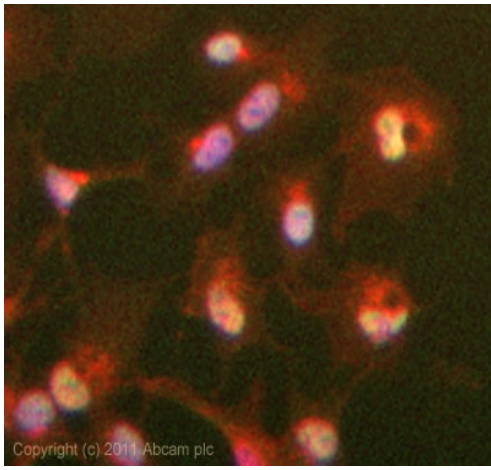
Nucleus.

图片

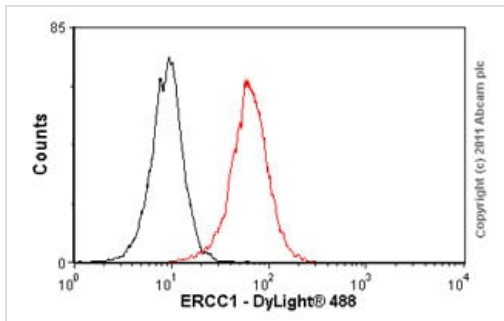


Immunohistochemical analysis of formalin-fixed, paraffin-embedded Human tonsil tissue with ab2356 labelling ERCC1.

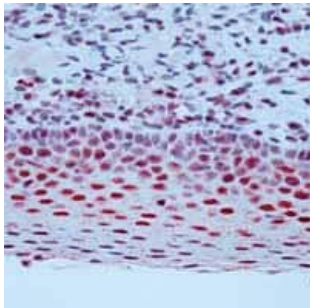
Immunohistochemistry (Formalin/PFA-fixed paraffin-embedded sections) - Anti-ERCC1 antibody [8F1] (ab2356)



Immunocytochemistry/ Immunofluorescence - Anti-ERCC1 antibody [8F1] (ab2356)



Flow Cytometry - Anti-ERCC1 antibody [8F1] (ab2356)



Immunohistochemistry (Formalin/PFA-fixed paraffin-embedded sections) - Anti-ERCC1 antibody [8F1] (ab2356)

ICC/IF image of ab2356 stained HepG2 cells. The cells were 4% formaldehyde fixed (10 min) and then incubated in 1%BSA / 10% normal goat serum / 0.3M glycine in 0.1% PBS-Tween for 1h to permeabilise the cells and block non-specific protein-protein interactions. The cells were then incubated with the antibody (ab2356, 1µg/ml) overnight at +4°C. The secondary antibody (green) was Alexa Fluor® 488 goat anti-mouse IgG (H+L) used at a 1/1000 dilution for 1h. Alexa Fluor® 594 WGA was used to label plasma membranes (red) at a 1/200 dilution for 1h. DAPI was used to stain the cell nuclei (blue) at a concentration of 1.43µM.

Overlay histogram showing HeLa cells stained with ab2356 (red line). The cells were fixed with 100% methanol (5 min) and then permeabilized with 0.1% PBS-Tween for 20 min. The cells were then incubated in 1x PBS / 10% normal goat serum / 0.3M glycine to block non-specific protein-protein interactions followed by the antibody (ab2356, 1µg/1x10⁶ cells) for 30 min at 22°C. The secondary antibody used was DyLight® 488 goat anti-mouse IgG (H+L) ([ab96879](#)) at 1/500 dilution for 30 min at 22°C. Isotype control antibody (black line) was mouse IgG2b [PLPV219] ([ab91366](#), 2µg/1x10⁶ cells) used under the same conditions. Acquisition of >5,000 events was performed. This antibody gave a positive signal in HeLa cells fixed with 4% paraformaldehyde (10 min)/permeabilized in 0.1% PBS-Tween used under the same conditions.

Immunohistochemical analysis of formalin fixed paraffin embedded human tonsil tissue sections with ab2356 labelling ERCC1.

Please note: All products are "FOR RESEARCH USE ONLY. NOT FOR USE IN DIAGNOSTIC PROCEDURES"

Our Abpromise to you: Quality guaranteed and expert technical support

- Replacement or refund for products not performing as stated on the datasheet
- Valid for 12 months from date of delivery
- Response to your inquiry within 24 hours

- We provide support in Chinese, English, French, German, Japanese and Spanish
- Extensive multi-media technical resources to help you
- We investigate all quality concerns to ensure our products perform to the highest standards

If the product does not perform as described on this datasheet, we will offer a refund or replacement. For full details of the Abpromise, please visit <https://www.abcam.cn/abpromise> or contact our technical team.

Terms and conditions

- Guarantee only valid for products bought direct from Abcam or one of our authorized distributors