




Anti-ErbB4 / HER4 antibody [5G6B4] - C-terminal ab204959

1 References **4 图像**

概述

产品名称	Anti-ErbB4 / HER4抗体[5G6B4] - C-terminal
描述	小鼠单克隆抗体[5G6B4] to ErbB4 / HER4 - C-terminal
宿主	Mouse
经测试应用	适用于: Flow Cyt, IHC-P, WB
种属反应性	与反应: Human 预测可用于: Mouse 
免疫原	Recombinant fragment corresponding to Human ErbB4/ HER4 aa 1150 to the C-terminus (C terminal). Expressed in E. coli. Database link: Q15303 <div>  Run BLAST with  Run BLAST with </div>
阳性对照	Human ErbB 4 (amino acids 1159-1308) recombinant protein. Lysate from HEK293 cells transfected with ErbB 4 (amino acids 1159-1308). Human cervical cancer tissue. HeLa cells.
常规说明	<p>The Life Science industry has been in the grips of a reproducibility crisis for a number of years. Abcam is leading the way in addressing this with our range of recombinant monoclonal antibodies and knockout edited cell lines for gold-standard validation. Please check that this product meets your needs before purchasing.</p> <p>If you have any questions, special requirements or concerns, please send us an inquiry and/or contact our Support team ahead of purchase. Recommended alternatives for this product can be found below, along with publications, customer reviews and Q&As</p>

性能

形式	Liquid
存放说明	Shipped at 4°C. Store at +4°C short term (1-2 weeks). Upon delivery aliquot. Store at -20°C long term. Avoid freeze / thaw cycle.
存储溶液	Preservative: 0.05% Sodium azide Constituent: 99% PBS
纯度	Protein G purified
纯化说明	Purified from tissue culture supernatant.
克隆	单克隆

克隆编号5G6B4

同种型IgG1

应用

The Abpromise guarantee **Abpromise™**承诺保证使用ab204959于以下的经测试应用

“应用说明”部分 下显示的仅为推荐的起始稀释度;实际最佳的稀释度/浓度应由使用者检定。

应用	Ab评论	说明
Flow Cyt		1/200 - 1/400.
IHC-P		1/200 - 1/1000.
WB		1/500 - 1/2000. Predicted molecular weight: 147 kDa.

靶标

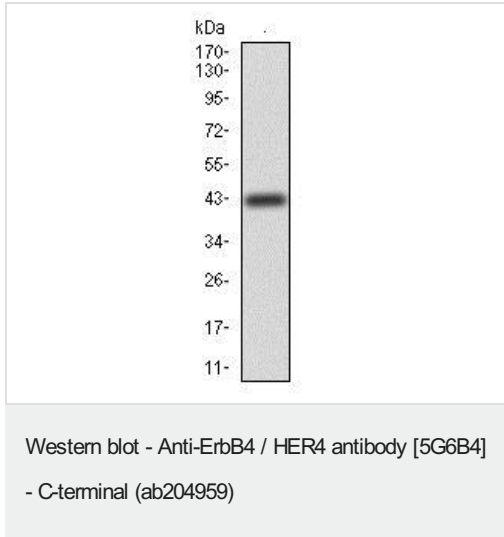
功能	Specifically binds and is activated by neuregulins, NRG-2, NRG-3, heparin-binding EGF-like growth factor, betacellulin and NTAK. Interaction with these factors induces cell differentiation. Not activated by EGF, TGF-A, and amphiregulin. The C-terminal fragment (CTF) of isoform JMA-A CYT-2 (containing E4ICD2) can stimulate transcription in the presence of YAP1. ERBB4 intracellular domain is involved in the regulation of cell growth. Conflicting reports are likely due at least in part to the opposing effects of the isoform-specific and nuclear-translocated ERBB4 intracellular domains (E4ICD1 and E4ICD2). Overexpression studies in epithelium show growth inhibition using E4ICD1 and increased proliferation using E4ICD2. E4ICD2 has greater in vitro kinase activity than E4ICD1. The kinase activity is required for the nuclear translocation of E4ICD2.
组织特异性	Expressed at highest levels in brain, heart, kidney, in addition to skeletal muscle, parathyroid, cerebellum, pituitary, spleen, testis and breast. Lower levels in thymus, lung, salivary gland, and pancreas. Isoform JM-A CYT-1 and isoform JM-B CYT-1 are expressed in cerebellum, but only the isoform JM-B is expressed in the heart.
序列相似性	Belongs to the protein kinase superfamily. Tyr protein kinase family. EGF receptor subfamily. Contains 1 protein kinase domain.
翻译后修饰	<p>Isoform JM-A CYT-1 and isoform JM-A CYT-2 but not isoform JM-B CYT-1 and isoform JM-B CYT-2 are processed by ADAM17. Proteolytic processing in response to ligand or 12-O-tetradecanoylphorbol-13-acetate stimulation results in the production of 120 kDa soluble receptor forms and intermediate membrane-anchored 80 kDa fragments (m80HER4), which are further processed by a presenilin-dependent gamma-secretase to release the respective cytoplasmic intracellular domain E4ICD (either E4ICD1/s80Cyt1 or E4ICD2/s80Cyt2). Membrane-anchored 80 kDa fragments of the processed isoform JM-A CYT-1 are more readily degraded by the proteasome than fragments of isoform JM-A CYT-2 suggesting a prevalence of E4ICD2 over E4ICD1.</p> <p>Ligand-binding increases phosphorylation on tyrosine residues. Isoform JM-A CYT-2 is constitutively phosphorylated on tyrosine residues in a ligand-independent manner. E4ICD2 but not E4ICD1 is phosphorylated on tyrosine residues.</p> <p>Ubiquitinated. The ERBB4 intracellular domain is ubiquitinated and targeted to proteosomal degradation during mitosis mediated by the APC/C complex. Isoform JM-A CYT-1 and isoform</p>

JM-B CYT-1 are ubiquitinated by WWP1. The ERBB4 intracellular domain (E4ICD1) is ubiquitinated, and this involves NEDD4.

细胞定位

Membrane and Nucleus. Following proteolytical processing E4ICD (E4ICD1 or E4ICD2 generated from the respective isoforms) is translocated to the nucleus. Significantly more E4ICD2 than E4ICD1 is found in the nucleus. E4ICD2 colocalizes with YAP1 in the nucleus.

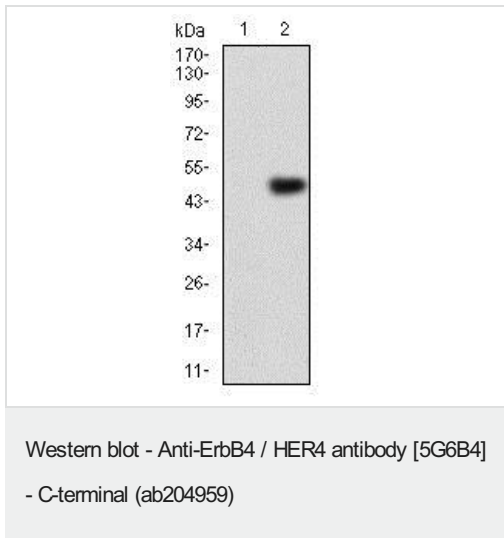
图片



Anti-ErbB4 / HER4 antibody [5G6B4] - C-terminal (ab204959) at 1/500 dilution + human ErbB 4 (amino acids 1159-1308) recombinant protein.

Predicted band size: 147 kDa

(Expected MW is 43.3 kDa)

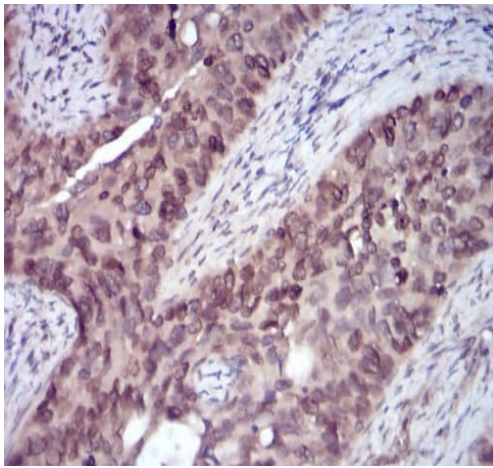


All lanes : Anti-ErbB4 / HER4 antibody [5G6B4] - C-terminal (ab204959) at 1/500 dilution

Lane 1 : HEK293 cell lysate.

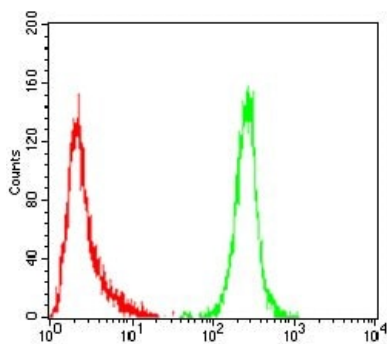
Lane 2 : Lysate from HEK293 cells transfected with ErbB 4 (amino acids 1159-1308)-hlgGfc.

Predicted band size: 147 kDa



Immunohistochemical analysis of paraffin-embedded, DAB-stained human cervical cancer tissue, labeling ErbB4 / HER4 using ab204959 at a 1/200 dilution

Immunohistochemistry (Formalin/PFA-fixed paraffin-embedded sections) - Anti-ErbB4 / HER4 antibody [5G6B4] - C-terminal (ab204959)



Flow cytometry analysis of HeLa cells labeling ErbB4 / HER4 (green) using ab204959 at a 1/200 dilution, and negative control cells (red).

Flow Cytometry - Anti-ErbB4 / HER4 antibody [5G6B4] - C-terminal (ab204959)

Please note: All products are "FOR RESEARCH USE ONLY. NOT FOR USE IN DIAGNOSTIC PROCEDURES"

Our Abpromise to you: Quality guaranteed and expert technical support

- Replacement or refund for products not performing as stated on the datasheet
- Valid for 12 months from date of delivery

- Response to your inquiry within 24 hours
- We provide support in Chinese, English, French, German, Japanese and Spanish
- Extensive multi-media technical resources to help you
- We investigate all quality concerns to ensure our products perform to the highest standards

If the product does not perform as described on this datasheet, we will offer a refund or replacement. For full details of the Abpromise, please visit <https://www.abcam.cn/abpromise> or contact our technical team.

Terms and conditions

- Guarantee only valid for products bought direct from Abcam or one of our authorized distributors