

Anti-ErbB3 / HER3 (phospho Y1222) antibody [EPR5807] ab133445

重组 RabMAb

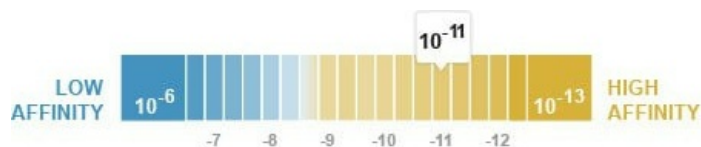
★★★★☆ [2 Abreviews](#) [1 References](#) [3 图像](#)

概述

产品名称	Anti-ErbB3 / HER3 (phospho Y1222)抗体[EPR5807]
描述	兔单克隆抗体[EPR5807] to ErbB3 / HER3 (phospho Y1222)
宿主	Rabbit
经测试应用	适用于: WB 不适用于: Flow Cyt or IHC-P
种属反应性	与反应: Human
免疫原	Synthetic peptide. This information is proprietary to Abcam and/or its suppliers.
阳性对照	Lysate of SKBR3 cells treated with neuregulin.
常规说明	This product is a recombinant monoclonal antibody, which offers several advantages including: <ul style="list-style-type: none"> - High batch-to-batch consistency and reproducibility - Improved sensitivity and specificity - Long-term security of supply - Animal-free production For more information see here . Our RabMAb [®] technology is a patented hybridoma-based technology for making rabbit monoclonal antibodies. For details on our patents, please refer to RabMAb[®] patents . Mouse, Rat: We have preliminary internal testing data to indicate this antibody may not react with these species. Please contact us for more information.

性能

形式	Liquid
存放说明	Shipped at 4°C. Store at -20°C. Stable for 12 months at -20°C.
解离常数 (K_D)	K _D = 2.31 x 10 ⁻¹¹ M



[Learn more about K_D](#)

存储溶液	pH: 7.2 Preservative: 0.05% Sodium azide Constituents: 0.1% BSA, 40% Glycerol (glycerin, glycerine), 9.85% Tris glycine, 50% Tissue culture supernatant
纯度	Protein A purified
克隆	单克隆
克隆编号	EPR5807
同种型	IgG

应用

The Abpromise guarantee **Abpromise™** 承诺保证使用 ab133445 于以下的经测试应用

“应用说明”部分 下显示的仅为推荐的起始稀释度;实际最佳的稀释度/浓度应由使用者检定。

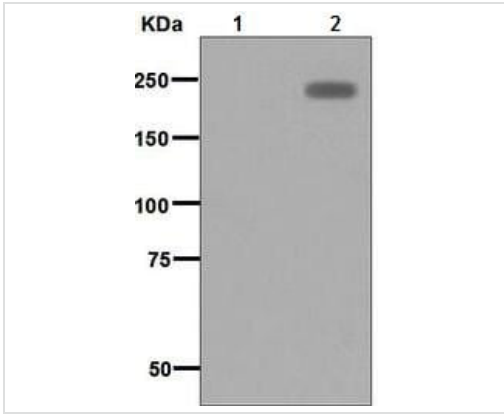
应用	Ab评论	说明
WB		1/1000 - 1/10000. Detects a band of approximately 185 kDa (predicted molecular weight: 148 kDa).

应用说明 Is unsuitable for Flow Cyt or IHC-P.

靶标

功能	Binds and is activated by neuregulins and NTAK.
组织特异性	Epithelial tissues and brain.
疾病相关	Defects in ERBB3 are the cause of lethal congenital contracture syndrome type 2 (LCCS2) [MIM:607598]; also called Israeli Bedouin multiple contracture syndrome type A. LCCS2 is an autosomal recessive neurogenic form of a neonatally lethal arthrogyriposis that is associated with atrophy of the anterior horn of the spinal cord. The LCCS2 syndrome is characterized by multiple joint contractures, anterior horn atrophy in the spinal cord, and a unique feature of a markedly distended urinary bladder. The phenotype suggests a spinal cord neuropathic etiology.
序列相似性	Belongs to the protein kinase superfamily. Tyr protein kinase family. EGF receptor subfamily. Contains 1 protein kinase domain.
发展阶段	Overexpressed in a subset of human mammary tumors.
结构域	The cytoplasmic part of the receptor may interact with the SH2 or SH3 domains of many signal-transducing proteins.
翻译后修饰	Ligand-binding increases phosphorylation on tyrosine residues and promotes its association with the p85 subunit of phosphatidylinositol 3-kinase.
细胞定位	Secreted and Cell membrane.

图片



Western blot - Anti-ErbB3 / HER3 (phospho Y1222) antibody [EPR5807] (ab133445)

All lanes : Anti-ErbB3 / HER3 (phospho Y1222) antibody [EPR5807] (ab133445) at 1/1000 dilution

Lane 1 : SKBR3 cell lysate

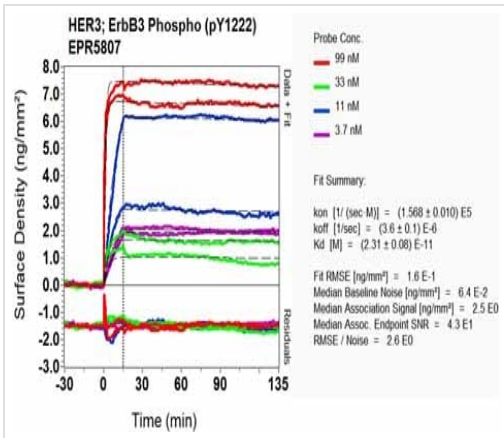
Lane 2 : Lysate of SKBR3 cells treated with neuregulin.

Secondary

All lanes : Goat anti-rabbit HRP conjugated antibody at 1/2000 dilution

Predicted band size: 148 kDa

Observed band size: 185 kDa



OI-RD Scanning - Anti-ErbB3 / HER3 (phospho Y1222) antibody [EPR5807] (ab133445)

Equilibrium dissociation constant (K_D)

Learn more about K_D

[Click here to learn more about \$K_D\$](#)

Why choose a recombinant antibody?

Research with confidence
Consistent and reproducible results

Long-term and scalable supply
Recombinant technology

Success from the first experiment
Confirmed specificity

Ethical standards compliant
Animal-free production

Anti-ErbB3 / HER3 (phospho Y1222) antibody [EPR5807] (ab133445)

Please note: All products are "FOR RESEARCH USE ONLY. NOT FOR USE IN DIAGNOSTIC PROCEDURES"

Our Abpromise to you: Quality guaranteed and expert technical support

- Replacement or refund for products not performing as stated on the datasheet
- Valid for 12 months from date of delivery
- Response to your inquiry within 24 hours

- We provide support in Chinese, English, French, German, Japanese and Spanish
- Extensive multi-media technical resources to help you
- We investigate all quality concerns to ensure our products perform to the highest standards

If the product does not perform as described on this datasheet, we will offer a refund or replacement. For full details of the Abpromise, please visit <https://www.abcam.cn/abpromise> or contact our technical team.

Terms and conditions

- Guarantee only valid for products bought direct from Abcam or one of our authorized distributors