




Anti-ErbB3 / HER3 antibody - C-terminal ab190269

2 图像

概述

产品名称	Anti-ErbB3 / HER3抗体- C-terminal
描述	兔多克隆抗体to ErbB3 / HER3 - C-terminal
宿主	Rabbit
经测试应用	适用于: IP, WB
种属反应性	与反应: Human 预测可用于: Mouse, Rat, Rabbit, Horse, Guinea pig, Cow, Pig, Chimpanzee, Rhesus monkey, Chinese hamster, Orangutan 
免疫原	Synthetic peptide within Human ErbB3/ HER3 aa 1250 to the C-terminus (C terminal). The exact immunogen sequence used to generate this antibody is proprietary information. If additional detail on the immunogen is needed to determine the suitability of the antibody for your needs, please contact our Scientific Support team to discuss your requirements. NP_001973.2 Database link: P21860  Run BLAST with  Run BLAST with
阳性对照	Hela, 293T, Jurkat, MCF-7 whole cell lysates
常规说明	<p>The Life Science industry has been in the grips of a reproducibility crisis for a number of years. Abcam is leading the way in addressing this with our range of recombinant monoclonal antibodies and knockout edited cell lines for gold-standard validation. Please check that this product meets your needs before purchasing.</p> <p>If you have any questions, special requirements or concerns, please send us an inquiry and/or contact our Support team ahead of purchase. Recommended alternatives for this product can be found below, along with publications, customer reviews and Q&As</p>

性能

形式	Liquid
存放说明	Shipped at 4°C. Store at +4°C short term (1-2 weeks). Upon delivery aliquot. Store at -20°C long term. Avoid freeze / thaw cycle.
存储溶液	pH: 7 Preservative: 0.09% Sodium azide Constituent: 99% Tris citrate/phosphate pH 7-8

纯度	Immunogen affinity purified
克隆	多克隆
同种型	IgG

应用

The Abpromise guarantee **Abpromise™**承诺保证使用ab190269于以下的经测试应用

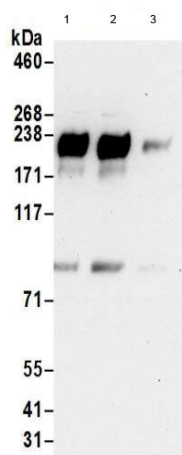
“应用说明”部分 下显示的仅为推荐的起始稀释度;实际最佳的稀释度/浓度应由使用者检定。

应用	Ab评论	说明
IP		Use at 2-10 µg/mg of lysate.
WB		1/1000 - 1/5000. Predicted molecular weight: 148 kDa.

靶标

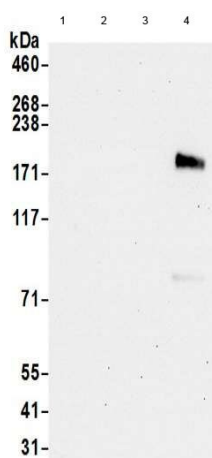
功能	Binds and is activated by neuregulins and NTAK.
组织特异性	Epithelial tissues and brain.
疾病相关	Defects in ERBB3 are the cause of lethal congenital contracture syndrome type 2 (LCCS2) [MIM:607598]; also called Israeli Bedouin multiple contracture syndrome type A. LCCS2 is an autosomal recessive neurogenic form of a neonatally lethal arthrogryposis that is associated with atrophy of the anterior horn of the spinal cord. The LCCS2 syndrome is characterized by multiple joint contractures, anterior horn atrophy in the spinal cord, and a unique feature of a markedly distended urinary bladder. The phenotype suggests a spinal cord neuropathic etiology.
序列相似性	Belongs to the protein kinase superfamily. Tyr protein kinase family. EGF receptor subfamily. Contains 1 protein kinase domain.
发展阶段	Overexpressed in a subset of human mammary tumors.
结构域	The cytoplasmic part of the receptor may interact with the SH2 or SH3 domains of many signal-transducing proteins.
翻译后修饰	Ligand-binding increases phosphorylation on tyrosine residues and promotes its association with the p85 subunit of phosphatidylinositol 3-kinase.
细胞定位	Secreted and Cell membrane.

图片



Immunoprecipitation - Anti-ErbB3 / HER3 antibody - C-terminal (ab190269)

Immunoprecipitation of MCF-7 cell lysate (0.5-1 mg per IP reaction; 20% of IP loaded) labeling ErbB3 / HER3 with ab190269 at 1 µg/ml by Western blotting. Samples were immunoprecipitated using a control antibody (1), ab190269 at 6 µg per reaction (2), or control IgG (3)



Western blot - Anti-ErbB3 / HER3 antibody - C-terminal (ab190269)

All lanes : Anti-ErbB3 / HER3 antibody - C-terminal (ab190269) at 0.4 µg/ml

Lane 1 : Hela whole cell lysate

Lane 2 : 293T whole cell lysate

Lane 3 : Jurkat whole cell lysate

Lane 4 : MCF-7 whole cell lysate

Lysates/proteins at 50 µg per lane.

Developed using the ECL technique.

Predicted band size: 148 kDa

Exposure time: 30 seconds

Please note: All products are "FOR RESEARCH USE ONLY. NOT FOR USE IN DIAGNOSTIC PROCEDURES"

Our Abpromise to you: Quality guaranteed and expert technical support

- Replacement or refund for products not performing as stated on the datasheet
- Valid for 12 months from date of delivery
- Response to your inquiry within 24 hours
- We provide support in Chinese, English, French, German, Japanese and Spanish
- Extensive multi-media technical resources to help you
- We investigate all quality concerns to ensure our products perform to the highest standards

If the product does not perform as described on this datasheet, we will offer a refund or replacement. For full details of the Abpromise, please visit <https://www.abcam.cn/abpromise> or contact our technical team.

Terms and conditions

- Guarantee only valid for products bought direct from Abcam or one of our authorized distributors