

Anti-ErbB2 / HER2 antibody [CB11] ab8054

26 References **1 图像**

概述

产品名称	Anti-ErbB2 / HER2抗体[CB11]
描述	小鼠单克隆抗体[CB11] to ErbB2 / HER2
宿主	Mouse
经测试应用	适用于: IHC-P
种属反应性	与反应: Human
免疫原	Synthetic peptide corresponding to ErbB2/ HER2.
阳性对照	Adenocarcinoma of the breast
常规说明	<p>C-erbB-2 oncogene codes for a membrane protein, Neu protein. In several studies the amplification of C-erbB-2 oncogene in carcinomas has been reported. Overexpression of the Neu oncogene protein can be demonstrated by this antibody.</p> <p>The Life Science industry has been in the grips of a reproducibility crisis for a number of years. Abcam is leading the way in addressing this with our range of recombinant monoclonal antibodies and knockout edited cell lines for gold-standard validation. Please check that this product meets your needs before purchasing.</p> <p>If you have any questions, special requirements or concerns, please send us an inquiry and/or contact our Support team ahead of purchase. Recommended alternatives for this product can be found below, along with publications, customer reviews and Q&As</p>

性能

形式	Liquid
存放说明	Shipped at 4°C. Store at +4°C short term (1-2 weeks). Upon delivery aliquot. Store at -20°C or -80°C. Avoid freeze / thaw cycle.
存储溶液	pH: 7.3 Preservative: 0.1% Sodium azide
纯度	Tissue culture supernatant
Primary antibody说明	C-erbB-2 oncogene codes for a membrane protein, Neu protein. In several studies the amplification of C-erbB-2 oncogene in carcinomas has been reported. Overexpression of the Neu oncogene protein can be demonstrated by this antibody.
克隆	单克隆

克隆编号	CB11
骨髓瘤	unknown
同种型	IgG1
轻链类型	unknown

应用

The Abpromise guarantee **Abpromise™**承诺保证使用ab8054于以下的经测试应用

“应用说明”部分 下显示的仅为推荐的起始稀释度 ;实际最佳的稀释度/浓度应由使用者检定。

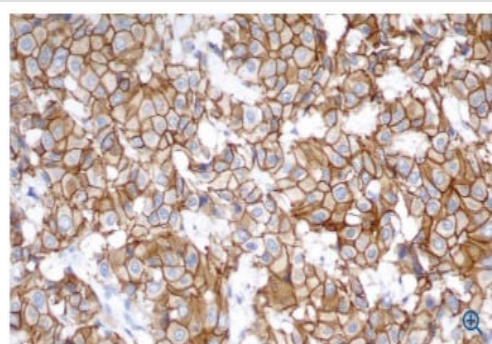
应用	Ab评论	说明
IHC-P		Use at an assay dependent concentration.

靶标

功能	<p>Protein tyrosine kinase that is part of several cell surface receptor complexes, but that apparently needs a coreceptor for ligand binding. Essential component of a neuregulin-receptor complex, although neuregulins do not interact with it alone. GP30 is a potential ligand for this receptor. Regulates outgrowth and stabilization of peripheral microtubules (MTs). Upon ERBB2 activation, the MEMO1-RHOA-DIAPH1 signaling pathway elicits the phosphorylation and thus the inhibition of GSK3B at cell membrane. This prevents the phosphorylation of APC and CLASP2, allowing its association with the cell membrane. In turn, membrane-bound APC allows the localization of MACF1 to the cell membrane, which is required for microtubule capture and stabilization. In the nucleus is involved in transcriptional regulation. Associates with the 5'-TCAAATTC-3' sequence in the PTGS2/COX-2 promoter and activates its transcription. Implicated in transcriptional activation of CDKN1A; the function involves STAT3 and SRC. Involved in the transcription of rRNA genes by RNA Pol I and enhances protein synthesis and cell growth.</p>
组织特异性	<p>Expressed in a variety of tumor tissues including primary breast tumors and tumors from small bowel, esophagus, kidney and mouth.</p>
疾病相关	<p>Hereditary diffuse gastric cancer Glioma Ovarian cancer Lung cancer Gastric cancer</p> <p>Chromosomal aberrations involving ERBB2 may be a cause gastric cancer. Deletions within 17q12 region producing fusion transcripts with CDK12, leading to CDK12-ERBB2 fusion leading to truncated CDK12 protein not in-frame with ERBB2.</p>
序列相似性	<p>Belongs to the protein kinase superfamily. Tyr protein kinase family. EGF receptor subfamily. Contains 1 protein kinase domain.</p>
翻译后修饰	<p>Autophosphorylated. Autophosphorylation occurs in trans, i.e. one subunit of the dimeric receptor phosphorylates tyrosine residues on the other subunit (Probable). Ligand-binding increases phosphorylation on tyrosine residues (PubMed:27134172). Signaling via SEMA4C promotes phosphorylation at Tyr-1248 (PubMed:17554007). Dephosphorylated by PTPN12 (PubMed:27134172).</p>
细胞定位	<p>Cytoplasm. Nucleus and Cell membrane. Cytoplasm, perinuclear region. Nucleus. Translocation</p>

to the nucleus requires endocytosis, probably endosomal sorting and is mediated by importin beta-1/KPNB1.

图片



ab8054 labelling ErbB2 / HER2 in human breast; invasive ductal carcinoma.

Immunohistochemistry (Formalin/PFA-fixed paraffin-embedded sections) - Anti-ErbB2 / HER2 antibody [CB11] (ab8054)

Please note: All products are "FOR RESEARCH USE ONLY. NOT FOR USE IN DIAGNOSTIC PROCEDURES"

Our Abpromise to you: Quality guaranteed and expert technical support

- Replacement or refund for products not performing as stated on the datasheet
- Valid for 12 months from date of delivery
- Response to your inquiry within 24 hours
- We provide support in Chinese, English, French, German, Japanese and Spanish
- Extensive multi-media technical resources to help you
- We investigate all quality concerns to ensure our products perform to the highest standards

If the product does not perform as described on this datasheet, we will offer a refund or replacement. For full details of the Abpromise, please visit <https://www.abcam.cn/abpromise> or contact our technical team.

Terms and conditions

- Guarantee only valid for products bought direct from Abcam or one of our authorized distributors