

Anti-EPS15R antibody [EP1147Y] ab53006

RabMAb[®]

5 References **2 图像**

概述

| | |
|-------|---|
| 产品名称 | Anti-EPS15R抗体[EP1147Y] |
| 描述 | 兔单克隆抗体[EP1147Y] to EPS15R |
| 宿主 | Rabbit |
| 经测试应用 | 适用于: WB, IHC-P |
| 种属反应性 | 与反应: Human |
| 免疫原 | Synthetic peptide. This information is proprietary to Abcam and/or its suppliers. |
| 阳性对照 | WB: HeLa cell lysate. IHC-P: Human breast carcinoma tissue. |
| 常规说明 | <p>Our RabMAb[®] technology is a patented hybridoma-based technology for making rabbit monoclonal antibodies. For details on our patents, please refer to RabMAb[®] patents.</p> <p>The Life Science industry has been in the grips of a reproducibility crisis for a number of years. Abcam is leading the way in addressing this with our range of recombinant monoclonal antibodies and knockout edited cell lines for gold-standard validation. Please check that this product meets your needs before purchasing.</p> <p>If you have any questions, special requirements or concerns, please send us an inquiry and/or contact our Support team ahead of purchase. Recommended alternatives for this product can be found below, along with publications, customer reviews and Q&As</p> <p>Mouse, Rat: We have preliminary internal testing data to indicate this antibody may not react with these species. Please contact us for more information.</p> |

性能

| | |
|------|---|
| 形式 | Liquid |
| 存放说明 | Shipped at 4°C. Store at -20°C. Stable for 12 months at -20°C. |
| 存储溶液 | <p>pH: 7.20</p> <p>Preservative: 0.05% Sodium azide</p> <p>Constituents: 0.1% BSA, 40% Glycerol (glycerin, glycerine), 9.85% Tris glycine, 50% Tissue culture supernatant</p> |
| 纯度 | Tissue culture supernatant |
| 克隆 | 单克隆 |

克隆编号 EP1147Y

同种型 IgG

应用

The Abpromise guarantee **Abpromise™**承诺保证使用ab53006于以下的经测试应用

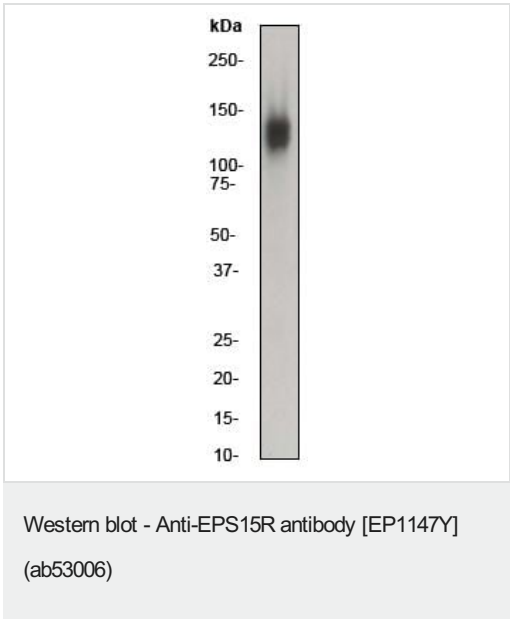
“应用说明”部分 下显示的仅为推荐的起始稀释度;实际最佳的稀释度/浓度应由使用者检定。

| 应用 | Ab评论 | 说明 |
|-------|------|---|
| WB | | 1/50000. Detects a band of approximately 125 kDa (predicted molecular weight: 94 kDa). |
| IHC-P | | Use at an assay dependent concentration. Perform heat mediated antigen retrieval with citrate buffer pH 6 before commencing with IHC staining protocol. |

靶标

| | |
|-------|--|
| 功能 | Seems to be a constitutive component of clathrin-coated pits that is required for receptor-mediated endocytosis. Involved in endocytosis of integrin beta-1 (ITGB1) and transferrin receptor (TFR); internalization of ITGB1 as DAB2-dependent cargo but not TFR seems to require association with DAB2. |
| 序列相似性 | Contains 1 EF-hand domain. Contains 3 EH domains. |
| 翻译后修饰 | Phosphorylated on tyrosine residues by EGFR. |
| 细胞定位 | Cell membrane. Nucleus. Membrane > coated pit. Localized to plasma membrane coated pits. |

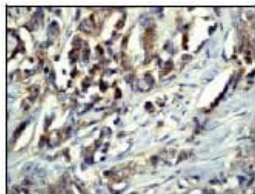
图片



Anti-EPS15R antibody [EP1147Y] (ab53006) at 1/50000 dilution + HeLa cell lysate at 10 µg

Secondary
goat anti-rabbit HRP labelled at 1/2000 dilution

Predicted band size: 94 kDa
Observed band size: 125 kDa



Immunohistochemistry (Formalin/PFA-fixed paraffin-embedded sections) - Anti-EPS15R antibody [EP1147Y] (ab53006)

ab53006, at a 1/50 dilution, staining EPS15R in human breast carcinoma, using Immunohistochemistry, Paraffin embedded tissue.

Perform heat mediated antigen retrieval with citrate buffer pH 6 before commencing with IHC staining protocol.

Please note: All products are "FOR RESEARCH USE ONLY. NOT FOR USE IN DIAGNOSTIC PROCEDURES"

Our Abpromise to you: Quality guaranteed and expert technical support

- Replacement or refund for products not performing as stated on the datasheet
- Valid for 12 months from date of delivery
- Response to your inquiry within 24 hours
- We provide support in Chinese, English, French, German, Japanese and Spanish
- Extensive multi-media technical resources to help you
- We investigate all quality concerns to ensure our products perform to the highest standards

If the product does not perform as described on this datasheet, we will offer a refund or replacement. For full details of the Abpromise, please visit <https://www.abcam.cn/abpromise> or contact our technical team.

Terms and conditions

- Guarantee only valid for products bought direct from Abcam or one of our authorized distributors