


Anti-EPS15R antibody [EP1146Y] ab76004

重组 RabMAb

3 References **2 图像**

概述

产品名称	Anti-EPS15R抗体[EP1146Y]
描述	兔单克隆抗体[EP1146Y] to EPS15R
宿主	Rabbit
经测试应用	适用于: WB 不适用于: Flow Cyt, ICC/IF, IHC-P or IP
种属反应性	与反应: Human 预测可用于: Mouse, Rat 
免疫原	Synthetic peptide within Human EPS15R aa 1-100 (N terminal). The exact sequence is proprietary. Database link: Q9UBC2
阳性对照	HeLa, 293T and SHSY5Y cell lysates; A431 cells.
常规说明	This product is a recombinant monoclonal antibody, which offers several advantages including: <ul style="list-style-type: none"> - High batch-to-batch consistency and reproducibility - Improved sensitivity and specificity - Long-term security of supply - Animal-free production For more information see here . Our RabMAb [®] technology is a patented hybridoma-based technology for making rabbit monoclonal antibodies. For details on our patents, please refer to RabMAb[®] patents .

性能

形式	Liquid
存放说明	Shipped at 4°C. Upon delivery aliquot and store at -20°C. Avoid freeze / thaw cycles.
存储溶液	pH: 7.20 Preservative: 0.05% Sodium azide Constituents: 0.1% BSA, 40% Glycerol (glycerin, glycerine), 9.85% Tris glycine, 50% Tissue culture supernatant
纯度	Protein A purified
克隆	单克隆

克隆编号 EP1146Y

同种型 IgG

应用

The Abpromise guarantee **Abpromise™** 承诺保证使用ab76004于以下的经测试应用

“应用说明”部分 下显示的仅为推荐的起始稀释度;实际最佳的稀释度/浓度应由使用者检定。

应用	Ab评论	说明
WB		1/10000 - 1/20000. Predicted molecular weight: 94 kDa.

应用说明 Is unsuitable for Flow Cyt, ICC/IF, IHC-P or IP.

靶标

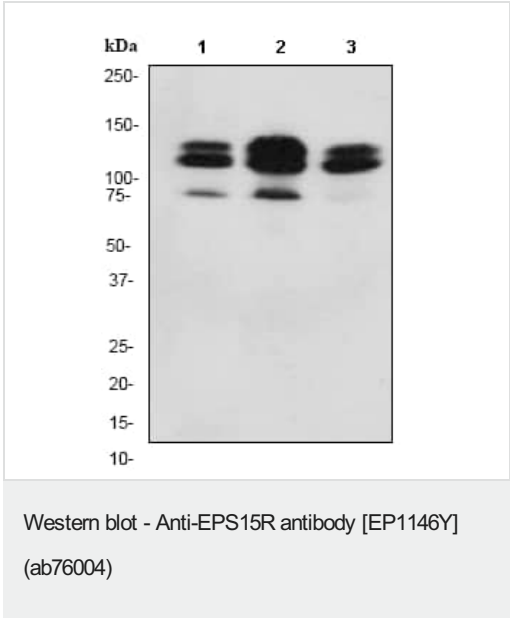
功能 Seems to be a constitutive component of clathrin-coated pits that is required for receptor-mediated endocytosis. Involved in endocytosis of integrin beta-1 (ITGB1) and transferrin receptor (TFR); internalization of ITGB1 as DAB2-dependent cargo but not TFR seems to require association with DAB2.

序列相似性 Contains 1 EF-hand domain.
Contains 3 EH domains.

翻译后修饰 Phosphorylated on tyrosine residues by EGFR.

细胞定位 Cell membrane. Nucleus. Membrane > coated pit. Localized to plasma membrane coated pits.

图片



All lanes : Anti-EPS15R antibody [EP1146Y] (ab76004) at 1/20000 dilution

Lane 1 : HeLa cell lysates
Lane 2 : 293T cell lysates
Lane 3 : SHSY5Y cell lysates





Lysates/proteins at 10 µg per lane.

Secondary
All lanes : goat anti-rabbit HRP at 1/2000 dilution

Predicted band size: 94 kDa
Observed band size: 108,125,76 kDa

There are three isoforms with MW at 125, 108 and 76 kDa respectively.

Why choose a recombinant antibody?

 <p>Research with confidence Consistent and reproducible results</p>	 <p>Long-term and scalable supply Recombinant technology</p>
 <p>Success from the first experiment Confirmed specificity</p>	 <p>Ethical standards compliant Animal-free production</p>

Anti-EPS15R antibody [EP1146Y] (ab76004)

Please note: All products are "FOR RESEARCH USE ONLY. NOT FOR USE IN DIAGNOSTIC PROCEDURES"

Our Abpromise to you: Quality guaranteed and expert technical support

- Replacement or refund for products not performing as stated on the datasheet
- Valid for 12 months from date of delivery
- Response to your inquiry within 24 hours
- We provide support in Chinese, English, French, German, Japanese and Spanish
- Extensive multi-media technical resources to help you
- We investigate all quality concerns to ensure our products perform to the highest standards

If the product does not perform as described on this datasheet, we will offer a refund or replacement. For full details of the Abpromise, please visit <https://www.abcam.cn/abpromise> or contact our technical team.

Terms and conditions

- Guarantee only valid for products bought direct from Abcam or one of our authorized distributors