

# Anti-Epiphycan antibody ab122449

## 1 图像

### 概述

产品名称	Anti-Epiphycan抗体
描述	兔多克隆抗体to Epiphycan
宿主	Rabbit
经测试应用	适用于: IHC-P
种属反应性	与反应: Human 预测可用于: Mouse, Rat 
免疫原	Recombinant fragment: LRDNKIRQLP ELPTTLTFID ISNNRLGRKG IKQEAFKDMY DLHHLTLTDN NLDHIPLPLP ENLRALHLQN NNILEMHEDT FCNV, corresponding to amino acids 198-281 of Human Epiphycan. <a href="#">Run BLAST with ExPASy</a> <a href="#">Run BLAST with NCBI</a>
阳性对照	Human testis tissue
常规说明	<p>The Life Science industry has been in the grips of a reproducibility crisis for a number of years. Abcam is leading the way in addressing this with our range of recombinant monoclonal antibodies and knockout edited cell lines for gold-standard validation. Please check that this product meets your needs before purchasing.</p> <p>If you have any questions, special requirements or concerns, please send us an inquiry and/or contact our Support team ahead of purchase. Recommended alternatives for this product can be found below, along with publications, customer reviews and Q&amp;As</p>

### 性能

形式	Liquid
存放说明	Shipped at 4°C. Store at -20°C.
存储溶液	pH: 7.20 Preservative: 0.02% Sodium azide Constituents: 59% PBS, 40% Glycerol (glycerin, glycerine)
纯度	Immunogen affinity purified
克隆	多克隆
同种型	IgG

## 应用

**The Abpromise guarantee**      **Abpromise™**承诺保证使用ab122449于以下的经测试应用

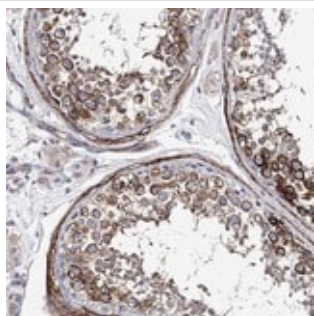
“应用说明”部分 下显示的仅为推荐的起始稀释度;实际最佳的稀释度/浓度应由使用者检定。

应用	Ab评论	说明
IHC-P		1/200 - 1/500. Perform heat mediated antigen retrieval with citrate buffer pH 6 before commencing with IHC staining protocol.

## 靶标

<b>功能</b>	May have a role in bone formation and also in establishing the ordered structure of cartilage through matrix organization.
<b>组织特异性</b>	Cartilage, ligament, and placenta.
<b>序列相似性</b>	Belongs to the small leucine-rich proteoglycan (SLRP) family. SLRP class III subfamily. Contains 6 LRR (leucine-rich) repeats. Contains 1 LRRNT domain.
<b>翻译后修饰</b>	The O-linked polysaccharides on Thr-60 and Ser-96 are probably the mucin type linked to GalNAc. There is one glycosaminoglycan chain, known to be dermatan sulfate, and it is probably the O-glycosylation at Ser-64.
<b>细胞定位</b>	Secreted > extracellular space > extracellular matrix.

## 图片



ab122449, at 1/200, staining Epiphycan by in paraffin-embedded Human testis tissue by Immunohistochemistry.

Immunohistochemistry (Formalin/PFA-fixed paraffin-embedded sections) - Anti-Epiphycan antibody (ab122449)

**Please note:** All products are "FOR RESEARCH USE ONLY. NOT FOR USE IN DIAGNOSTIC PROCEDURES"

## Our Abpromise to you: Quality guaranteed and expert technical support

- Replacement or refund for products not performing as stated on the datasheet
- Valid for 12 months from date of delivery

- Response to your inquiry within 24 hours
- We provide support in Chinese, English, French, German, Japanese and Spanish
- Extensive multi-media technical resources to help you
- We investigate all quality concerns to ensure our products perform to the highest standards

If the product does not perform as described on this datasheet, we will offer a refund or replacement. For full details of the Abpromise, please visit <https://www.abcam.cn/abpromise> or contact our technical team.

### **Terms and conditions**

---

- Guarantee only valid for products bought direct from Abcam or one of our authorized distributors