

# Anti-Epigen antibody ab198913

## 1 图像

### 概述

产品名称	Anti-Epigen抗体
描述	兔多克隆抗体to Epigen
宿主	Rabbit
经测试应用	适用于: WB
种属反应性	与反应: Human
免疫原	Synthetic peptide corresponding to Human Epigen (internal sequence). NP_001257918. Database link: <a href="#">Q6UW88</a>
阳性对照	Jurkat, HeLa and 293T cell lysate.
常规说明	<p>The Life Science industry has been in the grips of a reproducibility crisis for a number of years. Abcam is leading the way in addressing this with our range of recombinant monoclonal antibodies and knockout edited cell lines for gold-standard validation. Please check that this product meets your needs before purchasing.</p> <p>If you have any questions, special requirements or concerns, please send us an inquiry and/or contact our Support team ahead of purchase. Recommended alternatives for this product can be found below, along with publications, customer reviews and Q&amp;As</p>

### 性能

形式	Liquid
存放说明	Shipped at 4°C. Store at +4°C short term (1-2 weeks). Upon delivery aliquot. Store at -20°C long term. Avoid freeze / thaw cycle.
存储溶液	pH: 7.4 Preservative: 0.05% Sodium azide Constituents: 50% Glycerol (glycerin, glycerine), 49% PBS
纯度	Immunogen affinity purified
克隆	多克隆
同种型	IgG

### 应用

## The Abpromise guarantee

**Abpromise™** 承诺保证使用ab198913于以下的经测试应用

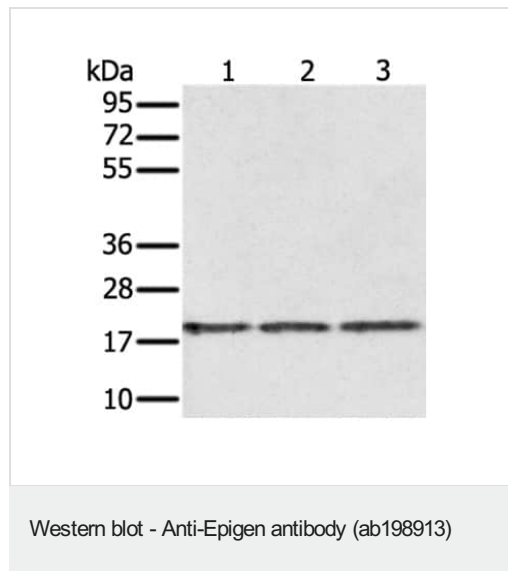
“应用说明”部分 下显示的仅为推荐的起始稀释度;实际最佳的稀释度/浓度应由使用者检定。

应用	Ab评论	说明
WB		1/200 - 1/1000. Predicted molecular weight: 17 kDa.

## 靶标

功能	Promotes the growth of epithelial cells. May stimulate the phosphorylation of EGFR and mitogen-activated protein kinases.
序列相似性	Contains 1 EGF-like domain.
细胞定位	Secreted and Membrane.

## 图片



**All lanes :** Anti-Epigen antibody (ab198913) at 1/150 dilution

**Lane 1 :** Jurkat cell lysate

**Lane 2 :** 293T cell lysate

**Lane 3 :** HeLa cell lysate

Lysates/proteins at 40 µg per lane.

Developed using the ECL technique.

**Predicted band size:** 17 kDa

**Exposure time:** 1 minute

12% SDS-PAGE

**Please note:** All products are "FOR RESEARCH USE ONLY. NOT FOR USE IN DIAGNOSTIC PROCEDURES"

## Our Abpromise to you: Quality guaranteed and expert technical support

- Replacement or refund for products not performing as stated on the datasheet
- Valid for 12 months from date of delivery
- Response to your inquiry within 24 hours
- We provide support in Chinese, English, French, German, Japanese and Spanish

- Extensive multi-media technical resources to help you
- We investigate all quality concerns to ensure our products perform to the highest standards

If the product does not perform as described on this datasheet, we will offer a refund or replacement. For full details of the Abpromise, please visit <https://www.abcam.cn/abpromise> or contact our technical team.

#### **Terms and conditions**

---

- Guarantee only valid for products bought direct from Abcam or one of our authorized distributors