


Anti-Ephrin B2 (phospho Y316) antibody ab119323

[3 References](#) [1 图像](#)

概述

产品名称	Anti-Ephrin B2 (phospho Y316)抗体
描述	兔多克隆抗体to Ephrin B2 (phospho Y316)
宿主	Rabbit
特异性	ab119323 recognizes endogenous Ephrin B2 only when phosphorylated at Tyrosine 316. May also react with Ephrin B1 and B3 as the immunogen sequence is also present in these proteins if phosphorylated.
经测试应用	适用于: WB
种属反应性	与反应: Human 预测可用于: Rat 
免疫原	Synthetic peptide corresponding to Human Ephrin B2 aa 300-400 (phospho Y316) conjugated to keyhole limpet haemocyanin. Database link: P52799 Run BLAST with Run BLAST with
阳性对照	HT29 cell lysate
常规说明	The Life Science industry has been in the grips of a reproducibility crisis for a number of years. Abcam is leading the way in addressing this with our range of recombinant monoclonal antibodies and knockout edited cell lines for gold-standard validation. Please check that this product meets your needs before purchasing. If you have any questions, special requirements or concerns, please send us an inquiry and/or contact our Support team ahead of purchase. Recommended alternatives for this product can be found below, along with publications, customer reviews and Q&As

性能

形式	Liquid
存放说明	Shipped at 4°C. Store at -20°C. Stable for 12 months at -20°C.
存储溶液	pH: 7.40 Preservative: 0.02% Sodium azide Constituents: 49% PBS, 0.88% Sodium chloride, 50% Glycerol (glycerin, glycerine) PBS without Mg2+ and Ca2+

纯度	Immunogen affinity purified
克隆	多克隆
同种型	IgG

应用

The Abpromise guarantee **Abpromise™**承诺保证使用ab119323于以下的经测试应用

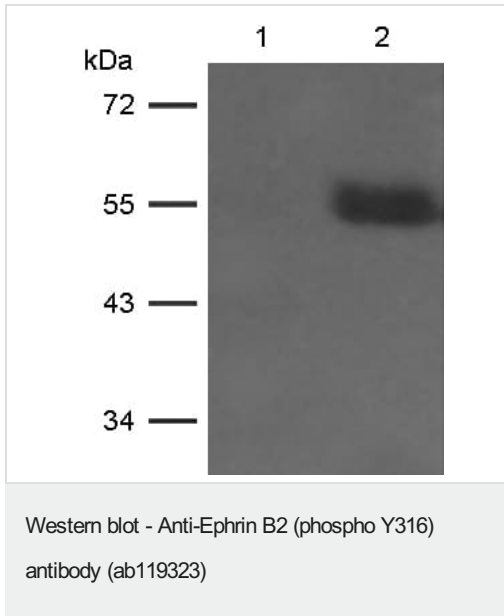
“应用说明”部分下显示的仅为推荐的起始稀释度;实际最佳的稀释度/浓度应由使用者检定。

应用	Ab评论	说明
WB		1/500 - 1/1000. Predicted molecular weight: 37 kDa.

靶标

功能	Cell surface transmembrane ligand for Eph receptors, a family of receptor tyrosine kinases which are crucial for migration, repulsion and adhesion during neuronal, vascular and epithelial development. Binds promiscuously Eph receptors residing on adjacent cells, leading to contact-dependent bidirectional signaling into neighboring cells. The signaling pathway downstream of the receptor is referred to as forward signaling while the signaling pathway downstream of the ephrin ligand is referred to as reverse signaling. Binds to receptor tyrosine kinase including EPHA4, EPHA3 and EPHB4. Together with EPHB4 plays a central role in heart morphogenesis and angiogenesis through regulation of cell adhesion and cell migration. EPHB4-mediated forward signaling controls cellular repulsion and segregation from EFNB2-expressing cells. May play a role in constraining the orientation of longitudinally projecting axons. (Microbial infection) Acts as a receptor for Hendra virus and Nipah virus.
组织特异性	Lung and kidney.
序列相似性	Belongs to the ephrin family. Contains 1 ephrin RBD (ephrin receptor-binding) domain.
翻译后修饰	Inducible phosphorylation of tyrosine residues in the cytoplasmic domain.
细胞定位	Membrane.

图片



All lanes : Anti-Ephrin B2 (phospho Y316) antibody (ab119323) at 1/500 dilution

Lane 1 : HT29 cell lysate

Lane 2 : HT29 cells, treated with UV and lysed

Predicted band size: 37 kDa

Please note: All products are "FOR RESEARCH USE ONLY. NOT FOR USE IN DIAGNOSTIC PROCEDURES"

Our Abpromise to you: Quality guaranteed and expert technical support

- Replacement or refund for products not performing as stated on the datasheet
- Valid for 12 months from date of delivery
- Response to your inquiry within 24 hours
- We provide support in Chinese, English, French, German, Japanese and Spanish
- Extensive multi-media technical resources to help you
- We investigate all quality concerns to ensure our products perform to the highest standards

If the product does not perform as described on this datasheet, we will offer a refund or replacement. For full details of the Abpromise, please visit <https://www.abcam.cn/abpromise> or contact our technical team.

Terms and conditions

- Guarantee only valid for products bought direct from Abcam or one of our authorized distributors