

Anti-Ephrin A1 antibody [EPR1785(2)] ab124911

重组 RabMAb

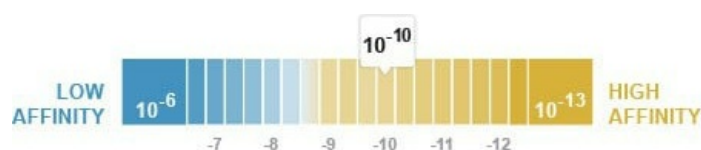
4 References 3 图像

概述

产品名称	Anti-Ephrin A1抗体[EPR1785(2)]
描述	兔单克隆抗体[EPR1785(2)] to Ephrin A1
宿主	Rabbit
经测试应用	适用于: WB 不适用于: Flow Cyt, ICC/IF, IHC-P or IP
种属反应性	与反应: Human 不与反应: Mouse, Rat
免疫原	Synthetic peptide within Human Ephrin A1 aa 1-100 (N terminal). The exact sequence is proprietary.
阳性对照	HUVEC (treated with TNF alpha), HUVEC (untreated) and MCF7 cell lysates.
常规说明	This product is a recombinant monoclonal antibody, which offers several advantages including: <ul style="list-style-type: none"> - High batch-to-batch consistency and reproducibility - Improved sensitivity and specificity - Long-term security of supply - Animal-free production For more information see here . Our RabMAb [®] technology is a patented hybridoma-based technology for making rabbit monoclonal antibodies. For details on our patents, please refer to RabMAb[®] patents .

性能

形式	Liquid
存放说明	Shipped at 4°C. Store at -20°C. Stable for 12 months at -20°C.
解离常数 (K _D)	K _D = 1.59 x 10 ⁻¹⁰ M



[Learn more about K_D](#)

存储溶液	pH: 7.20
------	----------

纯度	Protein A purified
克隆	单克隆
克隆编号	EPR1785(2)
同种型	IgG

The Abpromise guarantee

“应用说明”部分 下显示的仅为推荐的起始稀释度;实际最佳的稀释度/浓度应由使用者检定。

应用说明 Is unsuitable for Flow Cyt, ICC/IF, IHC-P or IP.

功能

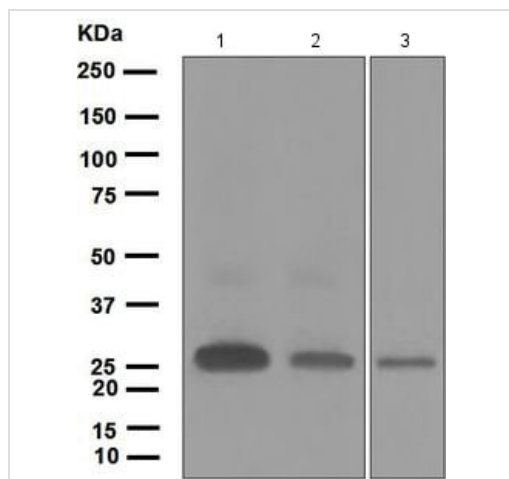
组织特异性	Brain. Down-regulated in primary glioma tissues compared to the normal tissues. The soluble monomeric form is expressed in the glioblastoma multiforme (GBM) and breast cancer cells (at protein level).
--------------	--

序列相似性 Belongs to the ephrin family.

翻译后修饰 Undergo proteolysis by a metalloprotease to give rise to a soluble monomeric form.

细胞定位 Secreted and Cell membrane.

2



Western blot - Anti-Ephrin A1 antibody
[EPR1785(2)] (ab124911)

All lanes : Anti-Ephrin A1 antibody [EPR1785(2)] (ab124911) at 1/1000 dilution

Lane 1 : HUVEC cell lysate, treated with TNF alpha

Lane 2 : HUVEC cell lysate

Lane 3 : MCF7 cell lysate

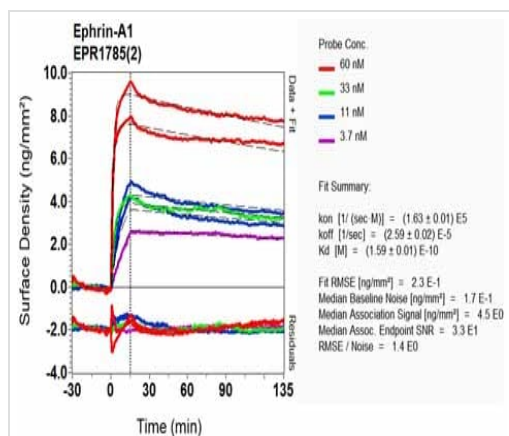
Lysates/proteins at 10 µg per lane.

Secondary

All lanes : Goat anti-Rabbit HRP at 1/2000 dilution

Predicted band size: 24 kDa

Observed band size: 24 kDa



BI-RD Scanning - Anti-Ephrin A1 antibody
[EPR1785(2)] (ab124911)

Equilibrium dissociation constant (K_D)

Learn more about K_D

[Click here to learn more about \$K_D\$](#)

Why choose a recombinant antibody?



Research with confidence
Consistent and reproducible results



Long-term and scalable supply
Recombinant technology



Success from the first experiment
Confirmed specificity



Ethical standards compliant
Animal-free production

Anti-Ephrin A1 antibody [EPR1785(2)] (ab124911)

Please note: All products are "FOR RESEARCH USE ONLY. NOT FOR USE IN DIAGNOSTIC PROCEDURES"

Our Abpromise to you: Quality guaranteed and expert technical support

- Replacement or refund for products not performing as stated on the datasheet
- Valid for 12 months from date of delivery
- Response to your inquiry within 24 hours
- We provide support in Chinese, English, French, German, Japanese and Spanish
- Extensive multi-media technical resources to help you
- We investigate all quality concerns to ensure our products perform to the highest standards

If the product does not perform as described on this datasheet, we will offer a refund or replacement. For full details of the Abpromise, please visit <https://www.abcam.cn/abpromise> or contact our technical team.

Terms and conditions

- Guarantee only valid for products bought direct from Abcam or one of our authorized distributors