

Anti-Eph receptor A6 antibody ab113239

3 图像

概述

产品名称	Anti-Eph receptor A6抗体
描述	兔多克隆抗体to Eph receptor A6
宿主	Rabbit
经测试应用	适用于: IHC-P, ICC/IF
种属反应性	与反应: Human, African green monkey 预测可用于: Mouse, Rat 
免疫原	Synthetic peptide conjugated to KLH, from the C terminal region of Human Eph receptor A6.
阳性对照	Human Brain cerebellum and Testis tissues; COS7 cells.
常规说明	<p>The Life Science industry has been in the grips of a reproducibility crisis for a number of years. Abcam is leading the way in addressing this with our range of recombinant monoclonal antibodies and knockout edited cell lines for gold-standard validation. Please check that this product meets your needs before purchasing.</p> <p>If you have any questions, special requirements or concerns, please send us an inquiry and/or contact our Support team ahead of purchase. Recommended alternatives for this product can be found below, along with publications, customer reviews and Q&As</p>

性能

形式	Liquid
存放说明	Shipped at 4°C. Store at -20°C. Stable for 12 months at -20°C.
存储溶液	pH: 7.40 Preservative: 0.02% Sodium azide Constituents: 49% PBS, 0.88% Sodium chloride, 50% Glycerol (glycerin, glycerine)
纯度	PBS contains no Mg ²⁺ or Ca ²⁺ Protein A purified
克隆	多克隆
同种型	IgG

应用

The Abpromise guarantee

Abpromise™ 承诺保证使用 ab113239 于以下的经测试应用

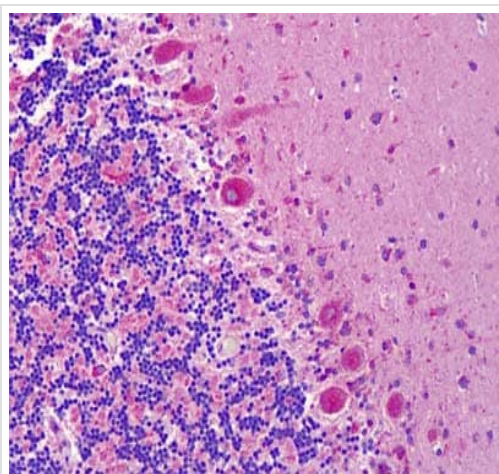
“应用说明”部分下显示的仅为推荐的起始稀释度；实际最佳的稀释度/浓度应由使用者检定。

应用	Ab评论	说明
IHC-P		Use a concentration of 10 µg/ml.
ICC/IF		1/100 - 1/500.

靶标

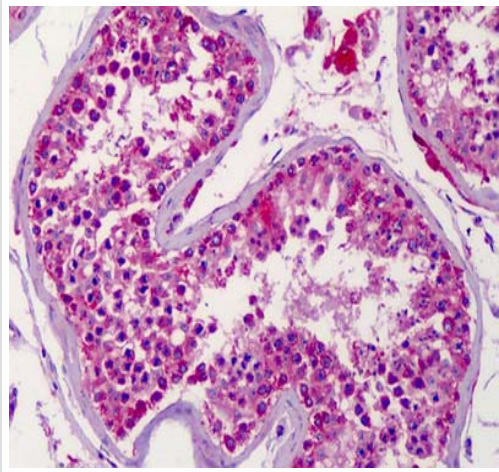
功能	Receptor for members of the ephrin-A family.
组织特异性	Expressed in brain and testis.
序列相似性	Belongs to the protein kinase superfamily. Tyr protein kinase family. Ephrin receptor subfamily. Contains 2 fibronectin type-III domains. Contains 1 protein kinase domain. Contains 1 SAM (sterile alpha motif) domain.
细胞定位	Membrane.

图片



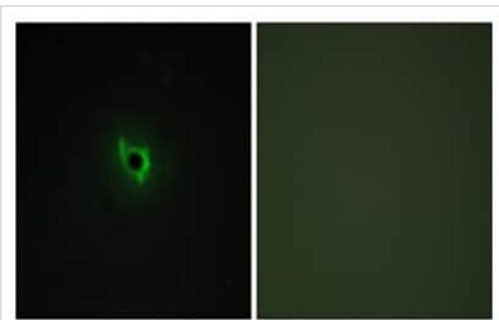
ab113239, at 10 µg/ml, staining Eph receptor A6 in Formalin-fixed, Paraffin-embedded Human Brain cerebellum tissue by Immunohistochemistry.

Immunohistochemistry (Formalin/PFA-fixed paraffin-embedded sections) - Anti-Eph receptor A6 antibody (ab113239)



ab113239, at 10 µg/ml, staining Eph receptor A6 in Formalin-fixed, Paraffin-embedded Human Testis tissue by Immunohistochemistry.

Immunohistochemistry (Formalin/PFA-fixed paraffin-embedded sections) - Anti-Eph receptor A6 antibody (ab113239)



ab113239, at 1/100 dilution, staining Eph receptor A6 in COS7 cells by Immunofluorescence. The image on the right has been treated with the synthesized peptide.

Immunocytochemistry/ Immunofluorescence - Anti-Eph receptor A6 antibody (ab113239)

Please note: All products are "FOR RESEARCH USE ONLY. NOT FOR USE IN DIAGNOSTIC PROCEDURES"

Our Abpromise to you: Quality guaranteed and expert technical support

- Replacement or refund for products not performing as stated on the datasheet
- Valid for 12 months from date of delivery
- Response to your inquiry within 24 hours
- We provide support in Chinese, English, French, German, Japanese and Spanish
- Extensive multi-media technical resources to help you

- We investigate all quality concerns to ensure our products perform to the highest standards

If the product does not perform as described on this datasheet, we will offer a refund or replacement. For full details of the Abpromise, please visit <https://www.abcam.cn/abpromise> or contact our technical team.

Terms and conditions

- Guarantee only valid for products bought direct from Abcam or one of our authorized distributors