


Anti-EPF antibody [EPR4476] ab108600

重组 RabMAb

★★★★★ 5 Abreviews 7 References 10 图像

概述

产品名称	Anti-EPF抗体[EPR4476]
描述	兔单克隆抗体[EPR4476] to EPF
宿主	Rabbit
经测试应用	适用于: WB, IHC-P, ICC/IF 不适用于: Flow Cyt
种属反应性	与反应: Mouse, Human 预测可用于: Rat 
免疫原	Synthetic peptide. This information is proprietary to Abcam and/or its suppliers.
阳性对照	WB: A431, Neuro-2a, A549, and MCF7 cell lysates IHC-P: Human colon and kidney tissues ICC/IF: HeLa cells
常规说明	<p>This product is a recombinant monoclonal antibody, which offers several advantages including:</p> <ul style="list-style-type: none"><li>- High batch-to-batch consistency and reproducibility</li><li>- Improved sensitivity and specificity</li><li>- Long-term security of supply</li><li>- Animal-free production</li></ul> <p>For more information <a href="#">see here</a>.</p> <p>Our RabMAb<sup>®</sup> technology is a patented hybridoma-based technology for making rabbit monoclonal antibodies. For details on our patents, please refer to <a href="#">RabMAb<sup>®</sup> patents</a>.</p>

性能

形式	Liquid
存放说明	Shipped at 4°C. Store at -20°C. Stable for 12 months at -20°C.
存储溶液	pH: 7.20 Preservative: 0.05% Sodium azide Constituents: 0.1% BSA, 40% Glycerol (glycerin, glycerine), 9.85% Tris glycine, 50% Tissue culture supernatant
纯度	Protein A purified
克隆	单克隆

克隆编号EPR4476

同种型IgG

应用

The Abpromise guarantee      **Abpromise™**承诺保证使用ab108600于以下的经测试应用

“应用说明”部分 下显示的仅为推荐的起始稀释度;实际最佳的稀释度/浓度应由使用者检定。

应用	Ab评论	说明
WB	★★★★★ (4)	1/10000 - 1/50000. Detects a band of approximately 11 kDa (predicted molecular weight: 11 kDa).
IHC-P		1/250 - 1/500. Perform heat mediated antigen retrieval with citrate buffer pH 6 before commencing with IHC staining protocol.
ICC/IF		1/100 - 1/250.

应用说明      Is unsuitable for Flow Cyt.

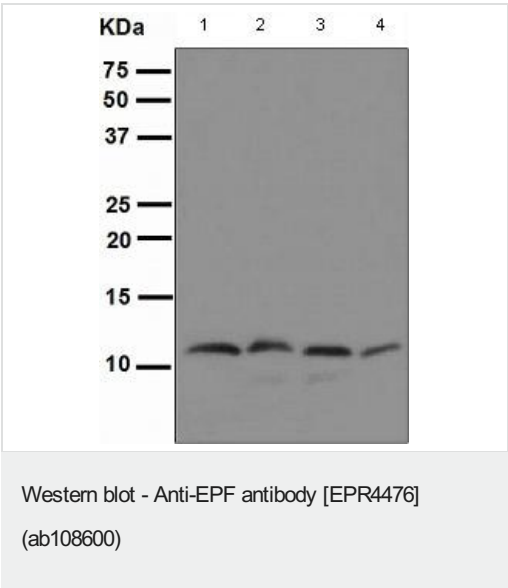
靶标

功能      Eukaryotic CPN10 homolog which is essential for mitochondrial protein biogenesis, together with CPN60. Binds to CPN60 in the presence of Mg-ATP and suppresses the ATPase activity of the latter.

序列相似性      Belongs to the GroES chaperonin family.

细胞定位      Mitochondrion matrix.

图片



**All lanes :** Anti-EPF antibody [EPR4476] (ab108600) at 1/10000 dilution

**Lane 1 :** A431 cell lysate

**Lane 2 :** Neuro-2a cell lysate

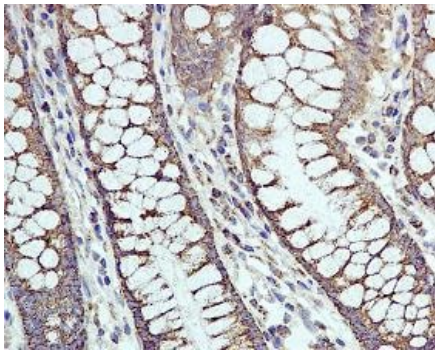
**Lane 3 :** A549 cell lysate

**Lane 4 :** MCF7 cell lysate

Lysates/proteins at 10 µg per lane.

**Predicted band size:** 11 kDa

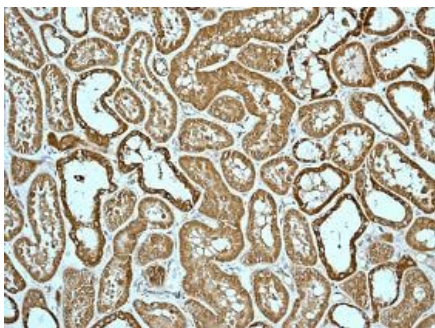
**Observed band size:** 11 kDa



Immunohistochemistry (Formalin/PFA-fixed paraffin-embedded sections) - Anti-EPF antibody [EPR4476] (ab108600)

Immunohistochemical staining of EPF in paraffin embedded Human colon tissue, using ab108600 at a dilution of 1/250.

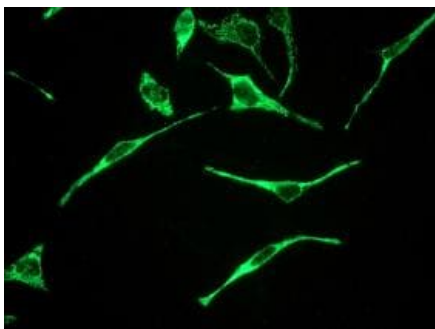
Perform heat mediated antigen retrieval with citrate buffer pH 6 before commencing with IHC staining protocol.



Immunohistochemistry (Formalin/PFA-fixed paraffin-embedded sections) - Anti-EPF antibody [EPR4476] (ab108600)

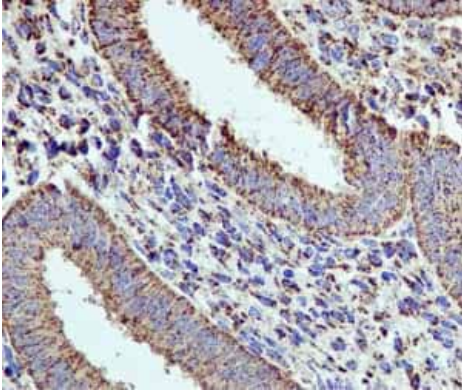
Immunohistochemical staining of EPF in paraffin embedded Human kidney tissue, using ab108600 at a dilution of 1/250.

Perform heat mediated antigen retrieval with citrate buffer pH 6 before commencing with IHC staining protocol.



Immunocytochemistry/ Immunofluorescence - Anti-EPF antibody [EPR4476] (ab108600)

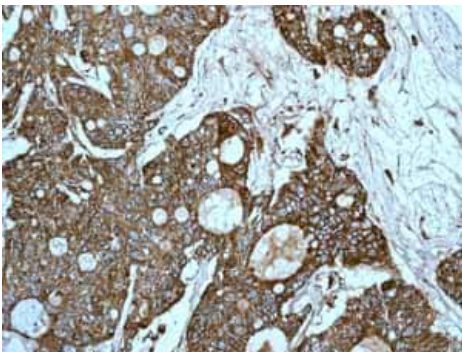
Immunofluorescent staining of EPF in HeLa cells, using ab108600 at a dilution of 1/100.



Immunohistochemistry (Formalin/PFA-fixed paraffin-embedded sections) - Anti-EPF antibody [EPR4476] (ab108600)

ab108600 showing positive staining in Normal uterus tissue.

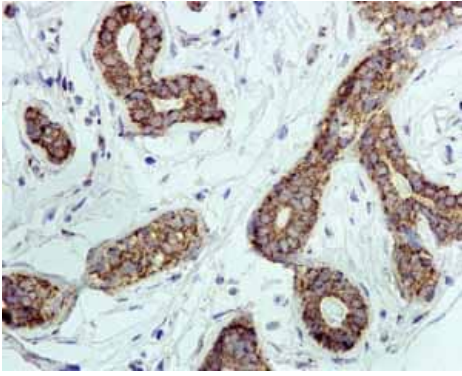
Perform heat mediated antigen retrieval with citrate buffer pH 6 before commencing with IHC staining protocol.



Immunohistochemistry (Formalin/PFA-fixed paraffin-embedded sections) - Anti-EPF antibody [EPR4476] (ab108600)

ab108600 showing positive staining in Ovarian carcinoma tissue.

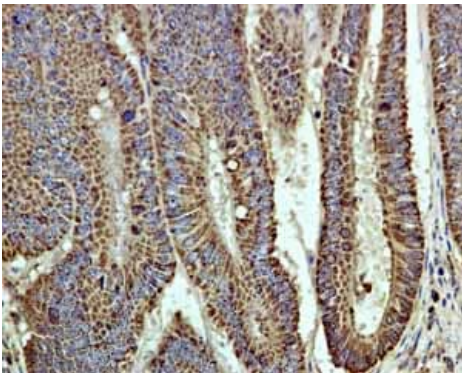
Perform heat mediated antigen retrieval with citrate buffer pH 6 before commencing with IHC staining protocol.



Immunohistochemistry (Formalin/PFA-fixed paraffin-embedded sections) - Anti-EPF antibody [EPR4476] (ab108600)

ab108600 showing positive staining in Normal breast tissue.

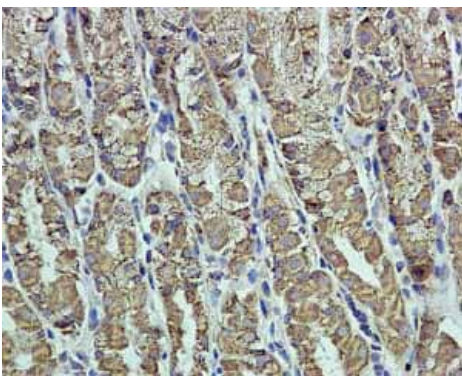
Perform heat mediated antigen retrieval with citrate buffer pH 6 before commencing with IHC staining protocol.



Immunohistochemistry (Formalin/PFA-fixed paraffin-embedded sections) - Anti-EPF antibody [EPR4476] (ab108600)

ab108600 showing positive staining in Colonic adenocarcinoma tissue.

Perform heat mediated antigen retrieval with citrate buffer pH 6 before commencing with IHC staining protocol.



Immunohistochemistry (Formalin/PFA-fixed paraffin-embedded sections) - Anti-EPF antibody [EPR4476] (ab108600)

ab108600 showing positive staining in Normal stomach tissue.

Perform heat mediated antigen retrieval with citrate buffer pH 6 before commencing with IHC staining protocol.

### Why choose a recombinant antibody?



**Research with confidence**  
Consistent and reproducible results



**Long-term and scalable supply**  
Recombinant technology



**Success from the first experiment**  
Confirmed specificity



**Ethical standards compliant**  
Animal-free production

Anti-EPF antibody [EPR4476] (ab108600)

**Please note:** All products are "FOR RESEARCH USE ONLY. NOT FOR USE IN DIAGNOSTIC PROCEDURES"

### Our Abpromise to you: Quality guaranteed and expert technical support

---

- Replacement or refund for products not performing as stated on the datasheet
- Valid for 12 months from date of delivery
- Response to your inquiry within 24 hours
- We provide support in Chinese, English, French, German, Japanese and Spanish
- Extensive multi-media technical resources to help you
- We investigate all quality concerns to ensure our products perform to the highest standards

If the product does not perform as described on this datasheet, we will offer a refund or replacement. For full details of the Abpromise, please visit <https://www.abcam.cn/abpromise> or contact our technical team.

### Terms and conditions

---

- Guarantee only valid for products bought direct from Abcam or one of our authorized distributors