

Anti-EPCR/CD201 antibody [RCR-252] ab81712

5 References [1 图像](#)

概述

| | |
|-------|---|
| 产品名称 | Anti-EPCR/CD201抗体[RCR-252] |
| 描述 | 大鼠单克隆抗体[RCR-252] to EPCR/CD201 |
| 宿主 | Rat |
| 经测试应用 | 适用于: Flow Cyt |
| 种属反应性 | 与反应: Human |
| 免疫原 | Tissue, cells or virus. This information is proprietary to Abcam and/or its suppliers. |
| 表位 | Antibody RCR-252 stains the extracellular domain of human EPCR. |
| 阳性对照 | Flow Cyt: HUVEC cells. |
| 常规说明 | <p>Ablates APC binding to EPCR/CD201 thus blocking APC-mediated signalling.</p> <p>The Life Science industry has been in the grips of a reproducibility crisis for a number of years. Abcam is leading the way in addressing this with our range of recombinant monoclonal antibodies and knockout edited cell lines for gold-standard validation. Please check that this product meets your needs before purchasing.</p> <p>If you have any questions, special requirements or concerns, please send us an inquiry and/or contact our Support team ahead of purchase. Recommended alternatives for this product can be found below, along with publications, customer reviews and Q&As</p> |

性能

| | |
|--------------------|---|
| 形式 | Liquid |
| 存放说明 | Shipped at 4°C. Upon delivery aliquot and store at -20°C. Avoid freeze / thaw cycles. |
| 存储溶液 | Constituents: 0.1% BSA, PBS |
| 纯度 | Protein A purified |
| 纯化说明 | 0.2µM filtered |
| Primary antibody说明 | Ablates APC binding to EPCR/CD201 thus blocking APC-mediated signalling. |
| 克隆 | 单克隆 |
| 克隆编号 | RCR-252 |
| 同种型 | IgG1 |

应用

The Abpromise guarantee

Abpromise™ 承诺保证使用ab81712于以下的经测试应用

“应用说明”部分 下显示的仅为推荐的起始稀释度;实际最佳的稀释度/浓度应由使用者检定。

| 应用 | Ab评论 | 说明 |
|----------|------|--|
| Flow Cyt | | 1/50. ab18407 - Rat monoclonal IgG1, is suitable for use as an isotype control with this antibody. |

靶标

功能

Binds activated protein C. Enhances protein C activation by the thrombin-thrombomodulin complex; plays a role in the protein C pathway controlling blood coagulation.

组织特异性

Expressed strongly in the endothelial cells of arteries and veins in heart and lung, less intensely in capillaries in the lung and skin, and not at all in the endothelium of small vessels of the liver and kidney.

翻译后修饰

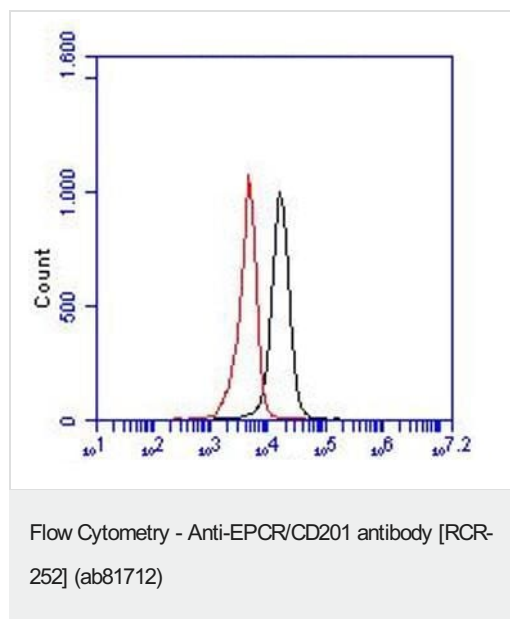
N-glycosylated.

A soluble form exists; probably released by a metalloprotease. Seems to have the same activity as the membrane-bound form.

细胞定位

Membrane.

图片



Detection of EPCR in HUVEC cells. Red and black line represent the isotype control and ab81712 at 20 µg/ml, respectively.

Please note: All products are "FOR RESEARCH USE ONLY. NOT FOR USE IN DIAGNOSTIC PROCEDURES"

Our Abpromise to you: Quality guaranteed and expert technical support

- Replacement or refund for products not performing as stated on the datasheet
- Valid for 12 months from date of delivery
- Response to your inquiry within 24 hours

- We provide support in Chinese, English, French, German, Japanese and Spanish
- Extensive multi-media technical resources to help you
- We investigate all quality concerns to ensure our products perform to the highest standards

If the product does not perform as described on this datasheet, we will offer a refund or replacement. For full details of the Abpromise, please visit <https://www.abcam.cn/abpromise> or contact our technical team.

Terms and conditions

- Guarantee only valid for products bought direct from Abcam or one of our authorized distributors