

Anti-EPB41L2 antibody ab99375

2 图像

概述

产品名称	Anti-EPB41L2抗体
描述	兔多克隆抗体to EPB41L2
宿主	Rabbit
经测试应用	适用于: WB, IP
种属反应性	与反应: Human 预测可用于: Chimpanzee, Gorilla, Orangutan 
免疫原	Synthetic peptide corresponding to Human EPB41L2 aa 100-150. Database link: NP_001422.1
阳性对照	HeLa whole cell lysate.
常规说明	<p>The Life Science industry has been in the grips of a reproducibility crisis for a number of years. Abcam is leading the way in addressing this with our range of recombinant monoclonal antibodies and knockout edited cell lines for gold-standard validation. Please check that this product meets your needs before purchasing.</p> <p>If you have any questions, special requirements or concerns, please send us an inquiry and/or contact our Support team ahead of purchase. Recommended alternatives for this product can be found below, along with publications, customer reviews and Q&As</p>

性能

形式	Liquid
存放说明	Shipped at 4°C. Upon delivery aliquot and store at -20°C. Avoid freeze / thaw cycles.
存储溶液	pH: 6.8 Preservative: 0.09% Sodium azide Constituents: 0.1% BSA, Tris buffered saline
纯度	Immunogen affinity purified
克隆	多克隆
同种型	IgG

应用

The Abpromise guarantee

Abpromise™ 承诺保证使用 ab99375 于以下的经测试应用

“应用说明”部分 下显示的仅为推荐的起始稀释度; 实际最佳的稀释度/浓度应由使用者检定。

应用	Ab 评论	说明
WB		1/2000 - 1/10000. Predicted molecular weight: 113 kDa.
IP		Use at 2-5 µg/mg of lysate.

靶标

组织特异性

Widely expressed.

序列相似性

Contains 1 FERM domain.

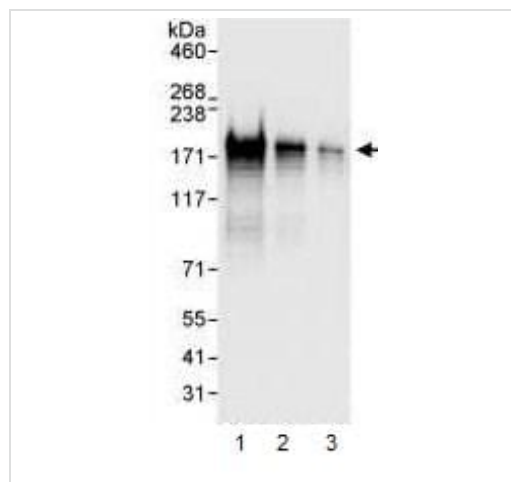
翻译后修饰

Phosphorylated upon DNA damage, probably by ATM or ATR.

细胞定位

Cytoplasm > cytoskeleton.

图片



Western blot - Anti-EPB41L2 antibody (ab99375)

All lanes : Anti-EPB41L2 antibody (ab99375) at 0.04 µg/ml

Lane 1 : HeLa whole cell lysate at 50 µg

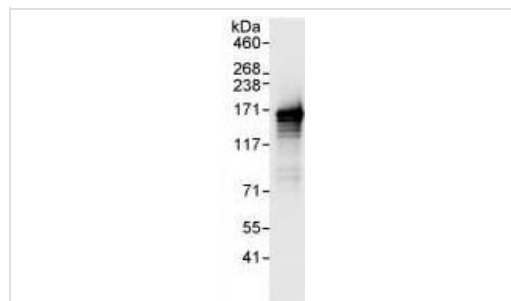
Lane 2 : HeLa whole cell lysate at 15 µg

Lane 3 : HeLa whole cell lysate at 5 µg

Developed using the ECL technique.

Predicted band size: 113 kDa

Exposure time: 10 seconds



Immunoprecipitation - Anti-EPB41L2 antibody (ab99375)

B>Immunoprecipitation: 1 mg of HeLa cell lysate

immunoprecipitated with ab99375 at 3 µg/mg lysate; 20% of immunoprecipitate loaded in lane

Western Blot: EPB41L2 antibody (ab99375) at 1 µg/ml

developed using the ECL technique

Exposure time : 10 seconds

Predicted band size : 113 kDa

Please note: All products are "FOR RESEARCH USE ONLY. NOT FOR USE IN DIAGNOSTIC PROCEDURES"

Our Abpromise to you: Quality guaranteed and expert technical support

- Replacement or refund for products not performing as stated on the datasheet
- Valid for 12 months from date of delivery
- Response to your inquiry within 24 hours

- We provide support in Chinese, English, French, German, Japanese and Spanish
- Extensive multi-media technical resources to help you
- We investigate all quality concerns to ensure our products perform to the highest standards

If the product does not perform as described on this datasheet, we will offer a refund or replacement. For full details of the Abpromise, please visit <https://www.abcam.cn/abpromise> or contact our technical team.

Terms and conditions

- Guarantee only valid for products bought direct from Abcam or one of our authorized distributors