


Anti-Epac1 antibody [EPR1672] ab109415

重组 RabMAb

★★★★★ [2 Abreviews](#) [5 References](#) [3 图像](#)

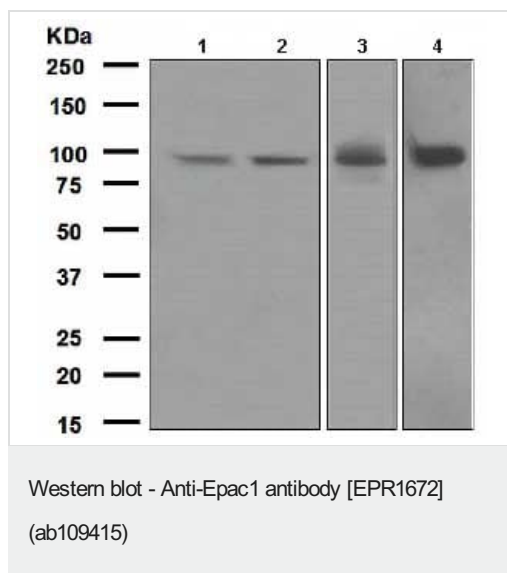
概述

| | |
|-------|--|
| 产品名称 | Anti-Epac1抗体[EPR1672] |
| 描述 | 兔单克隆抗体[EPR1672] to Epac1 |
| 宿主 | Rabbit |
| 经测试应用 | 适用于: WB, IHC-P 不适用于: Flow Cyt |
| 种属反应性 | 与反应: Human 预测可用于: Mouse, Rat  |
| 免疫原 | Synthetic peptide. This information is proprietary to Abcam and/or its suppliers. |
| 阳性对照 | HeLa, HepG2, Human heart and HUVEC lysates; Human kidney tissue |
| 常规说明 | <p>This product is a recombinant monoclonal antibody, which offers several advantages including:</p> <ul style="list-style-type: none">- High batch-to-batch consistency and reproducibility- Improved sensitivity and specificity- Long-term security of supply- Animal-free production <p>For more information see here.</p> <p>Our RabMAb[®] technology is a patented hybridoma-based technology for making rabbit monoclonal antibodies. For details on our patents, please refer to RabMAb[®] patents.</p> |

性能

| | |
|------|--|
| 形式 | Liquid |
| 存放说明 | Shipped at 4°C. Store at -20°C. Stable for 12 months at -20°C. |
| 存储溶液 | pH: 7.20 Preservative: 0.05% Sodium azide Constituents: 0.1% BSA, 40% Glycerol (glycerin, glycerine), 9.85% Tris glycine, 50% Tissue culture supernatant |
| 纯度 | Protein A purified |
| 克隆 | 单克隆 |
| 克隆编号 | EPR1672 |

| | | |
|---|--|--|
| 同种型 | IgG | |
| 应用 | | |
| <div>The Abpromise guarantee<div>Abpromise™承诺保证使用ab109415于以下的经测试应用</div></div> <div>“应用说明”部分 下显示的仅为推荐的起始稀释度;实际最佳的稀释度/浓度应由使用者检定。</div> | | |
| 应用 | Ab评论 | 说明 |
| WB | <div><div><div>★ ★ ★ ★ ★ ☆ (1)</div></div></div> | 1/1000 - 1/10000. Predicted molecular weight: 104 kDa. |
| IHC-P | | 1/50 - 1/100. Perform heat mediated antigen retrieval with citrate buffer pH 6 before commencing with IHC staining protocol. Antigen retrieval is recommended. |
| 应用说明 | Is unsuitable for Flow Cyt. | |
| 靶标 | | |
| 相关性 | <div>The activation of RaP1 by cAMP is independent of PKA and is mediated by recently discovered family of guanine nucleotide exchange factors (GEFs) called cAMP-GEFs or Epacs. The Epac signaling therefore represents a novel mechanism for cAMP signaling with in the cAMP cascade. There are 2 members of the Epac family, Epac1 and Epac 2. Both proteins are multidomain proteins containing an autoinhibitory cAMP-binding domain that inhibits the catalytic region and a DEP domain (dishevelled, Egl-10 and pleckstrin homology domain) targeting the membrane anchors. EPAC2 has an additional cAMP-binding site in its N-terminus that binds cAMP with low affinity. EPAC1 mRNA is broadly expressed, with particularly high levels occurring in the thyroid, ovary, kidney and certain brain regions, whereas expression of EPAC2 mRNA appears to be restricted to the brain and adrenal glands. Epac 1 and Epac 2 also interact with light chain 2 (LC2) or MAP1A that serves as a scaffolding structure to stabilize the signal transduction complex. The Epac 1-selective antibodies were generated against unique antigenic sequences form near N-terminus and between RasGEFN and Ras GEF domains. The antibodies to Epac 1are affinity purified over immobilized antigen based chromatography.</div> | |
| 细胞定位 | Endomembrane system | |
| 图片 | | |



All lanes : Anti-Epac1 antibody [EPR1672] (ab109415) at 1/1000 dilution

Lane 1 : HeLa cell lysate

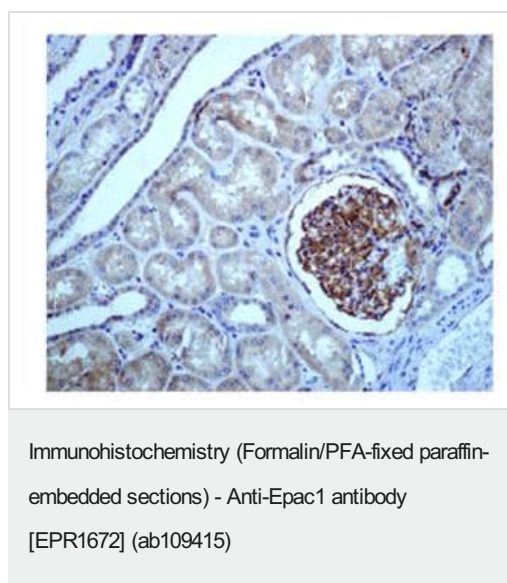
Lane 2 : HepG2 cell lysate

Lane 3 : Human heart lysate

Lane 4 : HUVEC cell lysate

Lysates/proteins at 10 µg per lane.

Predicted band size: 104 kDa



Immunohistochemical analysis of Epac1 in paraffin-embedded Human kidney tissue using ab109415 at 1/50 dilution.

Perform heat mediated antigen retrieval with citrate buffer pH 6 before commencing with IHC staining protocol.

Why choose a recombinant antibody?

Research with confidence
Consistent and reproducible results

Long-term and scalable supply
Recombinant technology

Success from the first experiment
Confirmed specificity

Ethical standards compliant
Animal-free production

Anti-Epac1 antibody [EPR1672] (ab109415)

Please note: All products are "FOR RESEARCH USE ONLY. NOT FOR USE IN DIAGNOSTIC PROCEDURES"

Our Abpromise to you: Quality guaranteed and expert technical support

- Replacement or refund for products not performing as stated on the datasheet
- Valid for 12 months from date of delivery
- Response to your inquiry within 24 hours

- We provide support in Chinese, English, French, German, Japanese and Spanish
- Extensive multi-media technical resources to help you
- We investigate all quality concerns to ensure our products perform to the highest standards

If the product does not perform as described on this datasheet, we will offer a refund or replacement. For full details of the Abpromise, please visit <https://www.abcam.cn/abpromise> or contact our technical team.

Terms and conditions

- Guarantee only valid for products bought direct from Abcam or one of our authorized distributors