

Anti-Enterococcus antibody ab19980

★★★★★ [1 Abreviews](#) [2 References](#) [1 图像](#)

概述

产品名称	Anti-Enterococcus抗体
描述	兔多克隆抗体to Enterococcus
宿主	Rabbit
经测试应用	适用于: IHC-P, ICC/IF
种属反应性	与反应: Enterococcus faecium
免疫原	Tissue, cells or virus corresponding to Enterococcus. Enterococcus faecium
常规说明	<p>The Life Science industry has been in the grips of a reproducibility crisis for a number of years. Abcam is leading the way in addressing this with our range of recombinant monoclonal antibodies and knockout edited cell lines for gold-standard validation. Please check that this product meets your needs before purchasing.</p> <p>If you have any questions, special requirements or concerns, please send us an inquiry and/or contact our Support team ahead of purchase. Recommended alternatives for this product can be found below, along with publications, customer reviews and Q&As</p>

性能

形式	Liquid
存放说明	Shipped at 4°C. Upon delivery aliquot and store at -20°C. Avoid freeze / thaw cycles.
存储溶液	Preservative: 0.1% Sodium azide Constituent: 0.0268% PBS
纯度	No stabilizing proteins have been added. Protein A purified
纯化说明	>95% pure.
克隆	多克隆
同种型	IgG

应用

The Abpromise guarantee

Abpromise™ 承诺保证使用ab19980于以下的经测试应用

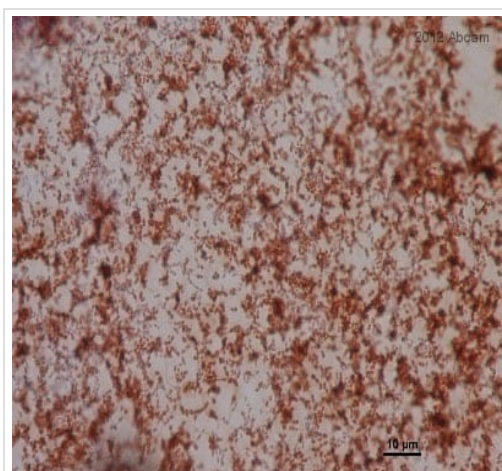
“应用说明”部分 下显示的仅为推荐的起始稀释度;实际最佳的稀释度/浓度应由使用者检定。

应用	Ab评论	说明
IHC-P	★★★★★ (1)	Use at an assay dependent concentration.
ICC/IF		1/1000.

靶标

相关性 Enterococci form part of the lactic acid bacteria family and are the third most important bacterial genus in hospital infections, especially *Enterococcus (E.) faecium*. In food they can spoil processed meats but they are equally important for ripening and aroma development of certain traditional cheeses and sausages, and are used as human probiotics. However, they possess a broad spectrum antibiotic resistance which has important implications to human health and disease.

图片



Immunohistochemical analysis of porcine plasma-based in vitro grown biofilm, staining *Enterococcus* with ab19980.

Tissue was fixed with paraformaldehyde and blocked with 1% BSA for 30 minutes at room temperature. Samples were incubated with primary antibody (1/10000 in blocking buffer) for 18 hours at 4°C. Staining was detected using DAB.

Immunohistochemistry (Formalin/PFA-fixed paraffin-embedded sections) - Anti-*Enterococcus* antibody (ab19980)

This image is courtesy of an Abreview submitted by Jan Kučera

Please note: All products are "FOR RESEARCH USE ONLY. NOT FOR USE IN DIAGNOSTIC PROCEDURES"

Our Abpromise to you: Quality guaranteed and expert technical support

- Replacement or refund for products not performing as stated on the datasheet
- Valid for 12 months from date of delivery
- Response to your inquiry within 24 hours
- We provide support in Chinese, English, French, German, Japanese and Spanish

- Extensive multi-media technical resources to help you
- We investigate all quality concerns to ensure our products perform to the highest standards

If the product does not perform as described on this datasheet, we will offer a refund or replacement. For full details of the Abpromise, please visit <https://www.abcam.cn/abpromise> or contact our technical team.

Terms and conditions

- Guarantee only valid for products bought direct from Abcam or one of our authorized distributors