

### Anti-ENSA antibody ab125873

#### 3 图像

#### 概述

---

<b>产品名称</b>	Anti-ENSA抗体
<b>描述</b>	兔多克隆抗体to ENSA
<b>宿主</b>	Rabbit
<b>经测试应用</b>	<b>适用于:</b> WB, ICC/IF
<b>种属反应性</b>	<b>与反应:</b> Human
<b>免疫原</b>	Recombinant fragment, corresponding to a region within amino acids 1-102 of Human ENSA (NP_004427).
<b>阳性对照</b>	A549 whole cell lysate HeLa whole cell lysate HCT116 whole cell lysate HeLa cells (methanol fixed)
<b>常规说明</b>	<p>The Life Science industry has been in the grips of a reproducibility crisis for a number of years. Abcam is leading the way in addressing this with our range of recombinant monoclonal antibodies and knockout edited cell lines for gold-standard validation. Please check that this product meets your needs before purchasing.</p> <p>If you have any questions, special requirements or concerns, please send us an inquiry and/or contact our Support team ahead of purchase. Recommended alternatives for this product can be found below, along with publications, customer reviews and Q&amp;As</p>

#### 性能

---

<b>形式</b>	Liquid
<b>存放说明</b>	Shipped at 4°C. Upon delivery aliquot and store at -20°C or -80°C. Avoid repeated freeze / thaw cycles.
<b>存储溶液</b>	pH: 7.00 Preservative: 0.01% Thimerosal (merthiolate) Constituents: 78.99% PBS, 1% BSA, 20% Glycerol (glycerin, glycerine)
<b>纯度</b>	Immunogen affinity purified
<b>克隆</b>	多克隆
<b>同种型</b>	IgG

#### 应用

---

## The Abpromise guarantee

**Abpromise™** 承诺保证使用 ab125873 于以下的经测试应用

“应用说明”部分下显示的仅为推荐的起始稀释度；实际最佳的稀释度/浓度应由使用者检定。

应用	Ab评论	说明
WB		1/500 - 1/3000. Predicted molecular weight: 13 kDa.
ICC/IF		1/100 - 1/1000.

## 靶标

### 功能

Protein phosphatase inhibitor that specifically inhibits protein phosphatase 2A (PP2A) during mitosis. When phosphorylated at Ser-67 during mitosis, specifically interacts with PPP2R2D (PR55-delta) and inhibits its activity, leading to inactivation of PP2A, an essential condition to keep cyclin-B1-CDK1 activity high during M phase (By similarity). Also acts as a stimulator of insulin secretion by interacting with sulfonylurea receptor (ABCC8), thereby preventing sulfonylurea from binding to its receptor and reducing K(ATP) channel currents.

### 组织特异性

Widely expressed with high levels in skeletal muscle and brain and lower levels in the pancreas.

### 序列相似性

Belongs to the endosulfine family.

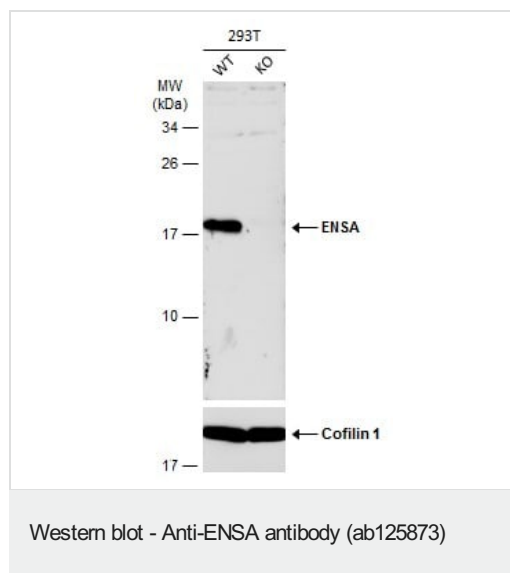
### 翻译后修饰

Phosphorylation at Ser-67 by GWL during mitosis is essential for interaction with PPP2R2D (PR55-delta) and subsequent inactivation of PP2A (By similarity). Phosphorylated by PKA.

### 细胞定位

Cytoplasm.

## 图片



**All lanes** : Anti-ENSA antibody (ab125873) at 1/500 dilution

**Lane 1** : WT 293T cell extracts

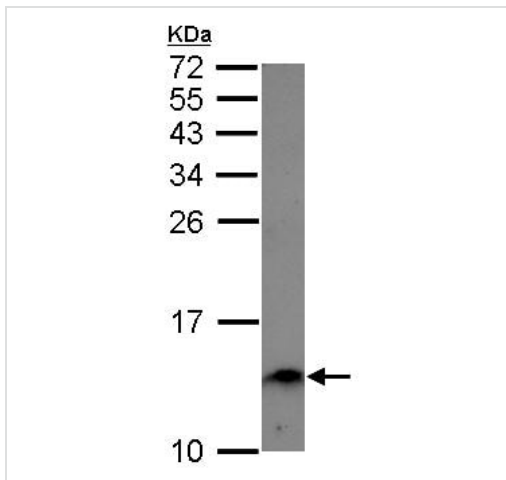
**Lane 2** : ENSA Knockout 293T cell extracts

Lysates/proteins at 30 µg per lane.

### Secondary

**All lanes** : HRP-conjugated anti-rabbit IgG

**Predicted band size:** 13 kDa

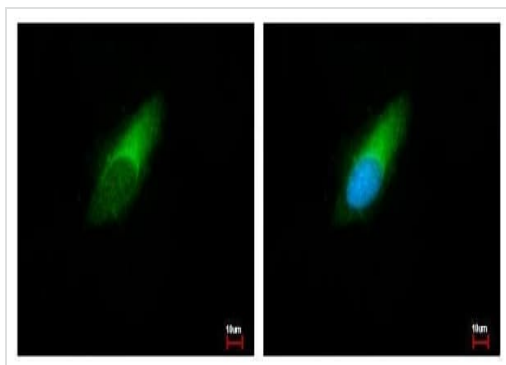


Western blot - Anti-ENSA antibody (ab125873)

Anti-ENSA antibody (ab125873) at 1/1000 dilution + A549 whole cell lysate at 30 µg

**Predicted band size:** 13 kDa

15% SDS PAGE



Immunocytochemistry/ Immunofluorescence - Anti-ENSA antibody (ab125873)

Methanol-fixed HeLa (human epithelial cell line from cervix adenocarcinoma) cells stained for ENSA (green) using ab125873 at 1/500 dilution in ICC/IF. Blue: Hoechst 33343 staining.

**Please note:** All products are "FOR RESEARCH USE ONLY. NOT FOR USE IN DIAGNOSTIC PROCEDURES"

### Our Abpromise to you: Quality guaranteed and expert technical support

- Replacement or refund for products not performing as stated on the datasheet
- Valid for 12 months from date of delivery
- Response to your inquiry within 24 hours
- We provide support in Chinese, English, French, German, Japanese and Spanish
- Extensive multi-media technical resources to help you
- We investigate all quality concerns to ensure our products perform to the highest standards

If the product does not perform as described on this datasheet, we will offer a refund or replacement. For full details of the Abpromise,

please visit <https://www.abcam.cn/abpromise> or contact our technical team.

## **Terms and conditions**

---

- Guarantee only valid for products bought direct from Abcam or one of our authorized distributors