


Anti-ENPP1/PC1 antibody ab40003

[2 Abreviews](#) [9 References](#) [1 图像](#)

概述

产品名称	Anti-ENPP1/PC1抗体
描述	山羊多克隆抗体to ENPP1/PC1
宿主	Goat
经测试应用	适用于: IHC-P
种属反应性	与反应: Human 预测可用于: Mouse, Rat 
免疫原	Synthetic peptide. This information is proprietary to Abcam and/or its suppliers.
常规说明	<p>The Life Science industry has been in the grips of a reproducibility crisis for a number of years. Abcam is leading the way in addressing this with our range of recombinant monoclonal antibodies and knockout edited cell lines for gold-standard validation. Please check that this product meets your needs before purchasing.</p> <p>If you have any questions, special requirements or concerns, please send us an inquiry and/or contact our Support team ahead of purchase. Recommended alternatives for this product can be found below, along with publications, customer reviews and Q&As</p>

性能

形式	Liquid
存放说明	Shipped at 4°C. Upon delivery aliquot and store at -20°C. Avoid freeze / thaw cycles.
存储溶液	pH: 7.30 Preservative: 0.02% Sodium azide Constituents: Tris buffered saline, 0.5% BSA
纯度	Immunogen affinity purified
纯化说明	Purified from goat serum by ammonium sulphate precipitation followed by antigen affinity chromatography using the immunizing peptide.
克隆	多克隆
同种型	IgG

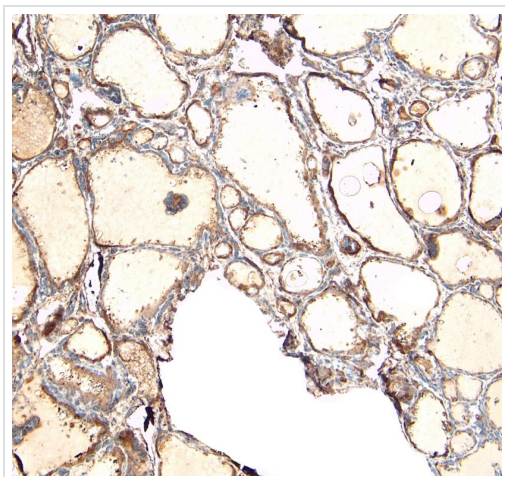
应用

“应用说明”部分 下显示的仅为推荐的起始稀释度;实际最佳的稀释度/浓度应由使用者检定。

应用	Ab评论	说明
IHC-P		Use a concentration of 8 µg/ml. Perform heat mediated antigen retrieval with citrate buffer pH 6 before commencing with IHC staining protocol.

靶标

功能	Involved primarily in ATP hydrolysis at the plasma membrane. Plays a role in regulating pyrophosphate levels, and functions in bone mineralization and soft tissue calcification. In vitro, has a broad specificity, hydrolyzing other nucleoside 5' triphosphates such as GTP, CTP, TTP and UTP to their corresponding monophosphates with release of pyrophosphate and diadenosine polyphosphates, and also 3',5'-cAMP to AMP. May also be involved in the regulation of the availability of nucleotide sugars in the endoplasmic reticulum and Golgi, and the regulation of purinergic signaling. Appears to modulate insulin sensitivity.
组织特异性	Expressed in plasma cells and also in a number of non-lymphoid tissues, including the distal convoluted tubule of the kidney, chondrocytes and epididymis.
疾病相关	<p>Defects in ENPP1 are a cause of increased susceptibility for ossification of the posterior longitudinal ligament of the spine (OPLL) [MIM:602475]. OPLL is a common form of human myelopathy with a prevalence of as much as 4% in a variety of ethnic groups.</p> <p>Defects in ENPP1 are the cause of arterial calcification of infancy, generalized, type 1 (GAC11) [MIM:208000]. A severe autosomal recessive disorder characterized by calcification of the internal elastic lamina of muscular arteries and stenosis due to myointimal proliferation. The disorder is often fatal within the first 6 months of life because of myocardial ischemia resulting in refractory heart failure.</p> <p>Defects in ENPP1 are associated with obesity, glucose intolerance, and type II diabetes non-insulin dependent (NIDDM) [MIM:125853].</p> <p>Defects in ENPP1 are the cause of rickets hypophosphatemic autosomal recessive type 2 (ARHR2) [MIM:613312]. ARHR2 is a hereditary form of hypophosphatemic rickets, a disorder of proximal renal tubule function that causes phosphate loss, hypophosphatemia and skeletal deformities, including rickets and osteomalacia unresponsive to vitamin D. Symptoms are bone pain, fractures and growth abnormalities.</p>
序列相似性	<p>Belongs to the nucleotide pyrophosphatase/phosphodiesterase family.</p> <p>Contains 2 SMB (somatomedin-B) domains.</p>
结构域	The di-leucine motif is required for basolateral targeting in epithelial cells, and for targeting to matrix vesicles derived from mineralizing cells.
翻译后修饰	<p>Autophosphorylated as part of the catalytic cycle of phosphodiesterase/pyrophosphatase activity. N-glycosylated.</p> <p>It has been suggested that the active SMB domain may be permitted considerable disulfide bond heterogeneity or variability, thus two alternate disulfide patterns based on 3D structures are described with 1 disulfide bond conserved in both.</p>
细胞定位	Membrane. Basolateral cell membrane. Targeted to the basolateral membrane in polarized epithelial cells and in hepatocytes, and to matrix vesicles in osteoblasts. In bile duct cells and cancer cells, located to the apical cytoplasmic side.



Immunohistochemistry (Formalin/PFA-fixed paraffin-embedded sections) analysis of human thyroid gland labeling ENPP1/PC1 with ab40003 (8µg/ml). Heat induced antigen retrieval with citrate buffer pH 6, HRP-staining.

Immunohistochemistry (Formalin/PFA-fixed paraffin-embedded sections) - Anti-ENPP1/PC1 antibody (ab40003)

Please note: All products are "FOR RESEARCH USE ONLY. NOT FOR USE IN DIAGNOSTIC PROCEDURES"

Our Abpromise to you: Quality guaranteed and expert technical support

- Replacement or refund for products not performing as stated on the datasheet
- Valid for 12 months from date of delivery
- Response to your inquiry within 24 hours
- We provide support in Chinese, English, French, German, Japanese and Spanish
- Extensive multi-media technical resources to help you
- We investigate all quality concerns to ensure our products perform to the highest standards

If the product does not perform as described on this datasheet, we will offer a refund or replacement. For full details of the Abpromise, please visit <https://www.abcam.cn/abpromise> or contact our technical team.

Terms and conditions

- Guarantee only valid for products bought direct from Abcam or one of our authorized distributors