

### Anti-ENO3 antibody ab119327

#### 1 图像

#### 概述

产品名称	Anti-ENO3抗体
描述	兔多克隆抗体to ENO3
宿主	Rabbit
经测试应用	适用于: WB
种属反应性	与反应: Mouse, Human
免疫原	Synthetic peptide conjugated to KLH, surrounding amino acids 49-53 (L-R-D-G-D) of Human ENO3.
阳性对照	3T3, HepG2 and C2C12 cell extracts.
常规说明	<p>The Life Science industry has been in the grips of a reproducibility crisis for a number of years. Abcam is leading the way in addressing this with our range of recombinant monoclonal antibodies and knockout edited cell lines for gold-standard validation. Please check that this product meets your needs before purchasing.</p> <p>If you have any questions, special requirements or concerns, please send us an inquiry and/or contact our Support team ahead of purchase. Recommended alternatives for this product can be found below, along with publications, customer reviews and Q&amp;As</p>

#### 性能

形式	Liquid
存放说明	Shipped at 4°C. Store at -20°C. Stable for 12 months at -20°C.
存储溶液	<p>pH: 7.40</p> <p>Preservative: 0.02% Sodium azide</p> <p>Constituents: 50% Glycerol (glycerin, glycerine), 48% PBS, 0.88% Sodium chloride</p>
纯度	PBS (without Mg <sup>2+</sup> and Ca <sup>2+</sup> )
克隆	Immunogen affinity purified
同种型	多克隆
	IgG

#### 应用

## The Abpromise guarantee

**Abpromise™** 承诺保证使用ab119327于以下的经测试应用

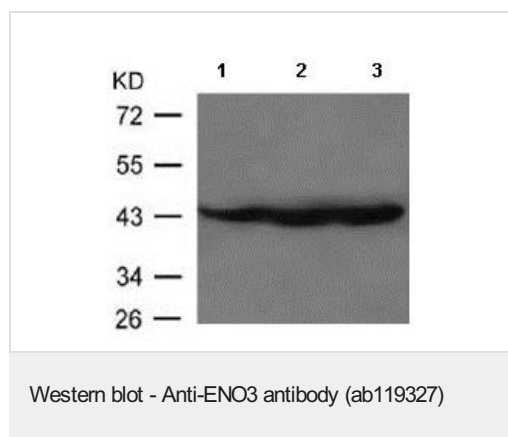
“应用说明”部分 下显示的仅为推荐的起始稀释度;实际最佳的稀释度/浓度应由使用者检定。

应用	Ab评论	说明
WB		1/500 - 1/1000. Predicted molecular weight: 47 kDa.

## 靶标

功能	Appears to have a function in striated muscle development and regeneration.
组织特异性	The alpha/alpha homodimer is expressed in embryo and in most adult tissues. The alpha/beta heterodimer and the beta/beta homodimer are found in striated muscle, and the alpha/gamma heterodimer and the gamma/gamma homodimer in neurons.
通路	Carbohydrate degradation; glycolysis; pyruvate from D-glyceraldehyde 3-phosphate: step 4/5.
疾病相关	Defects in ENO3 are the cause of glycogen storage disease type 13 (GSD13) [MIM:612932]. A metabolic disorder that results in exercise-induced myalgias, generalized muscle weakness and fatigability. It is characterized by increased serum creatine kinase and decreased enolase 3 activity. Dramatically reduced protein levels with focal sarcoplasmic accumulation of glycogen-beta particles are detected on ultrastructural analysis.
序列相似性	Belongs to the enolase family.
发展阶段	During ontogenesis, there is a transition from the alpha/alpha homodimer to the alpha/beta heterodimer in striated muscle cells, and to the alpha/gamma heterodimer in nerve cells.
细胞定位	Cytoplasm. Localized to the Z line. Some colocalization with CKM at M-band.

## 图片



**All lanes :** Anti-ENO3 antibody (ab119327) at 1/500 dilution

**Lane 1 :** 3T3 cell extract

**Lane 2 :** HepG2 cell extract

**Lane 3 :** C2C12 cell extract

**Predicted band size:** 47 kDa

**Please note:** All products are "FOR RESEARCH USE ONLY. NOT FOR USE IN DIAGNOSTIC PROCEDURES"

## Our Abpromise to you: Quality guaranteed and expert technical support

- Replacement or refund for products not performing as stated on the datasheet
- Valid for 12 months from date of delivery

- Response to your inquiry within 24 hours
- We provide support in Chinese, English, French, German, Japanese and Spanish
- Extensive multi-media technical resources to help you
- We investigate all quality concerns to ensure our products perform to the highest standards

If the product does not perform as described on this datasheet, we will offer a refund or replacement. For full details of the Abpromise, please visit <https://www.abcam.cn/abpromise> or contact our technical team.

#### **Terms and conditions**

---

- Guarantee only valid for products bought direct from Abcam or one of our authorized distributors