


Anti-Engrailed and Invected antibody [4D9] ab12454

★★★★★ [1 Abreviews](#) [12 References](#) [3 图像](#)

概述

产品名称	Anti-Engrailed and Invected抗体[4D9]
描述	小鼠单克隆抗体[4D9] to Engrailed and Invected
宿主	Mouse
经测试应用	适用于: IHC - Wholmount
种属反应性	与反应: Drosophila melanogaster 预测可用于: Chicken, Xenopus laevis, Zebrafish, Crayfish  不与反应: Mouse
免疫原	This product was produced with the following immunogens: Recombinant fragment. This information is proprietary to Abcam and/or its suppliers. Recombinant fragment. This information is proprietary to Abcam and/or its suppliers.
表位	Epitope has been localized to residues 38-58 of the homeodomain.
常规说明	This antibody clone is manufactured by Abcam. If you require a custom buffer formulation or conjugation for your experiments, please contact orders@abcam.com . The Life Science industry has been in the grips of a reproducibility crisis for a number of years. Abcam is leading the way in addressing this with our range of recombinant monoclonal antibodies and knockout edited cell lines for gold-standard validation. Please check that this product meets your needs before purchasing. If you have any questions, special requirements or concerns, please send us an inquiry and/or contact our Support team ahead of purchase. Recommended alternatives for this product can be found below, along with publications, customer reviews and Q&As

性能

形式	Liquid
存放说明	Shipped at 4°C. Store at +4°C short term (1-2 weeks). Upon delivery aliquot. Store at -20°C or -80°C. Avoid freeze / thaw cycle.
存储溶液	pH: 7.40 Preservative: 0.02% Sodium azide Constituent: PBS
纯度	Protein G purified

克隆	单克隆
克隆编号	4D9
骨髓瘤	NS1
同种型	IgG1
轻链类型	kappa

应用

The Abpromise guarantee **Abpromise™**承诺保证使用ab12454于以下的经测试应用

“应用说明”部分 下显示的仅为推荐的起始稀释度;实际最佳的稀释度/浓度应由使用者检定。

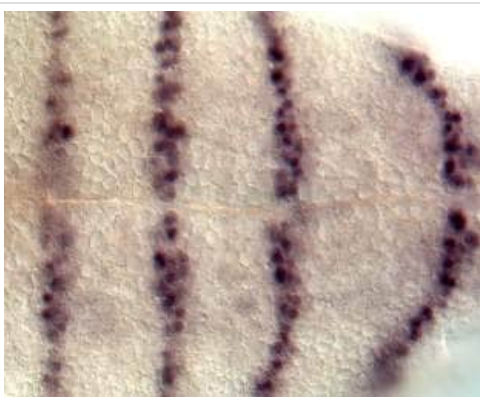
应用	Ab评论	说明
IHC - Wholemout		1/200. Fix with 4% paraformaldehyde in PBS for 1 hour.

靶标

相关性

In *Drosophila*, the Engrailed gene plays an important role during development in segmentation, where it is required for the formation of posterior compartments. Expression studies have suggested that Engrailed may also function early in organizing the preblastoderm and later in neurogenesis. Engrailed encodes a homeodomain-containing protein that can function as a transcription factor. Invested is homologous to Engrailed and the gene lies adjacent to that for Engrailed. The function of Invested is unclear.

图片



ab12454 used in immunohistochemistry at 1/200 on *Drosophila* embryos. The protocol used is available [here](#).

Briefly, embryos were bleached (5% Bleach) to dechorionate them, followed by fixation in PBS, 3.7% formaldehyde and n-Heptane, dehydration with Methanol, rehydration with PBT (PBS with 0.3% Tritone added) before antibody staining. Visualisation was with DAB.

IHC - Wholemout - Anti-Engrailed and Invested antibody [4D9] (ab12454)

This image is courtesy of Dr Torsten Bossing at the University of Plymouth.

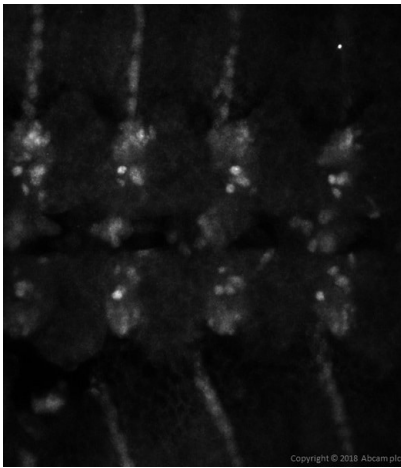


IHC - Wholemount - Anti-Engrailed and Invected antibody [4D9] (ab12454)

This image is courtesy of Dr Torsten Bossing at the University of Plymouth.

ab12454 used in immunofluorescence at 1/200 on Drosophila embryos. The protocol used is available [here](#).

Briefly, embryos were bleached (5% Bleach) to dechorionate them, followed by fixation in PBS, 3.7% formaldehyde and n-Heptane, dehydration with Methanol, rehydration with PBT (PBS with 0.3% Tritone added) before antibody staining.



IHC - Wholemount - Anti-Engrailed and Invected antibody [4D9] (ab12454)

This image is courtesy of Dr Torsten Bossing at the University of Plymouth.

ab12454 used in immunohistochemistry (Wholemount) at 1/200 dilution on Drosophila embryos. The protocol used is available [here](#).

Briefly, embryos were bleached (5% Bleach) to dechorionate them, followed by fixation in PBS, 3.7% formaldehyde and n-Heptane, dehydration with Methanol, rehydration with PBT (PBS with 0.3% Tritone added) before antibody staining. Visualisation was with DAB.

Please note: All products are "FOR RESEARCH USE ONLY. NOT FOR USE IN DIAGNOSTIC PROCEDURES"

Our Abpromise to you: Quality guaranteed and expert technical support

- Replacement or refund for products not performing as stated on the datasheet
- Valid for 12 months from date of delivery
- Response to your inquiry within 24 hours
- We provide support in Chinese, English, French, German, Japanese and Spanish
- Extensive multi-media technical resources to help you
- We investigate all quality concerns to ensure our products perform to the highest standards

If the product does not perform as described on this datasheet, we will offer a refund or replacement. For full details of the Abpromise, please visit <https://www.abcam.cn/abpromise> or contact our technical team.

Terms and conditions

- Guarantee only valid for products bought direct from Abcam or one of our authorized distributors