

Anti-Endothelin A Receptor/ET-A antibody ab85163

★★★★☆ [4 Abreviews](#) [19 References](#) [2 图像](#)

概述

产品名称	Anti-Endothelin A Receptor/ET-A抗体
描述	兔多克隆抗体to Endothelin A Receptor/ET-A
宿主	Rabbit
经测试应用	适用于: WB
种属反应性	与反应: Rat 预测可用于: Mouse, Rabbit, Dog, Human 
免疫原	Synthetic peptide corresponding to Rat Endothelin A Receptor/ET-A aa 100-200 conjugated to keyhole limpet haemocyanin. (Peptide available as ab93498)
常规说明	<p>The Life Science industry has been in the grips of a reproducibility crisis for a number of years. Abcam is leading the way in addressing this with our range of recombinant monoclonal antibodies and knockout edited cell lines for gold-standard validation. Please check that this product meets your needs before purchasing.</p> <p>If you have any questions, special requirements or concerns, please send us an inquiry and/or contact our Support team ahead of purchase. Recommended alternatives for this product can be found below, along with publications, customer reviews and Q&As</p>

性能

形式	Liquid
存放说明	Shipped at 4°C. Store at +4°C short term (1-2 weeks). Upon delivery aliquot. Store at -20°C or -80°C. Avoid freeze / thaw cycle.
存储溶液	pH: 7.40 Preservative: 0.02% Sodium azide Constituent: PBS Batches of this product that have a concentration < 1mg/ml may have BSA added as a stabilising agent. If you would like information about the formulation of a specific lot, please contact our scientific support team who will be happy to help.
纯度	Immunogen affinity purified
克隆	多克隆

应用

The Abpromise guarantee

Abpromise™ 承诺保证使用 ab85163 于以下的经测试应用

“应用说明”部分 下显示的仅为推荐的起始稀释度;实际最佳的稀释度/浓度应由使用者检定。

应用	Ab评论	说明
WB	★★★★★ (1)	Use a concentration of 1 µg/ml. Detects a band of approximately 46 kDa (predicted molecular weight: 48 kDa).

靶标

功能

Receptor for endothelin-1. Mediates its action by association with G proteins that activate a phosphatidylinositol-calcium second messenger system. The rank order of binding affinities for ET-A is: ET1 > ET2 >> ET3.

组织特异性

Isoform 1, isoform 3 and isoform 4 are expressed in a variety of tissues, with highest levels in the aorta and cerebellum, followed by lung, atrium and cerebral cortex, lower levels in the placenta, kidney, adrenal gland, duodenum, colon, ventricle and liver but no expression in umbilical vein endothelial cells. Within the placenta, isoform 1, isoform 2, isoform 3 and isoform 4 are expressed in the villi and stem villi vessels.

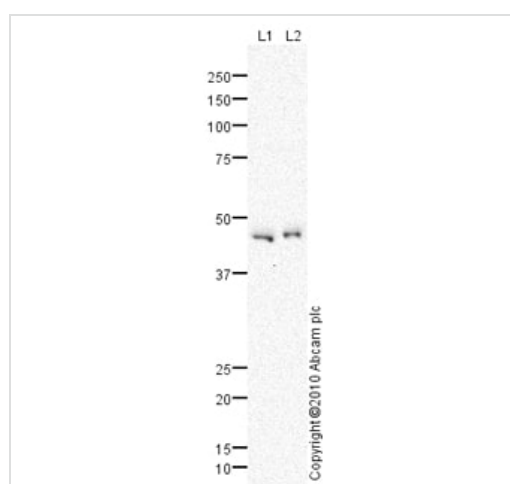
序列相似性

Belongs to the G-protein coupled receptor 1 family. Endothelin receptor subfamily. EDNRA sub-subfamily.

细胞定位

Cell membrane.

图片



Western blot - Anti-Endothelin A Receptor/ET-A antibody (ab85163)

All lanes : Anti-Endothelin A Receptor/ET-A antibody (ab85163) at 1 µg/ml

Lane 1 : Brain (Rat) Tissue Lysate

Lane 2 : Cerebellum Rat Tissue Lysate

Lysates/proteins at 10 µg per lane.

Secondary

All lanes : Goat polyclonal to Rabbit IgG - H&L - Pre-Adsorbed (HRP) at 1/3000 dilution

Developed using the ECL technique.

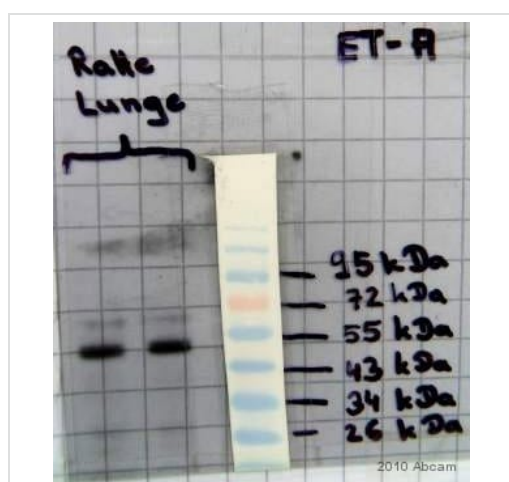
Performed under reducing conditions.

Predicted band size: 48 kDa

Observed band size: 46 kDa

Exposure time: 20 minutes

The band observed at 46 kDa could potentially be a cleaved form of Rat Endothelin-1 receptor precursor, as the target protein contains a 20 amino acid signal peptide, which when removed gives an expected molecular weight of 46 kDa.



Western blot - Anti-Endothelin A Receptor/ET-A antibody (ab85163)

This image is courtesy of an Abreview submitted by Nico Jentsch

All lanes : Anti-Endothelin A Receptor/ET-A antibody (ab85163) at 1/250 dilution (in 5% BSA + TBS + 0.1% Tween20 for 12 hours at 4°C)

All lanes : Whole tissue lysate of rat lung

Lysates/proteins at 40 µg per lane.

Secondary

All lanes : An HRP-conjugated Goat anti-rabbit IgG polyclonal at 1/1000 dilution

Developed using the ECL technique.

Performed under non-reducing conditions.

Predicted band size: 48 kDa

Observed band size: 48 kDa

Exposure time: 30 seconds

Blocking step: 5% Milk for 1 hour at 23°C

Please note: All products are "FOR RESEARCH USE ONLY. NOT FOR USE IN DIAGNOSTIC PROCEDURES"

Our Abpromise to you: Quality guaranteed and expert technical support

- Replacement or refund for products not performing as stated on the datasheet
- Valid for 12 months from date of delivery
- Response to your inquiry within 24 hours

- We provide support in Chinese, English, French, German, Japanese and Spanish
- Extensive multi-media technical resources to help you
- We investigate all quality concerns to ensure our products perform to the highest standards

If the product does not perform as described on this datasheet, we will offer a refund or replacement. For full details of the Abpromise, please visit <https://www.abcam.cn/abpromise> or contact our technical team.

Terms and conditions

- Guarantee only valid for products bought direct from Abcam or one of our authorized distributors