




# Anti-Endothelin A Receptor/ET-A antibody ab117521

★★★★★ [2 Abreviews](#) [16 References](#) [4 图像](#)

### 概述

产品名称	Anti-Endothelin A Receptor/ET-A抗体
描述	兔多克隆抗体to Endothelin A Receptor/ET-A
宿主	Rabbit
经测试应用	适用于: ICC, WB, IHC-P
种属反应性	与反应: Mouse, Human 预测可用于: Cow, Dog, Pig 
免疫原	Synthetic peptide corresponding to Mouse Endothelin A Receptor/ET-A aa 400-500 (C terminal) conjugated to keyhole limpet haemocyanin. Database link: <a href="#">Q61614</a>  <a href="#">Run BLAST with</a>  <a href="#">Run BLAST with</a>
阳性对照	Mouse dorsal root ganglia; Mouse heart tissue; Endothelin A Receptor/ET-A transfected cells; Mouse heart lysate
常规说明	We have received mixed feedback about mouse cross reactivity, some lot works and some doesn't so we no longer guarantee this species.  The Life Science industry has been in the grips of a reproducibility crisis for a number of years. Abcam is leading the way in addressing this with our range of recombinant monoclonal antibodies and knockout edited cell lines for gold-standard validation. Please check that this product meets your needs before purchasing.  If you have any questions, special requirements or concerns, please send us an inquiry and/or contact our Support team ahead of purchase. Recommended alternatives for this product can be found below, along with publications, customer reviews and Q&As

### 性能

形式	Liquid
存放说明	Shipped at 4°C. Upon delivery aliquot and store at -20°C. Avoid freeze / thaw cycles.
存储溶液	Preservative: 0.02% Sodium azide Constituent: 99% Whole serum
纯度	Whole antiserum
克隆	多克隆

同种型IgG

应用

The Abpromise guarantee **Abpromise™**承诺保证使用ab117521于以下的经测试应用

“应用说明”部分 下显示的仅为推荐的起始稀释度;实际最佳的稀释度/浓度应由使用者检定。

应用	Ab评论	说明
ICC		1/5000.
WB		1/5000. Predicted molecular weight: 49 kDa.
IHC-P	★★★★★ (1)	1/2000.

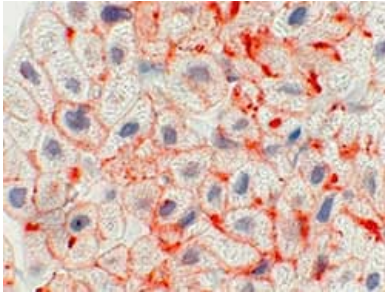
靶标

功能	Receptor for endothelin-1. Mediates its action by association with G proteins that activate a phosphatidylinositol-calcium second messenger system. The rank order of binding affinities for ET-A is: ET1 > ET2 >> ET3.
组织特异性	Isoform 1, isoform 3 and isoform 4 are expressed in a variety of tissues, with highest levels in the aorta and cerebellum, followed by lung, atrium and cerebral cortex, lower levels in the placenta, kidney, adrenal gland, duodenum, colon, ventricle and liver but no expression in umbilical vein endothelial cells. Within the placenta, isoform 1, isoform 2, isoform 3 and isoform 4 are expressed in the villi and stem villi vessels.
序列相似性	Belongs to the G-protein coupled receptor 1 family. Endothelin receptor subfamily. EDNRA sub-subfamily.
细胞定位	Cell membrane.

图片

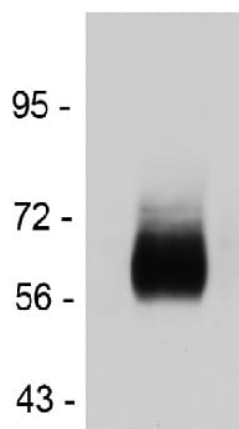


ab117521, at 1/5000 dilution, staining Endothelin A Receptor/ET-A in HEK293 transfected with Endothelin A receptor cells by Immunocytochemistry.



Immunohistochemistry (Formalin/PFA-fixed paraffin-embedded sections) - Anti-Endothelin A Receptor/ET-A antibody (ab117521)

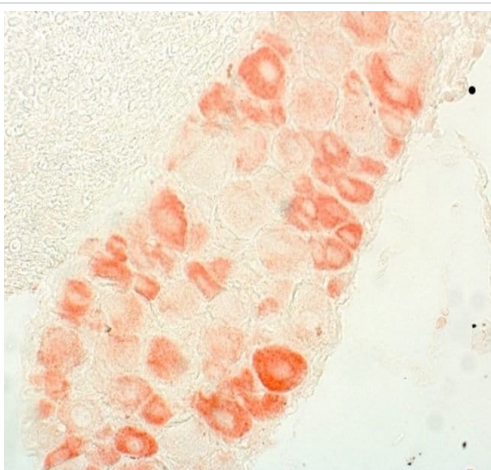
**ab117251**, at 1/2000 dilution, staining Endothelin A Receptor/ET-A in the atrium of mouse heart by Immunohistochemistry.



Western blot - Anti-Endothelin A Receptor/ET-A antibody (ab117521)

Anti-Endothelin A Receptor/ET-A antibody (ab117521) at 1/5000 dilution + Mouse heart lysate

**Predicted band size:** 49 kDa



Immunohistochemistry (Formalin/PFA-fixed paraffin-embedded sections) - Anti-Endothelin A Receptor/ET-A antibody (ab117521)

Immunohistochemistry analysis of mouse dorsal root ganglia labeling Endothelin A Receptor/ET-A with ab117521.

**Please note:** All products are "FOR RESEARCH USE ONLY. NOT FOR USE IN DIAGNOSTIC PROCEDURES"

### **Our Abpromise to you: Quality guaranteed and expert technical support**

---

- Replacement or refund for products not performing as stated on the datasheet
- Valid for 12 months from date of delivery
- Response to your inquiry within 24 hours
  
- We provide support in Chinese, English, French, German, Japanese and Spanish
- Extensive multi-media technical resources to help you
- We investigate all quality concerns to ensure our products perform to the highest standards

If the product does not perform as described on this datasheet, we will offer a refund or replacement. For full details of the Abpromise, please visit <https://www.abcam.cn/abpromise> or contact our technical team.

### **Terms and conditions**

---

- Guarantee only valid for products bought direct from Abcam or one of our authorized distributors