

Anti-Endothelin 1 antibody ab216598

4 图像

概述

产品名称	Anti-Endothelin 1 抗体
描述	兔多克隆抗体 to Endothelin 1
宿主	Rabbit
经测试应用	适用于: IHC-P, WB
种属反应性	与反应: Mouse, Rat 预测可用于: Human 
免疫原	Synthetic peptide aa 1-50 conjugated to keyhole limpet haemocyanin. The exact sequence is proprietary. Database link: P05305
阳性对照	IHC-P: Rat kidney, lung or stomach tissue. WB: Mouse and rat liver tissue lysates
常规说明	<p>The Life Science industry has been in the grips of a reproducibility crisis for a number of years. Abcam is leading the way in addressing this with our range of recombinant monoclonal antibodies and knockout edited cell lines for gold-standard validation. Please check that this product meets your needs before purchasing.</p> <p>If you have any questions, special requirements or concerns, please send us an inquiry and/or contact our Support team ahead of purchase. Recommended alternatives for this product can be found below, along with publications, customer reviews and Q&As</p>

性能

形式	Liquid
存放说明	Shipped at 4°C. Store at +4°C short term (1-2 weeks). Upon delivery aliquot. Store at -20°C long term. Avoid freeze / thaw cycle.
存储溶液	pH: 7.40 Preservative: 0.02% Proclin 300 Constituents: 50% Glycerol (glycerin, glycerine), 1% BSA, 48.98% TBS, 1X
纯度	Protein A purified
克隆	多克隆
同种型	IgG

应用

The Abpromise guarantee **Abpromise™**承诺保证使用ab216598于以下的经测试应用

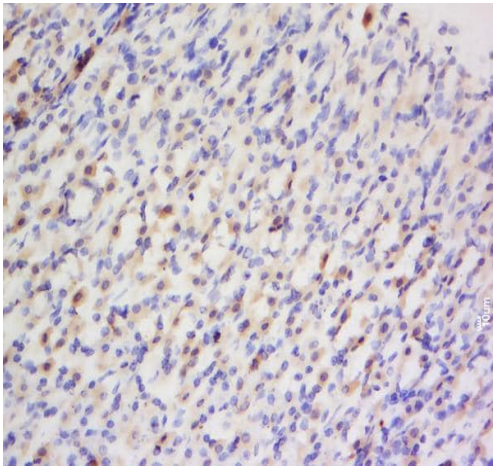
“应用说明”部分 下显示的仅为推荐的起始稀释度;实际最佳的稀释度/浓度应由使用者检定。

应用	Ab评论	说明
IHC-P		1/100 - 1/500.
WB		1/300. Predicted molecular weight: 24 kDa.

靶标

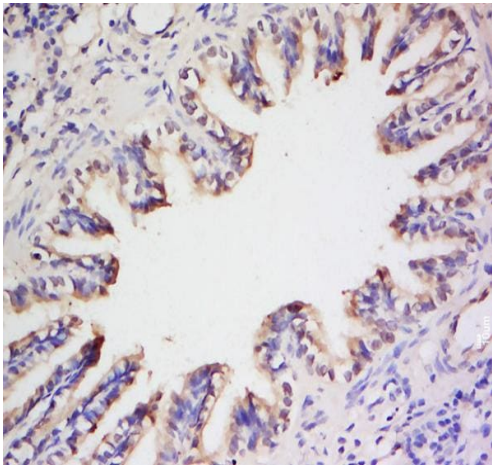
功能	Endothelins are endothelium-derived vasoconstrictor peptides.
组织特异性	Expressed in lung, placental stem villi vessels and in cultured placental vascular smooth muscle cells.
序列相似性	Belongs to the endothelin/sarafotoxin family.
细胞定位	Secreted.

图片



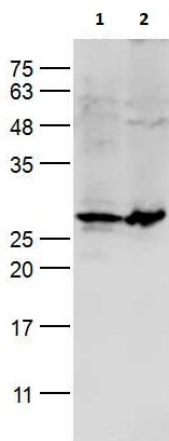
Immunohistochemistry (Formalin/PFA-fixed paraffin-embedded sections) - Anti-Endothelin 1 antibody (ab216598)

Immunohistochemical analysis of formalin-fixed paraffin-embedded sections of rat stomach tissue labeling Endothelin 1 with ab216598 at a 1/200 dilution, followed by conjugation to a secondary antibody and DAB staining.



Immunohistochemical analysis of formalin-fixed paraffin-embedded sections of rat lung tissue labeling Endothelin 1 with ab216598 at a 1/200 dilution, followed by conjugation to a secondary antibody and DAB staining.

Immunohistochemistry (Formalin/PFA-fixed paraffin-embedded sections) - Anti-Endothelin 1 antibody (ab216598)



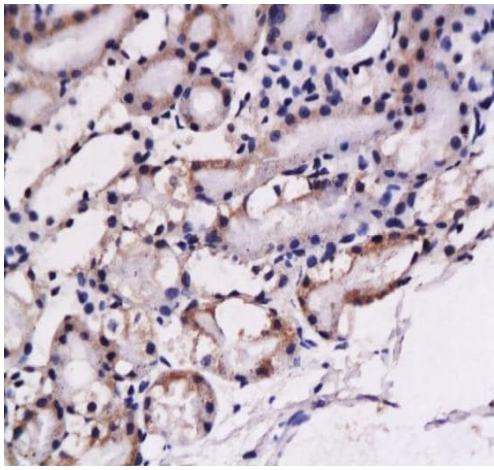
All lanes : Anti-Endothelin 1 antibody (ab216598) at 1/300 dilution

Lane 1 : Mouse liver lysate

Lane 2 : Rat liver lysate

Predicted band size: 24 kDa

Western blot - Anti-Endothelin 1 antibody (ab216598)



Immunohistochemical analysis of formalin-fixed paraffin-embedded sections of rat kidney tissue labeling Endothelin 1 with ab216598 at a 1/200 dilution, followed by conjugation to a secondary antibody and DAB staining.

Immunohistochemistry (Formalin/PFA-fixed paraffin-embedded sections) - Anti-Endothelin 1 antibody (ab216598)

Please note: All products are "FOR RESEARCH USE ONLY. NOT FOR USE IN DIAGNOSTIC PROCEDURES"

Our Abpromise to you: Quality guaranteed and expert technical support

- Replacement or refund for products not performing as stated on the datasheet
- Valid for 12 months from date of delivery
- Response to your inquiry within 24 hours
- We provide support in Chinese, English, French, German, Japanese and Spanish
- Extensive multi-media technical resources to help you
- We investigate all quality concerns to ensure our products perform to the highest standards

If the product does not perform as described on this datasheet, we will offer a refund or replacement. For full details of the Abpromise, please visit <https://www.abcam.cn/abpromise> or contact our technical team.

Terms and conditions

- Guarantee only valid for products bought direct from Abcam or one of our authorized distributors