

Anti-Endothelin 1 antibody ab117757

★★★★★ [1 Abreviews](#) [26 References](#) [3 图像](#)

概述

产品名称	Anti-Endothelin 1抗体
描述	兔多克隆抗体to Endothelin 1
宿主	Rabbit
经测试应用	适用于: IHC-P, WB, ICC
种属反应性	与反应: Mouse, Human
免疫原	Synthetic peptide conjugated to KLH, corresponding to CS-Abu-SSLMDKE-Abu-VYF-Abu-HLDIIW of Mouse Endothelin 1.
阳性对照	WB: HEK-293, HUVEC, HAEC and SK-BR-3 cell lysates IHC-P: Mouse Dorsal root ganglia ICC: A549 cells
常规说明	<p>The Life Science industry has been in the grips of a reproducibility crisis for a number of years. Abcam is leading the way in addressing this with our range of recombinant monoclonal antibodies and knockout edited cell lines for gold-standard validation. Please check that this product meets your needs before purchasing.</p> <p>If you have any questions, special requirements or concerns, please send us an inquiry and/or contact our Support team ahead of purchase. Recommended alternatives for this product can be found below, along with publications, customer reviews and Q&As</p>

性能

形式	Liquid
存放说明	Shipped at 4°C. Upon delivery aliquot and store at -20°C. Avoid freeze / thaw cycles.
存储溶液	Preservative: 0.02% Sodium azide Constituent: Whole serum
纯度	Whole antiserum
克隆	多克隆
同种型	IgG

应用

The Abpromise guarantee

Abpromise™ 承诺保证使用ab117757于以下的经测试应用

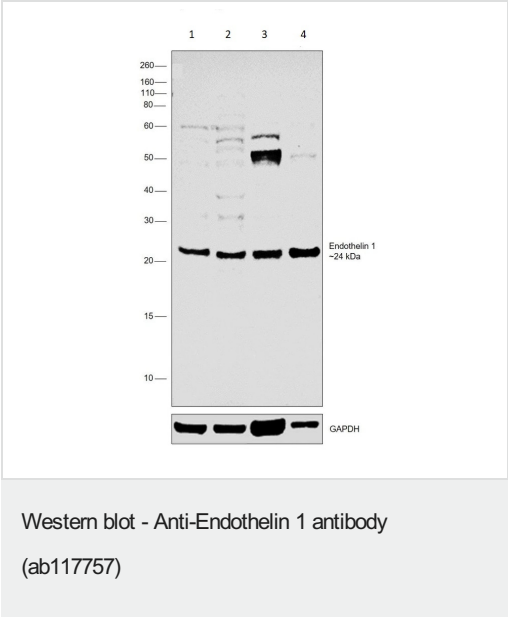
“应用说明”部分 下显示的仅为推荐的起始稀释度;实际最佳的稀释度/浓度应由使用者检定。

应用	Ab评论	说明
IHC-P		1/2000.
WB	★★★★★ (1)	1/3000 - 1/5000. Predicted molecular weight: 24 kDa.
ICC		1/250.

靶标

功能	Endothelins are endothelium-derived vasoconstrictor peptides.
组织特异性	Expressed in lung, placental stem villi vessels and in cultured placental vascular smooth muscle cells.
序列相似性	Belongs to the endothelin/sarafotoxin family.
细胞定位	Secreted.

图片



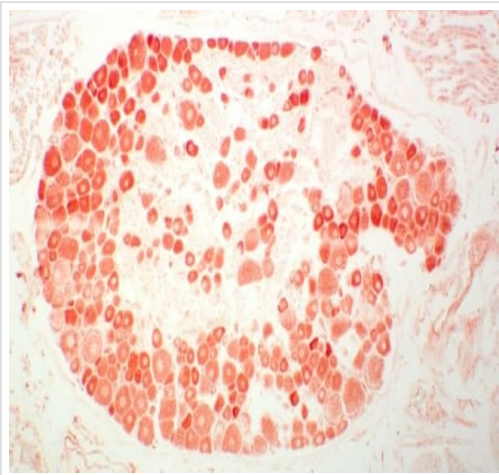
All lanes : Anti-Endothelin 1 antibody (ab117757) at 1/3000 dilution

Lane 1 : HUVEC cell lysate
Lane 2 : HAEC cell lysate
Lane 3 : SK-BR-3 cell lysate
Lane 4 : HEK-293 cell lysate

Lysates/proteins at 30 µg per lane.

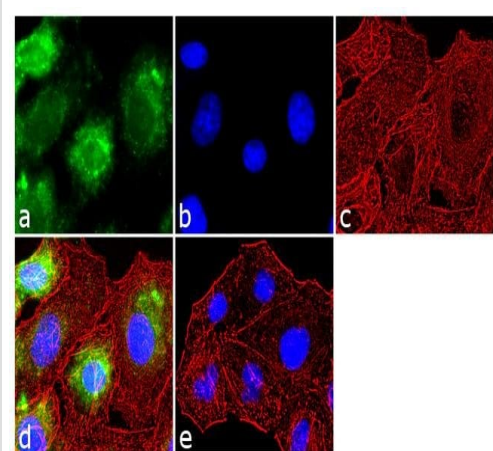
Secondary
All lanes : Goat anti-Rabbit IgG (H+L) Recombinant Secondary Antibody, HRP at 1/4000 dilution

Predicted band size: 24 kDa
Observed band size: 24 kDa



Immunohistochemistry (Formalin/PFA-fixed paraffin-embedded sections) - Anti-Endothelin 1 antibody (ab117757)

ab117757 at 1/2000 dilution staining Endothelin 1 in Mouse Dorsal root ganglia by Immunohistochemistry.



Immunocytochemistry - Anti-Endothelin 1 antibody (ab117757)

Immunocytochemistry analysis of 70% confluent log phase A549 cells labeling Endothelin 1 with ab117757. The cells were fixed with 4% paraformaldehyde for 10 minutes, permeabilized with 0.1% Triton™ X-100 for 10 minutes, and blocked with 1% BSA for 1 hour at room temperature. The cells were labeled with ab117757 at 1/250 dilution in 0.1% BSA and incubated for 3 hours at room temperature and then labeled with Goat anti-Rabbit IgG (H+L) Secondary Antibody, Alexa Fluor® 488 conjugate at a dilution of 1/2000 for 45 minutes at room temperature (Panel a: green). Nuclei (Panel b: blue) were stained with SlowFade® Gold Antifade Mountant with DAPI. F-actin (Panel c: red) was stained with Rhodamine Phalloidin at 1/300. Panel d represents the merged image showing cytoplasmic localization. Panel e shows the no primary antibody control. The images were captured at 60X magnification.

Please note: All products are "FOR RESEARCH USE ONLY. NOT FOR USE IN DIAGNOSTIC PROCEDURES"

Our Abpromise to you: Quality guaranteed and expert technical support

- Replacement or refund for products not performing as stated on the datasheet

- Valid for 12 months from date of delivery
- Response to your inquiry within 24 hours
- We provide support in Chinese, English, French, German, Japanese and Spanish
- Extensive multi-media technical resources to help you
- We investigate all quality concerns to ensure our products perform to the highest standards

If the product does not perform as described on this datasheet, we will offer a refund or replacement. For full details of the Abpromise, please visit <https://www.abcam.cn/abpromise> or contact our technical team.

Terms and conditions

- Guarantee only valid for products bought direct from Abcam or one of our authorized distributors