

Anti-Endothelial Cell antibody [RECA-1] ab9774

★★★★★ [19 Abreviews](#) [103 References](#) [1 图像](#)

概述

| | |
|-------|--|
| 产品名称 | Anti-Endothelial Cell抗体[RECA-1] |
| 描述 | 小鼠单克隆抗体[RECA-1] to Endothelial Cell |
| 宿主 | Mouse |
| 经测试应用 | 适用于: IHC-P |
| 种属反应性 | 与反应: Rat |
| 免疫原 | Tissue, cells or virus. This information is proprietary to Abcam and/or its suppliers. |
| 阳性对照 | Rat brain FFPE section (IHC) |
| 常规说明 | <p>RECA-1 reacts with rat endothelial cell antigen and showed to be reactive with all vascular endothelium in three tested rat strains of different MHC-haplotype; Lewis (TR-11), BN (RT-1n) and OA (RT-1u). RECA-1 recognises a cell surface antigen. The antibody has been successfully applied in staining of viable endothelial cells in vitro, and of vascular endothelium in vivo. No reactivity of RECA-1 was seen with other cells e.g. fibroblasts, leukocytes and non endothelial stromal cells nor with other various tested species other than rat e.g. mouse, rabbit, sheep, goat and human. RECA-1 is a promising antibody for rat endothelial cell studies, and in particular for further defining nature and function of endothelial cell-specific antigens.</p> <p>This antibody clone is manufactured by Abcam. If you require a custom buffer formulation or conjugation for your experiments, please contact orders@abcam.com.</p> <p>The Life Science industry has been in the grips of a reproducibility crisis for a number of years. Abcam is leading the way in addressing this with our range of recombinant monoclonal antibodies and knockout edited cell lines for gold-standard validation. Please check that this product meets your needs before purchasing.</p> <p>If you have any questions, special requirements or concerns, please send us an inquiry and/or contact our Support team ahead of purchase. Recommended alternatives for this product can be found below, along with publications, customer reviews and Q&As</p> |

性能

| | |
|------|--|
| 形式 | Liquid |
| 存放说明 | Shipped at 4°C. Store at +4°C short term (1-2 weeks). Upon delivery aliquot. Store at -20°C long term. |
| 存储溶液 | pH: 7.40 |

| | |
|--------------------|---|
| 纯度 | Preservative: 0.02% Sodium azide Constituents: PBS, 6.97% L-Arginine |
| Primary antibody说明 | Protein G purified RECA-1 reacts with rat endothelial cell antigen and showed to be reactive with all vascular endothelium in three tested rat strains of different MHC-haplotype; Lewis (TR-11), BN (RT-1n) and OA (RT-1u). RECA-1 recognises a cell surface antigen. The antibody has been successfully applied in staining of viable endothelial cells in vitro, and of vascular endothelium in vivo. No reactivity of RECA-1 was seen with other cells e.g. fibroblasts, leukocytes and non endothelial stromal cells nor with other various tested species other than rat e.g. mouse, rabbit, sheep, goat and human. RECA-1 is a promising antibody for rat endothelial cell studies, and in particular for further defining nature and function of endothelial cell-specific antigens. |
| 克隆 | 单克隆 |
| 克隆编号 | RECA-1 |
| 同种型 | IgG1 |

应用

The Abpromise guarantee **Abpromise™**承诺保证使用ab9774于以下的经测试应用

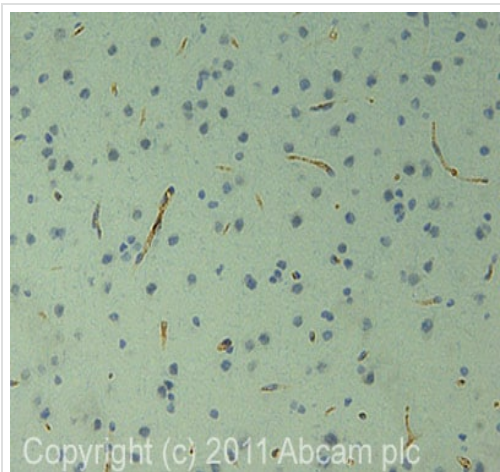
“应用说明”部分 下显示的仅为推荐的起始稀释度;实际最佳的稀释度/浓度应由使用者检定。

| 应用 | Ab评论 | 说明 |
|-------|-----------|----------------------------------|
| IHC-P | ★★★★★ (5) | Use a concentration of 10 µg/ml. |

靶标

| | |
|-----|---|
| 相关性 | <p>The endothelium is a single layer of cells lining various organs and cavities of the body, especially the blood vessels, heart, and lymphatic vessels.Endothelial cells line the entire circulatory system, from the heart to the smallest capillary. Endothelial cells are involved in many aspects of vascular biology, such as vasoconstriction and vasodilation, and hence the control of blood pressure; blood clotting (thrombosis & fibrinolysis); atherosclerosis; formation of new blood vessels (angiogenesis) and inflammation and swelling (oedema). Endothelial cells also control the passage of materials, and the transit of white blood cells, into and out of the bloodstream.</p> |
|-----|---|

图片



Immunohistochemistry (Formalin/PFA-fixed paraffin-embedded sections) - Anti-Endothelial Cell antibody [RECA-1] (ab9774)

IHC image of Endothelial Cell staining in Rat brain FFPE section, performed on a BondTM system using the standard protocol F. The section was pre-treated using heat mediated antigen retrieval with sodium citrate buffer (pH6, epitope retrieval solution 1) for 20 mins. The section was then incubated with ab9774, 5µg/ml, for 15 mins at room temperature and detected using an HRP conjugated compact polymer system. DAB was used as the chromogen. The section was then counterstained with haematoxylin and mounted with DPX

Please note: All products are "FOR RESEARCH USE ONLY. NOT FOR USE IN DIAGNOSTIC PROCEDURES"

Our Abpromise to you: Quality guaranteed and expert technical support

- Replacement or refund for products not performing as stated on the datasheet
- Valid for 12 months from date of delivery
- Response to your inquiry within 24 hours
- We provide support in Chinese, English, French, German, Japanese and Spanish
- Extensive multi-media technical resources to help you
- We investigate all quality concerns to ensure our products perform to the highest standards

If the product does not perform as described on this datasheet, we will offer a refund or replacement. For full details of the Abpromise, please visit <https://www.abcam.cn/abpromise> or contact our technical team.

Terms and conditions

- Guarantee only valid for products bought direct from Abcam or one of our authorized distributors