

Anti-Endostatin/COL18A1 antibody [KT58] ab114141

1 图像

概述	
产品名称	Anti-Endostatin/COL18A1抗体[KT58]
描述	小鼠单克隆抗体[KT58] to Endostatin/COL18A1
宿主	Mouse
经测试应用	适用于: Sandwich ELISA
种属反应性	与反应: Human
免疫原	Recombinant full length protein corresponding to Human Endostatin/COL18A1.
常规说明	<p>The Life Science industry has been in the grips of a reproducibility crisis for a number of years. Abcam is leading the way in addressing this with our range of recombinant monoclonal antibodies and knockout edited cell lines for gold-standard validation. Please check that this product meets your needs before purchasing.</p> <p>If you have any questions, special requirements or concerns, please send us an inquiry and/or contact our Support team ahead of purchase. Recommended alternatives for this product can be found below, along with publications, customer reviews and Q&As</p>
性能	
形式	Liquid
存放说明	Shipped at 4°C. Store at +4°C short term (1-2 weeks). Upon delivery aliquot. Store at -20°C or -80°C. Avoid freeze / thaw cycle.
存储溶液	Preservative: 0.1% Sodium azide Constituent: 99% PBS
纯度	Protein A purified
克隆	单克隆
克隆编号	KT58
同种型	IgG1
应用	

The Abpromise guarantee

Abpromise™承诺保证使用ab114141于以下的经测试应用

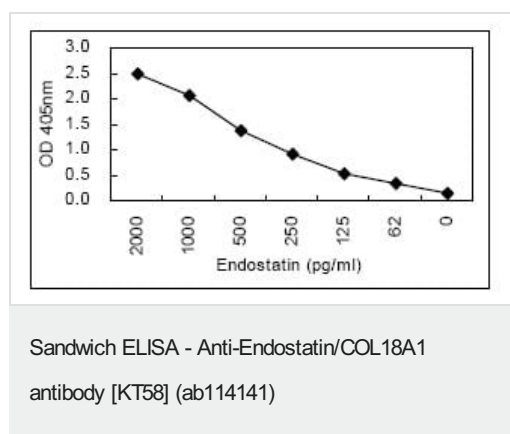
“应用说明”部分 下显示的仅为推荐的起始稀释度;实际最佳的稀释度/浓度应由使用者检定。

应用	Ab评论	说明
Sandwich ELISA		Use a concentration of 5 µg/ml. Can be paired for Sandwich ELISA with HRP Mouse monoclonal [KT60] to Endostatin/COL18A1 (ab106491) . For coating plates.

靶标

功能	COLA18A probably plays a major role in determining the retinal structure as well as in the closure of the neural tube. Endostatin potentially inhibits endothelial cell proliferation and angiogenesis. May inhibit angiogenesis by binding to the heparan sulfate proteoglycans involved in growth factor signaling.
组织特异性	Present in multiple organs with highest levels in liver, lung and kidney.
疾病相关	Defects in COL18A1 are a cause of Knobloch syndrome (KNO) [MIM:267750]. KNO is an autosomal recessive disorder defined by the occurrence of high myopia, vitreoretinal degeneration with retinal detachment, macular abnormalities and occipital encephalocele.
序列相似性	Belongs to the multiplexin collagen family. Contains 1 FZ (frizzled) domain. Contains 1 TSP N-terminal (TSPN) domain.
翻译后修饰	Prolines at the third position of the tripeptide repeating unit (G-X-Y) are hydroxylated in some or all of the chains.
细胞定位	Secreted > extracellular space > extracellular matrix.

图片



ab114141, capturing Human Endostatin/COL18A1 in a Sandwich ELISA.
ab114141 was used at 5 µg/ml to coat the ELISA plates.
Detection utilised **ab106491**, which is an IgG2a monoclonal antibody conjugated to HRP.

Please note: All products are "FOR RESEARCH USE ONLY. NOT FOR USE IN DIAGNOSTIC PROCEDURES"

Our Abpromise to you: Quality guaranteed and expert technical support

- Replacement or refund for products not performing as stated on the datasheet
- Valid for 12 months from date of delivery
- Response to your inquiry within 24 hours

- We provide support in Chinese, English, French, German, Japanese and Spanish
- Extensive multi-media technical resources to help you
- We investigate all quality concerns to ensure our products perform to the highest standards

If the product does not perform as described on this datasheet, we will offer a refund or replacement. For full details of the Abpromise, please visit <https://www.abcam.cn/abpromise> or contact our technical team.

Terms and conditions

- Guarantee only valid for products bought direct from Abcam or one of our authorized distributors