

Anti-Endomucin antibody [V.7C7.1] ab106100

★★★★★ [9 Abreviews](#) [41 References](#) [1 图像](#)

概述

产品名称	Anti-Endomucin抗体[V.7C7.1]
描述	大鼠单克隆抗体[V.7C7.1] to Endomucin
宿主	Rat
经测试应用	适用于: IHC-Fr, IHC-P, IP, Flow Cyt, WB, IHC - Wholmount, ICC/IF 不适用于: FuncS
种属反应性	与反应: Mouse 不与反应: Human
免疫原	Mouse Endomucin-IgG fusion protein
常规说明	<p>The Life Science industry has been in the grips of a reproducibility crisis for a number of years. Abcam is leading the way in addressing this with our range of recombinant monoclonal antibodies and knockout edited cell lines for gold-standard validation. Please check that this product meets your needs before purchasing.</p> <p>If you have any questions, special requirements or concerns, please send us an inquiry and/or contact our Support team ahead of purchase. Recommended alternatives for this product can be found below, along with publications, customer reviews and Q&As</p>

性能

形式	Liquid
存放说明	Shipped at 4°C. Upon delivery aliquot and store at -20°C. Avoid freeze / thaw cycles.
存储溶液	Preservative: 0.02% Sodium azide Constituents: 0.1% BSA, PBS
纯度	Protein G purified
纯化说明	0.2 µm filtered solution
克隆	单克隆
克隆编号	V.7C7.1
同种型	IgG2a

应用

The Abpromise guarantee**Abpromise™**承诺保证使用ab106100于以下的经测试应用

“应用说明”部分 下显示的仅为推荐的起始稀释度;实际最佳的稀释度/浓度应由使用者检定。

应用	Ab评论	说明
IHC-Fr		Use at an assay dependent concentration.
IHC-P	★★★★★ (4)	Use at an assay dependent concentration.
IP		Use at an assay dependent concentration.
Flow Cyt		Use at an assay dependent concentration. ab18450 - Rat monoclonal IgG2a, is suitable for use as an isotype control with this antibody.
WB		Use at an assay dependent concentration.
IHC - Wholemount	★★★★★ (1)	Use at an assay dependent concentration.
ICC/IF		Use a concentration of 1 µg/ml.

应用说明

Is unsuitable for FuncS.

靶标**功能**

Endothelial sialomucin, also called endomucin or mucin-like sialoglycoprotein, which interferes with the assembly of focal adhesion complexes and inhibits interaction between cells and the extracellular matrix.

组织特异性

Expressed in heart, kidney and lung.

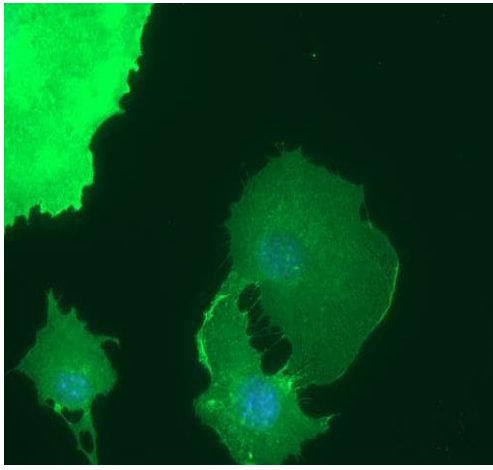
翻译后修饰

Highly O-glycosylated. Sialic acid-rich glycoprotein.

细胞定位

Secreted and Cell membrane. Membrane. Consistently localized to the plasma membrane and less abundantly to Golgi-like perinuclear stacks.

图片



Immuno fluorescence staining of bEND3 cells with ab106100 at a concentration of 1 $\mu\text{g/ml}$.

Immunocytochemistry/ Immunofluorescence - Anti-Endomucin antibody [V.7C7.1] (ab106100)

Please note: All products are "FOR RESEARCH USE ONLY. NOT FOR USE IN DIAGNOSTIC PROCEDURES"

Our Abpromise to you: Quality guaranteed and expert technical support

- Replacement or refund for products not performing as stated on the datasheet
- Valid for 12 months from date of delivery
- Response to your inquiry within 24 hours
- We provide support in Chinese, English, French, German, Japanese and Spanish
- Extensive multi-media technical resources to help you
- We investigate all quality concerns to ensure our products perform to the highest standards

If the product does not perform as described on this datasheet, we will offer a refund or replacement. For full details of the Abpromise, please visit <https://www.abcam.cn/abpromise> or contact our technical team.

Terms and conditions

- Guarantee only valid for products bought direct from Abcam or one of our authorized distributors