

Anti-ENDOD1 antibody ab121293

2 References **5 图像**

概述

产品名称	Anti-ENDOD1抗体
描述	兔多克隆抗体to ENDOD1
宿主	Rabbit
经测试应用	适用于: ICC/IF, IHC-P
种属反应性	与反应: Human
免疫原	antigen sequence, corresponding to amino acids 192-339 of Human ENDOD1.
阳性对照	IHC: Human cerebral cortex, liver and prostate tissue ICC/IF: RT4 cell line
常规说明	<p>The Life Science industry has been in the grips of a reproducibility crisis for a number of years. Abcam is leading the way in addressing this with our range of recombinant monoclonal antibodies and knockout edited cell lines for gold-standard validation. Please check that this product meets your needs before purchasing.</p> <p>If you have any questions, special requirements or concerns, please send us an inquiry and/or contact our Support team ahead of purchase. Recommended alternatives for this product can be found below, along with publications, customer reviews and Q&As</p>

性能

形式	Liquid
存放说明	Shipped at 4°C. Upon delivery aliquot and store at -20°C. Avoid repeated freeze / thaw cycles.
存储溶液	<p>pH: 7.20</p> <p>Preservative: 0.02% Sodium azide</p> <p>Constituents: 59% PBS, 40% Glycerol (glycerin, glycerine)</p>
纯度	Immunogen affinity purified
克隆	多克隆
同种型	IgG

应用

The Abpromise guarantee

Abpromise™承诺保证使用ab121293于以下的经测试应用

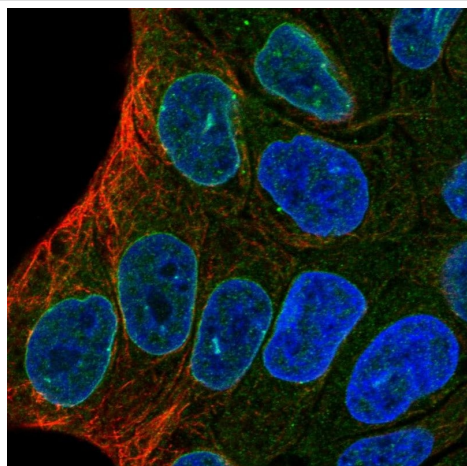
“应用说明”部分 下显示的仅为推荐的起始稀释度;实际最佳的稀释度/浓度应由使用者检定。

应用	Ab评论	说明
ICC/IF		Use a concentration of 0.25 - 2 µg/ml.
IHC-P		1/1000 - 1/2500. Perform heat mediated antigen retrieval with citrate buffer pH 6 before commencing with IHC staining protocol.

靶标

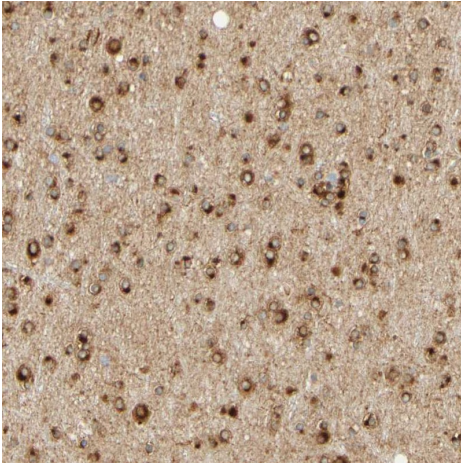
功能	May act as a DNase and a RNase.
序列相似性	Belongs to the DNA/RNA non-specific endonuclease family.
细胞定位	Secreted.

图片



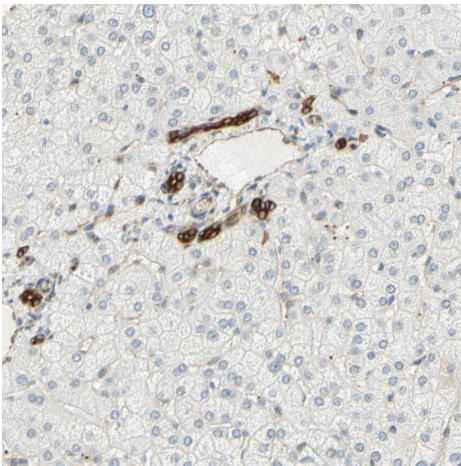
Immunocytochemistry/immunofluorescence analysis of human RT4 cell line labelling ENDOD1 cells with **ab12193** at 2 µg/mL.

Immunocytochemistry/ Immunofluorescence - Anti-ENDOD1 antibody (ab121293)



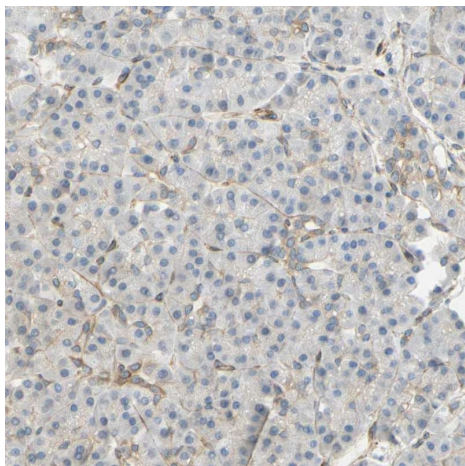
Immunohistochemistry (Formalin/PFA-fixed paraffin-embedded sections) - Anti-ENDOD1 antibody (ab121293)

ab121293 at 1/1100 dilution staining ENDOD1 in Paraffin-embedded Human cerebral cortex tissue by Immunohistochemistry.



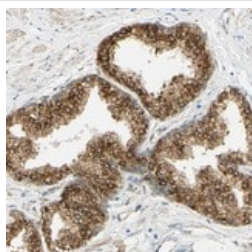
Immunohistochemistry (Formalin/PFA-fixed paraffin-embedded sections) - Anti-ENDOD1 antibody (ab121293)

ab121293 at 1/1100 dilution staining ENDOD1 in Paraffin-embedded Human liver tissue by Immunohistochemistry.



ab121293 at 1/1100 dilution staining ENDOD1 in Paraffin-embedded Human pancreas tissue by Immunohistochemistry.

Immunohistochemistry (Formalin/PFA-fixed paraffin-embedded sections) - Anti-ENDOD1 antibody (ab121293)



ab121293 at 1/1100 dilution staining ENDOD1 in Paraffin-embedded Human Prostate tissue by Immunohistochemistry.

Immunohistochemistry (Formalin/PFA-fixed paraffin-embedded sections) - Anti-ENDOD1 antibody (ab121293)

Please note: All products are "FOR RESEARCH USE ONLY. NOT FOR USE IN DIAGNOSTIC PROCEDURES"

Our Abpromise to you: Quality guaranteed and expert technical support

- Replacement or refund for products not performing as stated on the datasheet
- Valid for 12 months from date of delivery
- Response to your inquiry within 24 hours
- We provide support in Chinese, English, French, German, Japanese and Spanish
- Extensive multi-media technical resources to help you
- We investigate all quality concerns to ensure our products perform to the highest standards

If the product does not perform as described on this datasheet, we will offer a refund or replacement. For full details of the Abpromise, please visit <https://www.abcam.cn/abpromise> or contact our technical team.

Terms and conditions

- Guarantee only valid for products bought direct from Abcam or one of our authorized distributors