

Anti-ENAH/MENA antibody [EPR5660] ab124685

重组 RabMAb

2 References 3 图像

概述	
产品名称	Anti-ENAH/MENA抗体[EPR5660]
描述	兔单克隆抗体[EPR5660] to ENAH/MENA
宿主	Rabbit
经测试应用	适用于: WB, IHC-P 不适用于: ICC/IF or IP
种属反应性	与反应: Human 预测可用于: Mouse 不与反应: Rat
免疫原	Synthetic peptide. This information is proprietary to Abcam and/or its suppliers.
阳性对照	MDA-MB-435, MCF7, HUVEC and A431 cell lysates; Human Uterus tissue.
常规说明	<p>This product is a recombinant monoclonal antibody, which offers several advantages including:</p> <ul style="list-style-type: none"><li>- High batch-to-batch consistency and reproducibility</li><li>- Improved sensitivity and specificity</li><li>- Long-term security of supply</li><li>- Animal-free production</li></ul> <p>For more information <a href="#">see here</a>.</p> <p>Our RabMAb<sup>®</sup> technology is a patented hybridoma-based technology for making rabbit monoclonal antibodies. For details on our patents, please refer to <a href="#">RabMAb<sup>®</sup> patents</a>.</p>
性能	
形式	Liquid
存放说明	Shipped at 4°C. Upon delivery aliquot and store at -20°C. Avoid freeze / thaw cycles.
存储溶液	pH: 7.20 Preservative: 0.05% Sodium azide Constituents: 40% Glycerol (glycerin, glycerine), 9.85% Tris glycine, 50% Tissue culture supernatant
纯度	Protein A purified
克隆	单克隆
克隆编号	EPR5660

同种型

IgG

应用

The Abpromise guarantee

Abpromise™承诺保证使用ab124685于以下的经测试应用

“应用说明”部分 下显示的仅为推荐的起始稀释度;实际最佳的稀释度/浓度应由使用者检定。

应用	Ab评论	说明
WB		1/1000 - 1/10000. Detects a band of approximately 80 kDa (predicted molecular weight: 67 kDa).
IHC-P		1/500 - 1/1000. Perform heat mediated antigen retrieval with citrate buffer pH 6 before commencing with IHC staining protocol. Antigen retrieval is recommended.

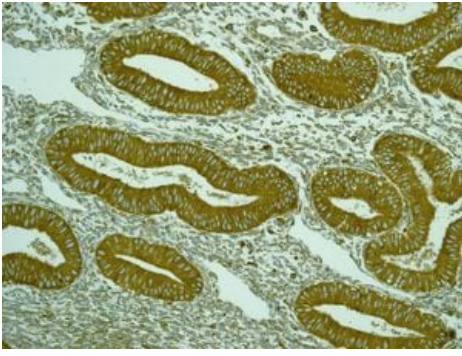
应用说明

Is unsuitable for ICC/IF or IP.

靶标

功能	Ena/VASP proteins are actin-associated proteins involved in a range of processes dependent on cytoskeleton remodeling and cell polarity such as axon guidance and lamellipodial and filopodial dynamics in migrating cells. ENAH induces the formation of F-actin rich outgrowths in fibroblasts. Acts synergistically with BAIAP2-alpha and downstream of NTN1 to promote filipodia formation. Required for the actin-based mobility of Listeria monocytogenes.
组织特异性	Expressed in myoepithelia of parotid, breast, bronchial glands and sweat glands. Expressed in colon-rectum muscularis mucosae epithelium, pancreas acinar ductal epithelium, endometrium epithelium, prostate fibromuscular stroma and placenta vascular media. Overexpressed in a majority of breast cancer cell lines and primary breast tumor lesions.
序列相似性	Belongs to the Ena/VASP family. Contains 1 WH1 domain.
结构域	The EVH2 domain is comprised of 3 regions. Block A is a thymosin-like domain required for G-actin binding. The KLKR motif within this block is essential for the G-actin binding and for actin polymerization. Block B is required for F-actin binding and subcellular location, and Block C for tetramerization.
翻译后修饰	NTN1-induced PKA phosphorylation on Ser-265 directly parallels the formation of filopodial protrusions. Phosphorylated upon DNA damage, probably by ATM or ATR.
细胞定位	Cytoplasm. Cytoplasm > cytoskeleton. Cell projection > lamellipodium. Cell projection > filopodium. Cell junction > synapse. Cell junction > focal adhesion. Targeted to the leading edge of lamellipodia and filopodia by MRL family members. Colocalizes at filopodial tips with a number of other proteins including vinculin and zyxlin. Colocalizes with N-WASP at the leading edge. Colocalizes with GPHN and PFN at synapses.

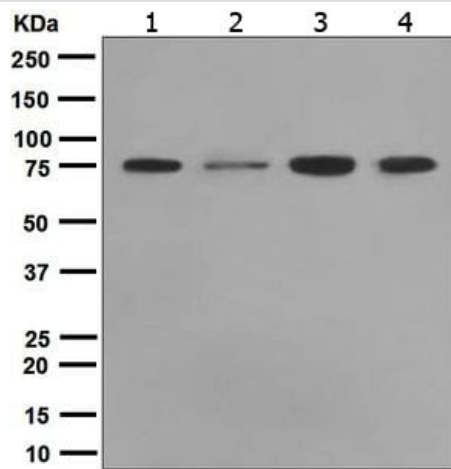
图片



Immunohistochemistry (Formalin/PFA-fixed paraffin-embedded sections) - Anti-ENAH/MENA antibody [EPR5660] (ab124685)

ab124685, at 1/500 dilution, staining ENAH/MENA in formalin-fixed, paraffin-embedded Human uterus tissue, by Immunohistochemistry.

Perform heat mediated antigen retrieval with citrate buffer pH 6 before commencing with IHC staining protocol.



Western blot - Anti-ENAH/MENA antibody [EPR5660] (ab124685)

**All lanes** : Anti-ENAH/MENA antibody [EPR5660] (ab124685) at 1/1000 dilution

**Lane 1** : MDA-MB-435 (Human ductal carcinoma cell line) cell lysate

**Lane 2** : MCF7 cell lysate

**Lane 3** : HUVEC cell lysate

**Lane 4** : A431 cell lysate

Lysates/proteins at 10 µg per lane.

#### Secondary

**All lanes** : Goat anti-rabbit HRP at 1/2000 dilution

**Predicted band size:** 67 kDa

**Observed band size:** 80 kDa

### Why choose a recombinant antibody?



**Research with confidence**  
Consistent and reproducible results



**Long-term and scalable supply**  
Recombinant technology



**Success from the first experiment**  
Confirmed specificity



**Ethical standards compliant**  
Animal-free production

Anti-ENAH/MENA antibody [EPR5660] (ab124685)

**Please note:** All products are "FOR RESEARCH USE ONLY. NOT FOR USE IN DIAGNOSTIC PROCEDURES"

### Our Abpromise to you: Quality guaranteed and expert technical support

---

- Replacement or refund for products not performing as stated on the datasheet
- Valid for 12 months from date of delivery
- Response to your inquiry within 24 hours
- We provide support in Chinese, English, French, German, Japanese and Spanish
- Extensive multi-media technical resources to help you
- We investigate all quality concerns to ensure our products perform to the highest standards

If the product does not perform as described on this datasheet, we will offer a refund or replacement. For full details of the Abpromise, please visit <https://www.abcam.cn/abpromise> or contact our technical team.

### Terms and conditions

---

- Guarantee only valid for products bought direct from Abcam or one of our authorized distributors