


Anti-EML4 antibody ab85834

敲除验证

4 图像

概述	
产品名称	Anti-EML4抗体
描述	兔多克隆抗体to EML4
宿主	Rabbit
经测试应用	适用于: WB, IP, IHC-P
种属反应性	与反应: Human 预测可用于: Gorilla 
免疫原	Synthetic peptide, corresponding to a region within amino acids 931-981 of Human EML4 (NP_061936.2)
阳性对照	HepG2 and HeLa whole cell lysate
常规说明	<p>The Life Science industry has been in the grips of a reproducibility crisis for a number of years. Abcam is leading the way in addressing this with our range of recombinant monoclonal antibodies and knockout edited cell lines for gold-standard validation. Please check that this product meets your needs before purchasing.</p> <p>If you have any questions, special requirements or concerns, please send us an inquiry and/or contact our Support team ahead of purchase. Recommended alternatives for this product can be found below, along with publications, customer reviews and Q&As</p>
性能	
形式	Liquid
存放说明	Shipped at 4°C. Upon delivery aliquot and store at -20°C. Avoid freeze / thaw cycles.
存储溶液	pH: 7 Preservative: 0.09% Sodium azide Constituent: Tris citrate/phosphate
纯度	Immunogen affinity purified
克隆	多克隆
同种型	IgG

应用

The Abpromise guarantee

Abpromise™承诺保证使用ab85834于以下的经测试应用

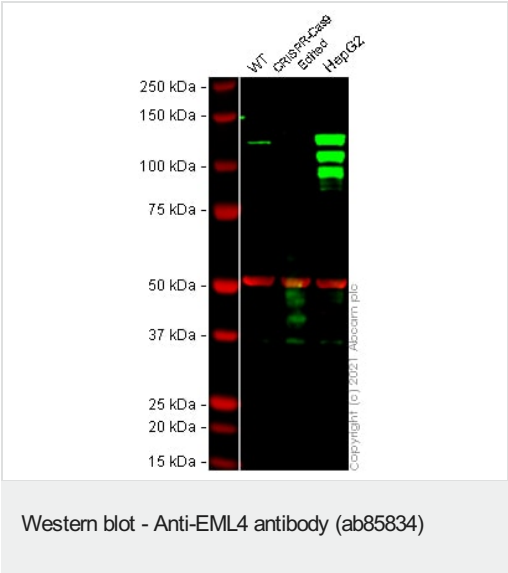
“应用说明”部分 下显示的仅为推荐的起始稀释度;实际最佳的稀释度/浓度应由使用者检定。

应用	Ab评论	说明
WB		1/2000 - 1/10000. Predicted molecular weight: 109 kDa.
IP		Use at 2-5 µg/mg of lysate.
IHC-P		1/500 - 1/2000. Perform heat mediated antigen retrieval with citrate buffer pH 6 before commencing with IHC staining protocol.

靶标

功能	May modify the assembly dynamics of microtubules, such that microtubules are slightly longer, but more dynamic.
序列相似性	Belongs to the WD repeat EMAP family. Contains 9 WD repeats.
发展阶段	Strongly overexpressed during mitosis.
细胞定位	Cytoplasm > cytoskeleton.

图片



All lanes : Anti-EML4 antibody (ab85834) at 1/2000 dilution

- Lane 1 : Wild-type HeLa cell lysate
- Lane 2 : EML4 CRISPR-Cas9 edited HeLa cell lysate
- Lane 3 : HepG2 cell lysate

Lysates/proteins at 20 µg per lane.

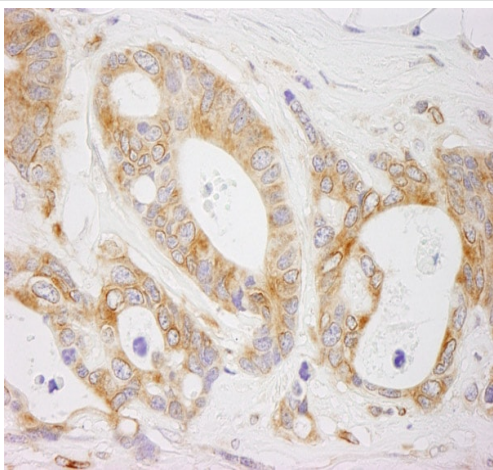
Performed under reducing conditions.

Predicted band size: 109 kDa
Observed band size: 125 kDa

Lanes 1 - 3: Merged signal (red and green). Green - ab85834 observed at 125 kDa. Red - loading control **ab7291** (Mouse anti-Alpha Tubulin [DM1A]) observed at 55 kDa.

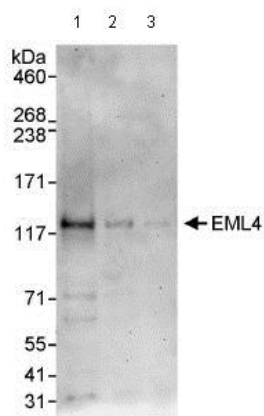
ab85834 was shown to react with EML4 in wild-type HeLa cells in Western blot with loss of signal observed in EML4 CRISPR-Cas9

edited cell line. Wild-type HeLa and EML4 CRISPR-Cas9 edited cell lysates were subjected to SDS-PAGE. Membranes were blocked in 3 % milk in TBS-T (0.1 % Tween®) before incubation with ab85834 and **ab7291** (Mouse anti-Alpha Tubulin [DM1A]) overnight at 4 °C at a 1 in 2000 dilution and a 1 in 20000 dilution respectively. Blots were incubated with Goat anti-Rabbit IgG H&L (IRDye® 800CW) preabsorbed (**ab216773**) and Goat anti-Mouse IgG H&L (IRDye® 680RD) preabsorbed (**ab216776**) secondary antibodies at 1 in 20000 dilution for 1 h at room temperature before imaging.



Immunohistochemistry (Formalin/PFA-fixed paraffin-embedded sections) - Anti-EML4 antibody (ab85834)

Immunohistochemistry (Formalin/PFA-fixed paraffin-embedded sections) analysis of human ovarian carcinoma tissue labelling EML4 with ab85834 at 1/1000 (1µg/ml). Detection: DAB.



Western blot - Anti-EML4 antibody (ab85834)

All lanes : Anti-EML4 antibody (ab85834) at 0.1 µg/ml

Lane 1 : Whole cell lysate from HeLa cells at 50 µg

Lane 2 : Whole cell lysate from HeLa cells at 15 µg

Lane 3 : Whole cell lysate from HeLa cells at 5 µg

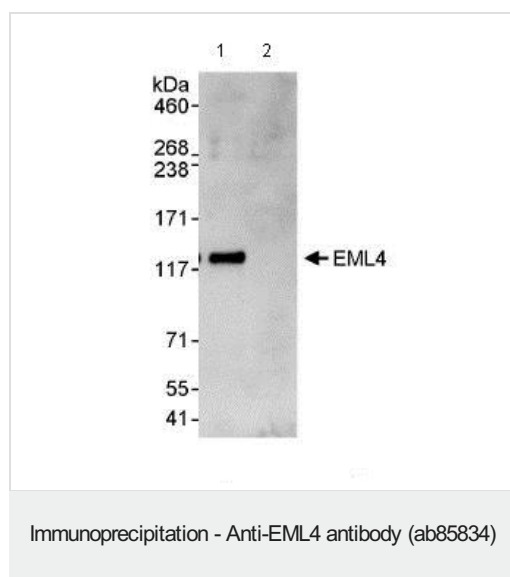
Developed using the ECL technique.

Predicted band size: 109 kDa

Observed band size: 120 kDa

Additional bands at: 31 kDa, 60 kDa, 72 kDa. We are unsure as to the identity of these extra bands.

Exposure time: 3 minutes



Immunoprecipitation/ Western Blot of ab85834

Lane 1: ab85834 at 3 μ g/mg whole cell lysate.

Lane 2: Control IgG.

ab85834 at 0.4 μ g/ml for WB.

Whole cell lysate from Hela cells at 1mg for IP, 20% of IP loaded.

Chemiluminescence with an exposure time of 30 seconds.

Please note: All products are "FOR RESEARCH USE ONLY. NOT FOR USE IN DIAGNOSTIC PROCEDURES"

Our Abpromise to you: Quality guaranteed and expert technical support

- Replacement or refund for products not performing as stated on the datasheet
- Valid for 12 months from date of delivery
- Response to your inquiry within 24 hours
- We provide support in Chinese, English, French, German, Japanese and Spanish
- Extensive multi-media technical resources to help you
- We investigate all quality concerns to ensure our products perform to the highest standards

If the product does not perform as described on this datasheet, we will offer a refund or replacement. For full details of the Abpromise, please visit <https://www.abcam.cn/abpromise> or contact our technical team.

Terms and conditions

- Guarantee only valid for products bought direct from Abcam or one of our authorized distributors