

Anti-ELOVL7 antibody ab106633

[2 References](#) [3 图像](#)

概述

产品名称	Anti-ELOVL7抗体
描述	兔多克隆抗体to ELOVL7
宿主	Rabbit
特异性	ab106633 is predicted not to crossreact with other ELOVL proteins.
经测试应用	适用于: ICC/IF, WB, IHC-P
种属反应性	与反应: Human
免疫原	A 15 amino acid peptide near the amino terminus of Human ELOVL7 (NP_001098028).
阳性对照	Human liver tissue lysate; Human liver tissue
常规说明	<p>The Life Science industry has been in the grips of a reproducibility crisis for a number of years. Abcam is leading the way in addressing this with our range of recombinant monoclonal antibodies and knockout edited cell lines for gold-standard validation. Please check that this product meets your needs before purchasing.</p> <p>If you have any questions, special requirements or concerns, please send us an inquiry and/or contact our Support team ahead of purchase. Recommended alternatives for this product can be found below, along with publications, customer reviews and Q&As</p>

性能

形式	Liquid
存放说明	Shipped at 4°C. Store at 4°C (stable for up to 12 months).
存储溶液	pH: 7.2 Preservative: 0.02% Sodium azide Constituent: PBS
纯度	Immunogen affinity purified
克隆	多克隆
同种型	IgG

应用

The Abpromise guarantee

Abpromise™ 承诺保证使用ab106633于以下的经测试应用

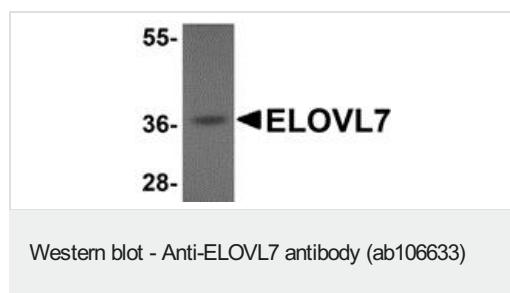
“应用说明”部分 下显示的仅为推荐的起始稀释度;实际最佳的稀释度/浓度应由使用者检定。

应用	Ab评论	说明
ICC/IF		Use a concentration of 20 µg/ml.
WB		Use a concentration of 1 - 2 µg/ml. Predicted molecular weight: 33 kDa.
IHC-P		Use at an assay dependent concentration.

靶标

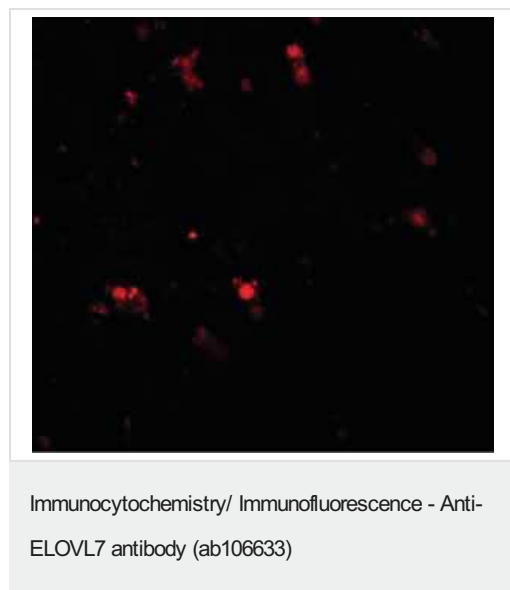
功能	Condensing enzyme that catalyzes the synthesis of saturated and polyunsaturated very long chain fatty acids. Highest activity toward C18 acyl-CoAs, especially C18:3(n-3) acyl-CoAs.
组织特异性	Expressed in most tissues except heart and skeletal muscle.
序列相似性	Belongs to the ELO family.
结构域	The di-lysine motif may confer endoplasmic reticulum localization.
细胞定位	Endoplasmic reticulum membrane.

图片

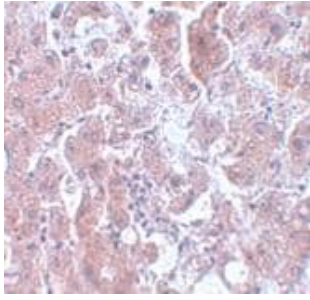


Anti-ELOVL7 antibody (ab106633) at 1 µg/ml + Human liver tissue lysate at 15 µg

Predicted band size: 33 kDa



Immunofluorescence of ELOVL7 in Human liver tissue with ab106633 at 20 µg/mL.



ab106633, at 5 µg/ml, staining ELOVL7 in paraffin embedded Human liver tissue by Immunohistochemistry.

Immunohistochemistry (Formalin/PFA-fixed paraffin-embedded sections) - Anti-ELOVL7 antibody (ab106633)

Please note: All products are "FOR RESEARCH USE ONLY. NOT FOR USE IN DIAGNOSTIC PROCEDURES"

Our Abpromise to you: Quality guaranteed and expert technical support

- Replacement or refund for products not performing as stated on the datasheet
- Valid for 12 months from date of delivery
- Response to your inquiry within 24 hours
- We provide support in Chinese, English, French, German, Japanese and Spanish
- Extensive multi-media technical resources to help you
- We investigate all quality concerns to ensure our products perform to the highest standards

If the product does not perform as described on this datasheet, we will offer a refund or replacement. For full details of the Abpromise, please visit <https://www.abcam.cn/abpromise> or contact our technical team.

Terms and conditions

- Guarantee only valid for products bought direct from Abcam or one of our authorized distributors