

Anti-Elongation factor 1-gamma antibody [EPR7200] ab124994

重组 RabMAb

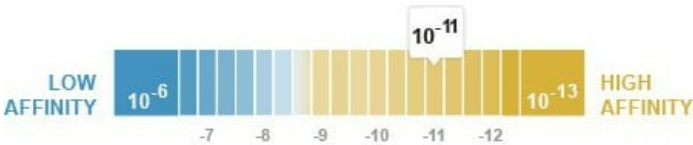
2 References 6 图像

概述

产品名称	Anti-Elongation factor 1-gamma抗体[EPR7200]
描述	兔单克隆抗体[EPR7200] to Elongation factor 1-gamma
宿主	Rabbit
经测试应用	适用于: Flow Cyt (Intra), WB, IHC-P, ICC/IF
种属反应性	与反应: Mouse, Rat, Human
免疫原	Synthetic peptide within Human Elongation factor 1-gamma aa 50-150. The exact sequence is proprietary.
阳性对照	293T, HL60, C6, RAW 264.7, PC12, NIH 3T3, HepG2 and HeLa cell lysates; Human pancreatic adenocarcinoma tissue; HeLa cells.
常规说明	<p>This product is a recombinant monoclonal antibody, which offers several advantages including:</p> <ul style="list-style-type: none"><li>- High batch-to-batch consistency and reproducibility</li><li>- Improved sensitivity and specificity</li><li>- Long-term security of supply</li><li>- Animal-free production</li></ul> <p>For more information <a href="#">see here</a>.</p> <p>Our RabMAb<sup>®</sup> technology is a patented hybridoma-based technology for making rabbit monoclonal antibodies. For details on our patents, please refer to <a href="#">RabMAb<sup>®</sup> patents</a>.</p>

性能

形式	Liquid
存放说明	Shipped at 4°C. Store at -20°C. Stable for 12 months at -20°C.
解离常数 (K <sub>D</sub> )	K <sub>D</sub> = 1.31 x 10 <sup>-11</sup> M



存储溶液	pH: 7.20 Preservative: 0.01% Sodium azide
------	----------------------------------------------

	Constituents: 9% PBS, 40% Glycerol (glycerin, glycerine), 0.05% BSA, 50% Tissue culture supernatant
纯度	Protein A purified
克隆	单克隆
克隆编号	EPR7200
同种型	IgG

应用

The Abpromise guarantee      **Abpromise™** 承诺保证使用ab124994于以下的经测试应用

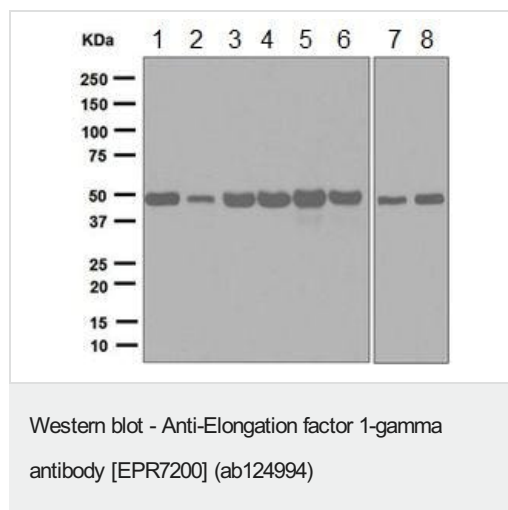
“应用说明”部分 下显示的仅为推荐的起始稀释度;实际最佳的稀释度/浓度应由使用者检定。

应用	Ab评论	说明
Flow Cyt (Intra)		1/1000 - 1/10000. <b>ab172730</b> - Rabbit monoclonal IgG, is suitable for use as an isotype control with this antibody.
WB		1/10000 - 1/50000. Detects a band of approximately 50 kDa (predicted molecular weight: 50 kDa).
IHC-P		1/250 - 1/500. Perform heat mediated antigen retrieval before commencing with IHC staining protocol. Heat up to 98 degrees C, below boiling, and then let cool for 10-20 min.
ICC/IF		1/100 - 1/250.

靶标

功能	Probably plays a role in anchoring the complex to other cellular components.
组织特异性	Highly expressed in pancreatic tumor tissue and to a lesser extent in normal kidney, intestine, pancreas, stomach, lung, brain, spleen and liver.
序列相似性	Contains 1 EF-1-gamma C-terminal domain. Contains 1 GST C-terminal domain. Contains 1 GST N-terminal domain.

图片



**All lanes :** Anti-Elongation factor 1-gamma antibody [EPR7200] (ab124994) at 1/10000 dilution

**Lane 1 :** 293T cell lysate

**Lane 2 :** HL-60 cell lysate

**Lane 3 :** C6 cell lysate

**Lane 4 :** RAW 264.7 cell lysate

**Lane 5 :** PC-12 cell lysate

**Lane 6 :** NIH/3T3 cell lysate

**Lane 7 :** HepG2 cell lysate

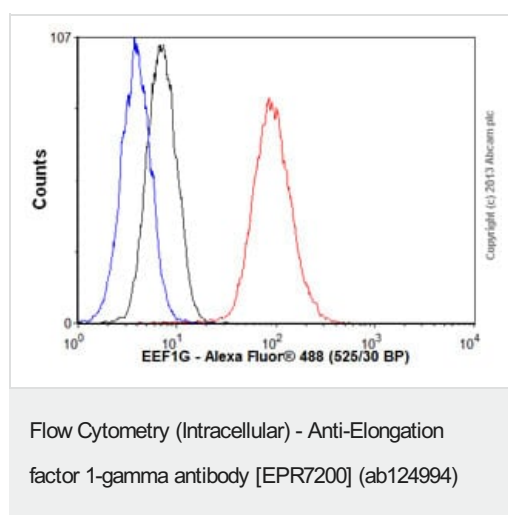
**Lane 8 :** HeLa cell lysate

Lysates/proteins at 10 µg per lane.

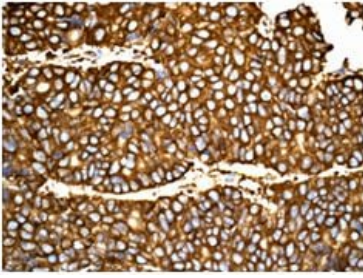
## Secondary

**All lanes :** Goat anti-rabbit HRP-conjugated at 1/2000 dilution

**Predicted band size:** 50 kDa



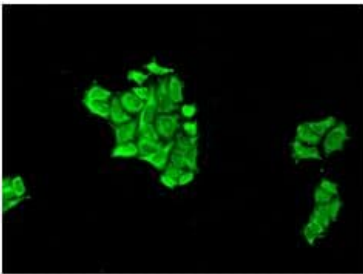
Overlay histogram showing HeLa cells stained with ab124994 (red line). The cells were fixed with 80% methanol (5 min) and then permeabilized with 0.1% PBS-Tween for 20 min. The cells were then incubated in 1x PBS / 10% normal goat serum / 0.3M glycine to block non-specific protein-protein interactions followed by the antibody (ab124994, 1/10000 dilution) for 30 min at 22°C. The secondary antibody used was Alexa Fluor® 488 goat anti-rabbit IgG (H&L) ([ab150077](#)) at 1/2000 dilution for 30 min at 22°C. Isotype control antibody (black line) was rabbit IgG (monoclonal) (0.1µg/1x10<sup>6</sup> cells) used under the same conditions. Unlabelled sample (blue line) was also used as a control. Acquisition of >5,000 events were collected using a 20mW Argon ion laser (488nm) and 525/30 bandpass filter.



Immunohistochemistry (Formalin/PFA-fixed paraffin-embedded sections) - Anti-Elongation factor 1-gamma antibody [EPR7200] (ab124994)

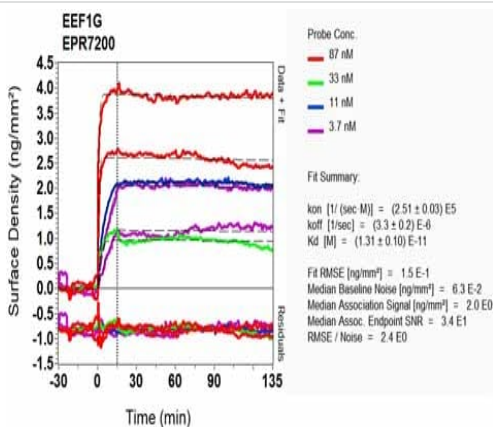
ab124994 at 1/250 dilution staining Elongation factor 1-gamma in paraffin-embedded Human pancreatic adenocarcinoma tissue by Immunohistochemistry.

Perform heat mediated antigen retrieval before commencing with IHC staining protocol.



Immunocytochemistry/ Immunofluorescence - Anti-Elongation factor 1-gamma antibody [EPR7200] (ab124994)

ab124994 at 1/100 dilution staining Elongation factor 1-gamma in HeLa cells by Immunofluorescence.



OIR-D Scanning - Anti-Elongation factor 1-gamma antibody [EPR7200] (ab124994)

Equilibrium disassociation constant ( $K_D$ )

Learn more about  $K_D$

[Click here to learn more about  \$K\_D\$](#)

### Why choose a recombinant antibody?



**Research with confidence**  
Consistent and reproducible results



**Long-term and scalable supply**  
Recombinant technology



**Success from the first experiment**  
Confirmed specificity



**Ethical standards compliant**  
Animal-free production

Anti-Elongation factor 1-gamma antibody [EPR7200]  
(ab124994)

**Please note:** All products are "FOR RESEARCH USE ONLY. NOT FOR USE IN DIAGNOSTIC PROCEDURES"

### Our Abpromise to you: Quality guaranteed and expert technical support

---

- Replacement or refund for products not performing as stated on the datasheet
- Valid for 12 months from date of delivery
- Response to your inquiry within 24 hours
- We provide support in Chinese, English, French, German, Japanese and Spanish
- Extensive multi-media technical resources to help you
- We investigate all quality concerns to ensure our products perform to the highest standards

If the product does not perform as described on this datasheet, we will offer a refund or replacement. For full details of the Abpromise, please visit <https://www.abcam.cn/abpromise> or contact our technical team.

### Terms and conditions

---

- Guarantee only valid for products bought direct from Abcam or one of our authorized distributors