




### Anti-ELMO1 antibody ab2239

★★★★★ [2 Abreviews](#) [12 References](#) [3 图像](#)

#### 概述

产品名称	Anti-ELMO1抗体
描述	山羊多克隆抗体to ELMO1
宿主	Goat
特异性	This antibody is expected to recognise both human isoforms.
经测试应用	<b>适用于:</b> IHC-P, WB
种属反应性	<b>与反应:</b> Mouse, Rat, Human <b>预测可用于:</b> Dog 
免疫原	Synthetic peptide: PKEPSNYDFVYDCN , corresponding to C terminal amino acids 714-727 of Human ELMO1. <a href="#"> Run BLAST with</a> <a href="#"> Run BLAST with</a>
常规说明	<p>The Life Science industry has been in the grips of a reproducibility crisis for a number of years. Abcam is leading the way in addressing this with our range of recombinant monoclonal antibodies and knockout edited cell lines for gold-standard validation. Please check that this product meets your needs before purchasing.</p> <p>If you have any questions, special requirements or concerns, please send us an inquiry and/or contact our Support team ahead of purchase. Recommended alternatives for this product can be found below, along with publications, customer reviews and Q&amp;As</p>

#### 性能

形式	Liquid
存放说明	Shipped at 4°C. Upon delivery aliquot and store at -20°C or -80°C. Avoid repeated freeze / thaw cycles.
存储溶液	pH: 7.30 Preservative: 0.02% Sodium azide Constituents: Tris buffered saline, 0.5% BSA
纯度	Immunogen affinity purified
纯化说明	Purified from goat serum by ammonium sulphate precipitation followed by antigen affinity chromatography using the immunizing peptide.

克隆

多克隆

同种型

IgG

应用

The Abpromise guarantee

Abpromise™承诺保证使用ab2239于以下的经测试应用

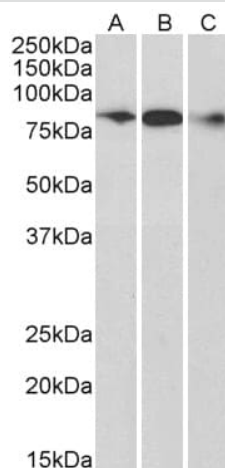
“应用说明”部分 下显示的仅为推荐的起始稀释度;实际最佳的稀释度/浓度应由使用者检定。

应用	Ab评论	说明
IHC-P		Use a concentration of 10 µg/ml. Perform heat mediated antigen retrieval with citrate buffer pH 6 before commencing with IHC staining protocol.
WB	★★★★★ (1)	Use a concentration of 0.1 - 0.3 µg/ml. A 1 hour primary incubation is recommended for this product. Note the smaller isoform of this protein has a consensus glycosylation site, which may explain the higher than expected band size (50 kDa versus 30 kDa).

靶标

功能	Involved in cytoskeletal rearrangements required for phagocytosis of apoptotic cells and cell motility. Acts in association with DOCK1 and CRK. Was initially proposed to be required in complex with DOCK1 to activate Rac Rho small GTPases. May enhance the guanine nucleotide exchange factor (GEF) activity of DOCK1.
组织特异性	Widely expressed, with a higher expression in the spleen and placenta.
序列相似性	Contains 1 ELMO domain. Contains 1 PH domain.
翻译后修饰	Phosphorylated by HCK.
细胞定位	Cytoplasm. Cell membrane. Translocation to plasma membrane seems to be mediated by DOCK1 and CRK.

图片



Western blot - Anti-ELMO1 antibody (ab2239)

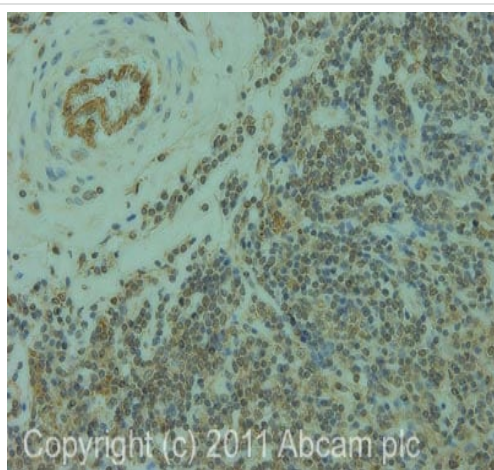
**All lanes :** Anti-ELMO1 antibody (ab2239) at 0.3 µg/ml

**Lane 1 :** Human Frontal Cortex cell lysate (35µg protein in RIPA buffer).

**Lane 2 :** Mouse cell lysate (35µg protein in RIPA buffer).

**Lane 3 :** Rat cell lysate (35µg protein in RIPA buffer).

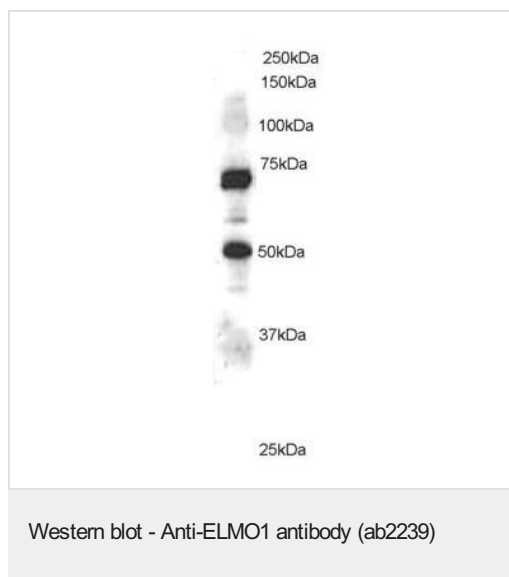
Primary incubation was 1 hour. Detected by chemiluminescence.



Immunohistochemistry (Formalin/PFA-fixed paraffin-embedded sections) - Anti-ELMO1 antibody (ab2239)

IHC image of ab2239 staining in human normal lymphoid formalin fixed paraffin embedded tissue section, performed on a Leica Bond™ system using the standard protocol B. The section was pre-treated using heat mediated antigen retrieval with sodium citrate buffer (pH6, epitope retrieval solution 1) for 20 mins. The section was then incubated with ab2239, 10µg/ml, for 15 mins at room temperature and detected using an HRP conjugated compact polymer system. DAB was used as the chromogen. The section was then counterstained with haematoxylin and mounted with DPX.

For other IHC staining systems (automated and non-automated) customers should optimize variable parameters such as antigen retrieval conditions, primary antibody concentration and antibody incubation times.



Ab2239 staining (1µg/ml) of Jurkat lysate (RIPA buffer, 35µg total protein per lane). Primary incubated for 1 hour. Detected by western blot using chemiluminescence. Ab2239 staining (1µg/ml) of Jurkat lysate (RIPA buffer, 35µg total protein per lane). Primary incubated for 1 hour. Detected by western blot using chemiluminescence.

**Please note:** All products are "FOR RESEARCH USE ONLY. NOT FOR USE IN DIAGNOSTIC PROCEDURES"

### Our Abpromise to you: Quality guaranteed and expert technical support

---

- Replacement or refund for products not performing as stated on the datasheet
- Valid for 12 months from date of delivery
- Response to your inquiry within 24 hours
- We provide support in Chinese, English, French, German, Japanese and Spanish
- Extensive multi-media technical resources to help you
- We investigate all quality concerns to ensure our products perform to the highest standards

If the product does not perform as described on this datasheet, we will offer a refund or replacement. For full details of the Abpromise, please visit <https://www.abcam.cn/abpromise> or contact our technical team.

### Terms and conditions

---

- Guarantee only valid for products bought direct from Abcam or one of our authorized distributors