

Anti-ELAVL2 + ELAVL4 antibody ab72603

★★★★★ [1 Abreviews](#) [2 References](#) [2 图像](#)

概述

产品名称	Anti-ELAVL2 + ELAVL4抗体
描述	兔多克隆抗体to ELAVL2 + ELAVL4
宿主	Rabbit
经测试应用	适用于: WB, ICC/IF
种属反应性	与反应: Human 预测可用于: Mouse, Rat 
免疫原	Synthetic peptide derived from an internal region of human ELAVL2 + ELAVL4.
阳性对照	Extracts from HUVEC cells and Jurkat cells. HepG2 cells.
常规说明	<p>The Life Science industry has been in the grips of a reproducibility crisis for a number of years. Abcam is leading the way in addressing this with our range of recombinant monoclonal antibodies and knockout edited cell lines for gold-standard validation. Please check that this product meets your needs before purchasing.</p> <p>If you have any questions, special requirements or concerns, please send us an inquiry and/or contact our Support team ahead of purchase. Recommended alternatives for this product can be found below, along with publications, customer reviews and Q&As</p>

性能

形式	Liquid
存放说明	Shipped at 4°C. Store at -20°C. Stable for 12 months at -20°C.
存储溶液	<p>pH: 7.40</p> <p>Preservative: 0.02% Sodium azide</p> <p>Constituents: 50% Glycerol (glycerin, glycerine), 0.87% Sodium chloride, PBS</p>
纯度	Without Mg2+ and Ca2+
克隆	Immunogen affinity purified
同种型	多克隆
	IgG

应用

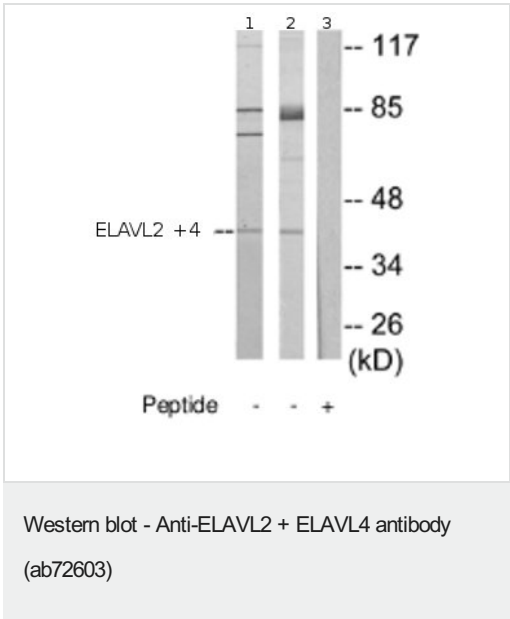
<div> <div>The Abpromise guarantee</div> <div>Abpromise™承诺保证使用ab72603于以下的经测试应用</div> </div> <div>“应用说明”部分 下显示的仅为推荐的起始稀释度;实际最佳的稀释度/浓度应由使用者检定。</div>		
应用	Ab评论	说明
WB		
ICC/IF		

应用说明	<div> <div>ELISA: 1/10000.</div> <div>ICC/IF: 1/500 - 1/1000.</div> <div>WB: 1/500 - 1/1000. Detects a band of approximately 40 kDa (predicted molecular weights: 40 and 42 kDa).</div> </div> <div> <div>Not yet tested in other applications.</div> <div>Optimal dilutions/concentrations should be determined by the end user.</div> </div>
------	--

靶标

相关性	<div> <div>ELAV2 binds RNA and seems to recognize a GAAA motif and is neuronal specific. ELAVL4 may play a role in neuron-specific RNA processing. It contains 3 RNA recognition motif (RRM) domains and is localised to brain tissue. ELAVL4 has been linked with the disease, paraneoplastic encephalomyelitis sensory neuropathy, which is associated with small cell lung cancer and is characterized by dementia, sensory loss, and other neurological disabilities. This disease may result from an immune response primarily directed against a small cell lung tumor antigen which is misdirected against similar antigens expressed in brain (such as ELAVL4).</div> </div>
-----	--

图片



All lanes : Anti-ELAVL2 + ELAVL4 antibody (ab72603) at 1/500 dilution

Lane 1 : Extracts from HUVEC cells

Lane 2 : Extracts from Jurkat cells

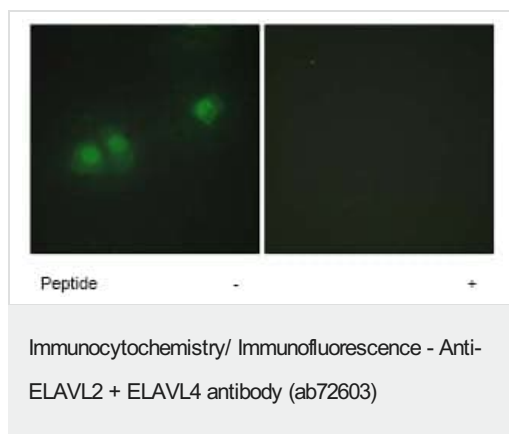
Lane 3 : Extracts from Jurkat cells with immunising peptide at 5 µg

Lysates/proteins at 5 µg per lane.

Predicted band size: 40 , 42 kDa

Observed band size: 40 kDa

Additional bands at: 75 kDa, 80 kDa, 85 kDa. We are unsure as to the identity of these extra bands.



ab72603, at 1/500 dilution, staining HepG2 cells in the absence or presence of the immunising peptide.

Please note: All products are "FOR RESEARCH USE ONLY. NOT FOR USE IN DIAGNOSTIC PROCEDURES"

Our Abpromise to you: Quality guaranteed and expert technical support

- Replacement or refund for products not performing as stated on the datasheet
- Valid for 12 months from date of delivery
- Response to your inquiry within 24 hours
- We provide support in Chinese, English, French, German, Japanese and Spanish
- Extensive multi-media technical resources to help you
- We investigate all quality concerns to ensure our products perform to the highest standards

If the product does not perform as described on this datasheet, we will offer a refund or replacement. For full details of the Abpromise, please visit <https://www.abcam.cn/abpromise> or contact our technical team.

Terms and conditions

- Guarantee only valid for products bought direct from Abcam or one of our authorized distributors