


Anti-eIF4EBP1 (phospho T36) antibody ab47365

7 References 3 图像

概述	
产品名称	Anti-eIF4EBP1 (phospho T36)抗体
描述	兔多克隆抗体to eIF4EBP1 (phospho T36)
宿主	Rabbit
特异性	ab47365 detects endogenous levels of 4E-BP1 only when phosphorylated at threonine 36. This antibody may cross-react with 4E-BP2 and 4E-BP3 when phosphorylated at equivalent sites.
经测试应用	适用于: ICC/IF, WB, IHC-P
种属反应性	与反应: Human 预测可用于: Mouse, Rat 
免疫原	Synthetic peptide corresponding to Human eIF4EBP1 aa 1-100 (phospho T36). Database link: Q13541
阳性对照	MDA-MB-435 cell extracts; Human breast carcinoma tissue
常规说明	<p>The Life Science industry has been in the grips of a reproducibility crisis for a number of years. Abcam is leading the way in addressing this with our range of recombinant monoclonal antibodies and knockout edited cell lines for gold-standard validation. Please check that this product meets your needs before purchasing.</p> <p>If you have any questions, special requirements or concerns, please send us an inquiry and/or contact our Support team ahead of purchase. Recommended alternatives for this product can be found below, along with publications, customer reviews and Q&As</p>
性能	
形式	Liquid
存放说明	Shipped at 4°C. Store at -20°C. Stable for 12 months at -20°C.
存储溶液	pH: 7.40 Preservative: 0.02% Sodium azide Constituents: PBS, 50% Glycerol, 0.87% Sodium chloride Without Mg+2 and Ca+2
纯度	Immunogen affinity purified
纯化说明	The antibody was affinity-purified from rabbit antiserum by affinity chromatography using epitope-specific phosphopeptide. The antibody against non-phosphopeptide was removed by

chromatography using non-phosphopeptide corresponding to the phosphorylation site.

克隆

多克隆

同种型

IgG

应用

The Abpromise guarantee

Abpromise™ 承诺保证使用ab47365于以下的经测试应用

“应用说明”部分 下显示的仅为推荐的起始稀释度;实际最佳的稀释度/浓度应由使用者检定。

应用	Ab评论	说明
ICC/IF		Use a concentration of 1 - 5 µg/ml.
WB		1/500 - 1/1000. Detects a band of approximately 20 kDa (predicted molecular weight: 13 kDa).
IHC-P		Use at an assay dependent concentration.

靶标

功能

Regulates eIF4E activity by preventing its assembly into the eIF4F complex. Mediates the regulation of protein translation by hormones, growth factors and other stimuli that signal through the MAP kinase and mTORC1 pathways.

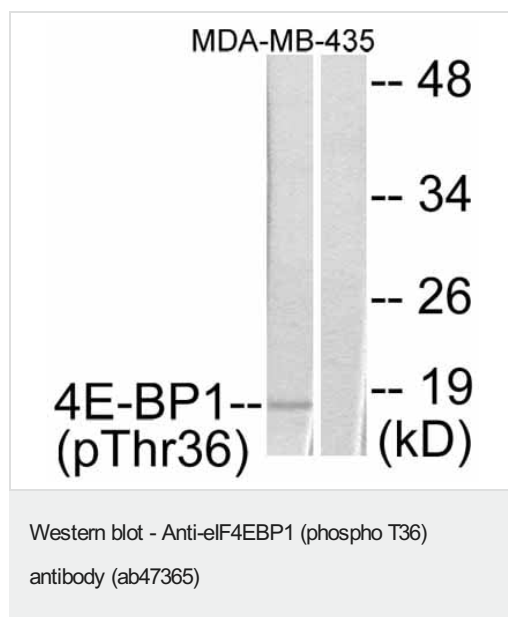
序列相似性

Belongs to the eIF4E-binding protein family.

翻译后修饰

Phosphorylated on serine and threonine residues in response to insulin, EGF and PDGF. Phosphorylation at Thr-37, Thr-46, Ser-65 and Thr-70 is regulated by mTORC1. Phosphorylated upon DNA damage, probably by ATM or ATR.

图片

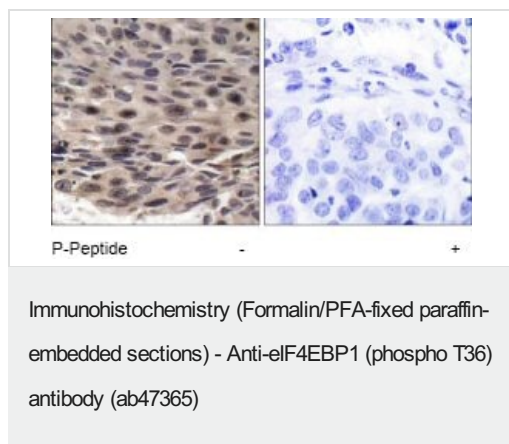


All lanes : Anti-eIF4EBP1 (phospho T36) antibody (ab47365)

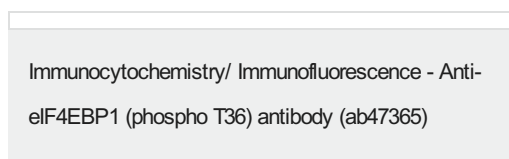
Lane 1 : MDA-MB-435 cells, treated with EGF (200 ng/ml, 30min)

Lane 2 : MDA-MB-435 cells, untreated

Predicted band size: 13 kDa



Immunohistochemical analysis of paraffin-embedded human breast carcinoma tissue using ab47365. Left image without immunising peptide treatment; right image with immunising peptide treatment.



ICC/IF image of ab47365 stained Hek293 cells. The cells were 100% methanol fixed (5 min) and then incubated in 1%BSA / 10% normal goat serum / 0.3M glycine in 0.1% PBS-Tween for 1h to permeabilise the cells and block non-specific protein-protein interactions. The cells were then incubated with the antibody (ab47365, 1µg/ml) overnight at +4°C. The secondary antibody (green) was Alexa Fluor® 488 goat anti-rabbit IgG (H+L) used at a 1/1000 dilution for 1h. Alexa Fluor® 594 WGA was used to label plasma membranes (red) at a 1/200 dilution for 1h. DAPI was used to stain the cell nuclei (blue) at a concentration of 1.43µM.

Please note: All products are "FOR RESEARCH USE ONLY. NOT FOR USE IN DIAGNOSTIC PROCEDURES"

Our Abpromise to you: Quality guaranteed and expert technical support

- Replacement or refund for products not performing as stated on the datasheet
- Valid for 12 months from date of delivery
- Response to your inquiry within 24 hours
- We provide support in Chinese, English, French, German, Japanese and Spanish
- Extensive multi-media technical resources to help you
- We investigate all quality concerns to ensure our products perform to the highest standards

If the product does not perform as described on this datasheet, we will offer a refund or replacement. For full details of the Abpromise, please visit <https://www.abcam.cn/abpromise> or contact our technical team.

Terms and conditions

- Guarantee only valid for products bought direct from Abcam or one of our authorized distributors