

Anti-eIF4EBP1 antibody [Y330] ab32130

敲除验证 重组 RabMAb

9 References 6 图像

概述	
产品名称	Anti-eIF4EBP1抗体[Y330]
描述	兔单克隆抗体[Y330] to eIF4EBP1
宿主	Rabbit
特异性	ab32130 recognises 4E-BP1 (eIF4E-binding protein) also known as PHAS.
经测试应用	适用于: WB, IHC-P, Flow Cyt (Intra) 不适用于: ICC/IF
种属反应性	与反应: Human
免疫原	Synthetic peptide. This information is proprietary to Abcam and/or its suppliers.
阳性对照	WB: HeLa, HEK-293 cell lysate, HAP1 and K562 cell lysate, IHC-P: Human prostate carcinoma, Flow Cyt (intra): HeLa cells
常规说明	<p>This product is a recombinant monoclonal antibody, which offers several advantages including:</p> <ul style="list-style-type: none">- High batch-to-batch consistency and reproducibility- Improved sensitivity and specificity- Long-term security of supply- Animal-free production <p>For more information see here.</p> <p>Our RabMAb[®] technology is a patented hybridoma-based technology for making rabbit monoclonal antibodies. For details on our patents, please refer to RabMAb[®] patents.</p> <p>Mouse, Rat: We have preliminary internal testing data to indicate this antibody may not react with these species. Please contact us for more information.</p>
性能	
形式	Liquid
存放说明	Shipped at 4°C. Upon delivery aliquot and store at -20°C. Avoid freeze / thaw cycles.
存储溶液	pH: 7.20 Preservative: 0.01% Sodium azide Constituents: 49% PBS, 50% Glycerol (glycerin, glycerine), 0.05% BSA
纯度	Protein A purified

克隆	单克隆
克隆编号	Y330
同种型	IgG

应用

The Abpromise guarantee **Abpromise™承诺保证使用ab32130于以下的经测试应用**

“应用说明”部分下显示的仅为推荐的起始稀释度；实际最佳的稀释度/浓度应由使用者检定。

应用	Ab评论	说明
WB		1/1000. Detects a band of approximately 15-20 kDa (predicted molecular weight: 12 kDa).
IHC-P		Use at an assay dependent concentration. Perform heat mediated antigen retrieval with citrate buffer pH 6 before commencing with IHC staining protocol.
Flow Cyt (Intra)		1/1000.

应用说明 Is unsuitable for ICC/IF.

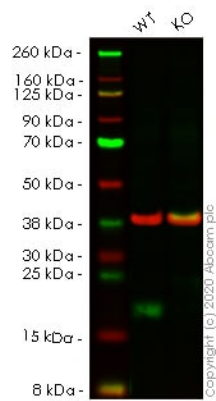
靶标

功能	Regulates eIF4E activity by preventing its assembly into the eIF4F complex. Mediates the regulation of protein translation by hormones, growth factors and other stimuli that signal through the MAP kinase and mTORC1 pathways.
----	--

序列相似性 Belongs to the eIF4E-binding protein family.

翻译后修饰	Phosphorylated on serine and threonine residues in response to insulin, EGF and PDGF. Phosphorylation at Thr-37, Thr-46, Ser-65 and Thr-70 is regulated by mTORC1. Phosphorylated upon DNA damage, probably by ATM or ATR.
-------	--

图片



Western blot - Anti-eIF4EBP1 antibody [Y330]
(ab32130)

All lanes : Anti-eIF4EBP1 antibody [Y330] (ab32130) at 1/1000 dilution

Lane 1 : Wild-type HeLa cell lysate

Lane 2 : EIF4EBP1 knockout HeLa cell lysate

Lysates/proteins at 20 µg per lane.

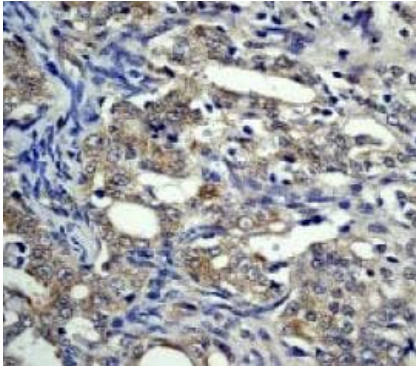
Performed under reducing conditions.

Predicted band size: 12 kDa

Observed band size: 13 kDa

Lanes 1-2: Merged signal (red and green). Green - ab32130 observed at 13 kDa. Red - loading control **ab8245** observed at 37 kDa.

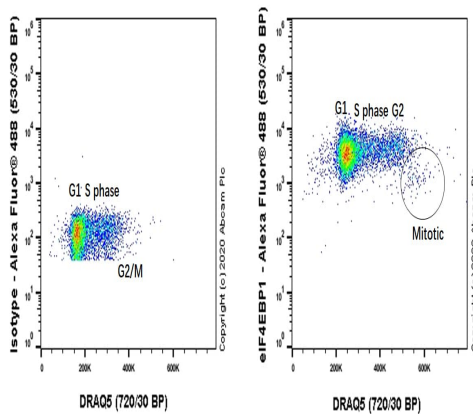
ab32130 Anti-eIF4EBP1 antibody [Y330] was shown to specifically react with eIF4EBP1 in wild-type HeLa cells. Loss of signal was observed when knockout cell line **ab264784** (knockout cell lysate **ab257146**) was used. Wild-type and eIF4EBP1 knockout samples were subjected to SDS-PAGE. ab32130 and Anti-GAPDH antibody [6C5] - Loading Control (**ab8245**) were incubated overnight at 4°C at 1 in 1000 Dilution and 1 in 20000 dilution respectively. Blots were developed with Goat anti-Rabbit IgG H&L (IRDye® 800CW) preadsorbed (**ab216773**) and Goat anti-Mouse IgG H&L (IRDye® 680RD) preadsorbed (**ab216776**) secondary antibodies at 1 in 20000 dilution for 1 hour at room temperature before imaging.



Immunohistochemistry (Formalin/PFA-fixed paraffin-embedded sections) - Anti-eIF4EBP1 antibody [Y330] (ab32130)

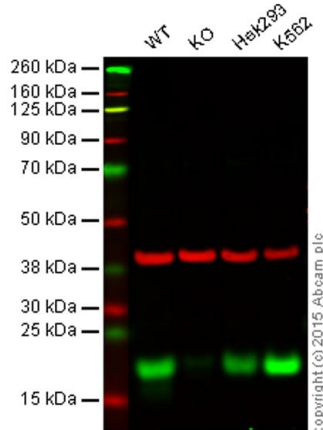
ab32130, staining human prostate carcinoma by immunohistochemistry, Paraffin embedded tissue

Perform heat mediated antigen retrieval with citrate buffer pH 6 before commencing with IHC staining protocol.



Flow Cytometry (Intracellular) - Anti-eIF4EBP1 antibody [Y330] (ab32130)

Flow Cytometry analysis of HeLa (Human cervix adenocarcinoma epithelial cell) cells labeling eIF4EBP1 with purified ab32130 at 1/1000 dilution (1 µg/mL) (Red). Cells were fixed with 4% Paraformaldehyde and permeabilised with 90% Methanol. A Goat anti rabbit IgG (Alexa Fluor® 488, [ab150077](#)) secondary antibody was used at 1/2000. Isotype control - Rabbit monoclonal IgG (Left). Low expression in mitotic phase was consistent with literature. (PMID: 11553333)



Western blot - Anti-eIF4EBP1 antibody [Y330] (ab32130)

All lanes : Anti-eIF4EBP1 antibody [Y330] (ab32130) at 1/1000 dilution

Lane 1 : Wild-type HAP1 cell lysate

Lane 2 : eIF4EBP1 knockout HAP1 cell lysate

Lane 3 : Hek293 cell lysate

Lane 4 : K562 cell lysate

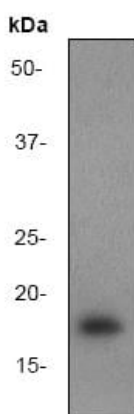
Lysates/proteins at 20 µg per lane.

Predicted band size: 12 kDa

Lanes 1 -4: Merged signal (red and green). Green - ab32130 observed at 20 kDa. Red - loading control, [ab8245](#), observed at 37

kDa.

ab32130 was shown to specifically react with eIF4EBP1 when eIF4EBP1 knockout samples were used. Wild-type and eIF4EBP1 knockout samples were subjected to SDS-PAGE. ab32130 and **ab8245** (loading control to GAPDH) were diluted 1/1000 and 1/2000 respectively and incubated overnight at 4°C. Blots were developed with Goat anti-Rabbit IgG H&L (IRDye® 800CW) preadsorbed (**ab216773**) and Goat anti-Mouse IgG H&L (IRDye® 680RD) preadsorbed (**ab216776**) secondary antibodies at 1/10000 dilution for 1 h at room temperature before imaging.



Western blot - Anti-eIF4EBP1 antibody [Y330] (ab32130)

Anti-eIF4EBP1 antibody [Y330] (ab32130) at 1/1000 dilution + K562 cell lysate

Predicted band size: 12 kDa

Observed band size: 18 kDa

Why choose a recombinant antibody?



Research with confidence
Consistent and reproducible results



Long-term and scalable supply
Recombinant technology



Success from the first experiment
Confirmed specificity



Ethical standards compliant
Animal-free production

Anti-eIF4EBP1 antibody [Y330] (ab32130)

Please note: All products are "FOR RESEARCH USE ONLY. NOT FOR USE IN DIAGNOSTIC PROCEDURES"

Our Abpromise to you: Quality guaranteed and expert technical support

-
- Replacement or refund for products not performing as stated on the datasheet
 - Valid for 12 months from date of delivery
 - Response to your inquiry within 24 hours

 - We provide support in Chinese, English, French, German, Japanese and Spanish
 - Extensive multi-media technical resources to help you
 - We investigate all quality concerns to ensure our products perform to the highest standards

If the product does not perform as described on this datasheet, we will offer a refund or replacement. For full details of the Abpromise, please visit <https://www.abcam.cn/abpromise> or contact our technical team.

Terms and conditions

- Guarantee only valid for products bought direct from Abcam or one of our authorized distributors