


Anti-eIF4E antibody ab72116

2 图像

概述	
产品名称	Anti-eIF4E抗体
描述	兔多克隆抗体to eIF4E
宿主	Rabbit
经测试应用	适用于: IP, WB
种属反应性	与反应: Mouse, Human 预测可用于: Rabbit, Guinea pig, Cow, Pig, Chimpanzee, Rhesus monkey, Elephant 
免疫原	Synthetic peptide corresponding to a region between residue 1 and 50 of human eIF4E (NP_001959.1).
阳性对照	HeLa whole cell lysate.
常规说明	<p>The Life Science industry has been in the grips of a reproducibility crisis for a number of years. Abcam is leading the way in addressing this with our range of recombinant monoclonal antibodies and knockout edited cell lines for gold-standard validation. Please check that this product meets your needs before purchasing.</p> <p>If you have any questions, special requirements or concerns, please send us an inquiry and/or contact our Support team ahead of purchase. Recommended alternatives for this product can be found below, along with publications, customer reviews and Q&amp;As</p>
性能	
形式	Liquid
存放说明	Shipped at 4°C. Upon delivery aliquot and store at -20°C. Avoid freeze / thaw cycles.
存储溶液	pH: 7 Preservative: 0.09% Sodium azide Constituents: 1.815% Tris, 1.764% Sodium citrate, 0.021% PBS
纯度	Immunogen affinity purified
纯化说明	ab72116 was affinity purified using an epitope specific to eIF4E immobilized on solid support.
克隆	多克隆
同种型	IgG

**The Abpromise guarantee**      **Abpromise™**承诺保证使用ab72116于以下的经测试应用

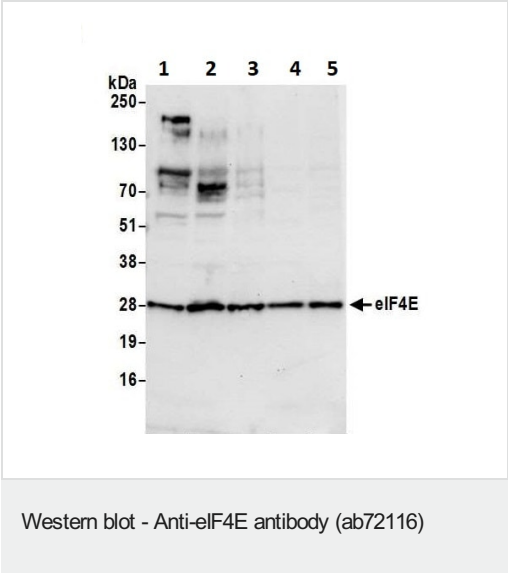
“应用说明”部分 下显示的仅为推荐的起始稀释度;实际最佳的稀释度/浓度应由使用者检定。

应用	Ab评论	说明
IP		Use at 2-5 µg/mg of lysate.
WB		Use at an assay dependent concentration. Predicted molecular weight: 25 kDa.

靶标

功能	Its translation stimulation activity is repressed by binding to the complex CYFIP1-FMR1 (By similarity). Recognizes and binds the 7-methylguanosine-containing mRNA cap during an early step in the initiation of protein synthesis and facilitates ribosome binding by inducing the unwinding of the mRNAs secondary structures. Component of the CYFIP1-EIF4E-FMR1 complex which binds to the mRNA cap and mediates translational repression. In the CYFIP1-EIF4E-FMR1 complex this subunit mediates the binding to the mRNA cap.
序列相似性	Belongs to the eukaryotic initiation factor 4E family.
翻译后修饰	Phosphorylation increases the ability of the protein to bind to mRNA caps and to form the eIF4F complex.

图片



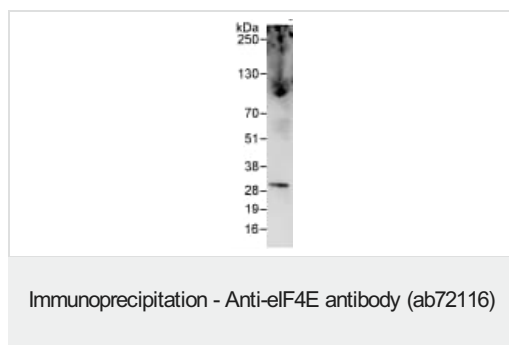
**All lanes :** Anti-eIF4E antibody (ab72116) at 0.1 µg/ml

- Lane 1 :** HeLa cell lysate
- Lane 2 :** HEK293T cell lysate
- Lane 3 :** Jurkat cell lysate
- Lane 4 :** TCMK-1 cell lysate
- Lane 5 :** NIH3T3 cell lysate

**Predicted band size:** 25 kDa

Detection: Chemiluminescence with an exposure time of 10 seconds.

[Previous](#)



Detection of eIF4E by Western Blot of Immunoprecipitate.  
anti-eIF4E at 1 µg/ml staining eIF4E in HeLa whole cell lysate  
immunoprecipitated using ab72116 at 3 µg/mg lysate (1 mg/IP; 20%  
of IP loaded/lane).  
Detection: Chemiluminescence with exposure time of 3 seconds.

**Please note:** All products are "FOR RESEARCH USE ONLY. NOT FOR USE IN DIAGNOSTIC PROCEDURES"

### Our Abpromise to you: Quality guaranteed and expert technical support

---

- Replacement or refund for products not performing as stated on the datasheet
- Valid for 12 months from date of delivery
- Response to your inquiry within 24 hours
- We provide support in Chinese, English, French, German, Japanese and Spanish
- Extensive multi-media technical resources to help you
- We investigate all quality concerns to ensure our products perform to the highest standards

If the product does not perform as described on this datasheet, we will offer a refund or replacement. For full details of the Abpromise, please visit <https://www.abcam.cn/abpromise> or contact our technical team.

### Terms and conditions

---

- Guarantee only valid for products bought direct from Abcam or one of our authorized distributors