


Anti-EIF3C antibody ab19360

2 图像

概述	
产品名称	Anti-EIF3C抗体
描述	兔多克隆抗体to EIF3C
宿主	Rabbit
经测试应用	适用于: WB, IP
种属反应性	与反应: Human 预测可用于: Rat, Cow, Orangutan 
免疫原	Synthetic peptide corresponding to Human EIF3C aa 850-913 (C terminal).
阳性对照	WB: HeLa and HEK293T cell lysates IP: HEK293T cell lysate.
常规说明	<p>The Life Science industry has been in the grips of a reproducibility crisis for a number of years. Abcam is leading the way in addressing this with our range of recombinant monoclonal antibodies and knockout edited cell lines for gold-standard validation. Please check that this product meets your needs before purchasing.</p> <p>If you have any questions, special requirements or concerns, please send us an inquiry and/or contact our Support team ahead of purchase. Recommended alternatives for this product can be found below, along with publications, customer reviews and Q&As</p>
性能	
形式	Liquid
存放说明	Shipped at 4°C. Upon delivery aliquot and store at -20°C. Avoid freeze / thaw cycles.
存储溶液	pH: 7 Preservative: 0.09% Sodium azide Constituents: 0.021% PBS, 1.764% Sodium citrate, 1.815% Tris
纯度	Immunogen affinity purified
克隆	多克隆
同种型	IgG
应用	

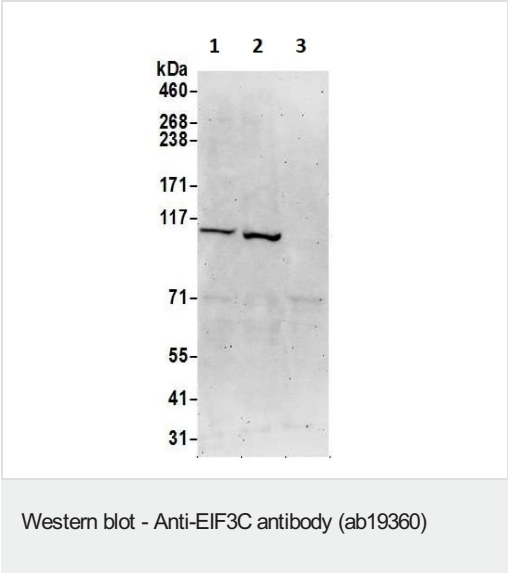
“应用说明”部分 下显示的仅为推荐的起始稀释度;实际最佳的稀释度/浓度应由使用者检定。

应用	Ab评论	说明
WB		1/15000 - 1/30000. Detects a band of approximately 98 kDa (predicted molecular weight: 105 kDa).
IP		Use at an assay dependent concentration.

靶标

功能	Component of the eukaryotic translation initiation factor 3 (eIF-3) complex, which is required for several steps in the initiation of protein synthesis. The eIF-3 complex associates with the 40S ribosome and facilitates the recruitment of eIF-1, eIF-1A, eIF-2:GTP:methionyl-tRNAi and eIF-5 to form the 43S preinitiation complex (43S PIC). The eIF-3 complex stimulates mRNA recruitment to the 43S PIC and scanning of the mRNA for AUG recognition. The eIF-3 complex is also required for disassembly and recycling of posttermination ribosomal complexes and subsequently prevents premature joining of the 40S and 60S ribosomal subunits prior to initiation.
序列相似性	Belongs to the eIF-3 subunit C family. Contains 1 PCI domain.
翻译后修饰	Phosphorylated. Phosphorylation is enhanced upon serum stimulation.
细胞定位	Cytoplasm.

图片



All lanes : Anti-EIF3C antibody (ab19360) at 0.1 µg/ml

Lane 1 : HeLa cell lysate

Lane 2 : HEK293T cell lysate

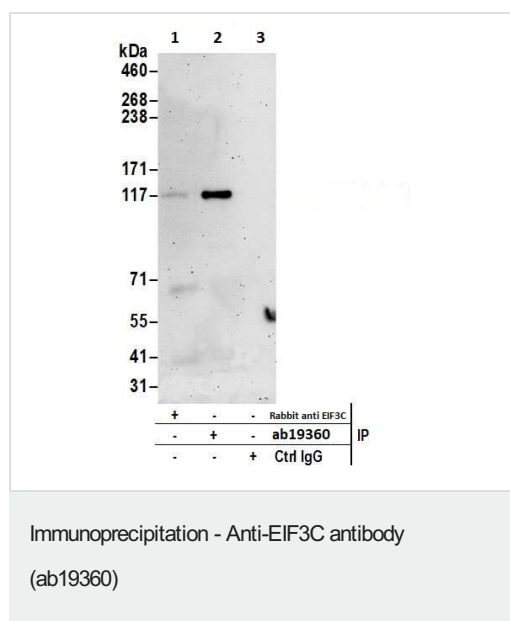
Lane 3 : Jurkat cell lysate

Lysates/proteins at 50 µg per lane.

Predicted band size: 105 kDa

Exposure time: 3 minutes

Detection: Chemiluminescence



ab19360 immunoprecipitating EIF3C in HEK293T whole cell lysate.

Lane 1 : Rabbit anti EIF3C + HEK293T whole cell lysate

Lane 2 (+): ab19360 + HEK293T whole cell lysate.

Lane 3 (-): Control IgG instead of ab19360 in HEK293T whole cell lysate.

For western blotting, ab19360 was used at 1 µg/mL.

Detection: Chemiluminescence

Please note: All products are "FOR RESEARCH USE ONLY. NOT FOR USE IN DIAGNOSTIC PROCEDURES"

Our Abpromise to you: Quality guaranteed and expert technical support

- Replacement or refund for products not performing as stated on the datasheet
- Valid for 12 months from date of delivery
- Response to your inquiry within 24 hours
- We provide support in Chinese, English, French, German, Japanese and Spanish
- Extensive multi-media technical resources to help you
- We investigate all quality concerns to ensure our products perform to the highest standards

If the product does not perform as described on this datasheet, we will offer a refund or replacement. For full details of the Abpromise, please visit <https://www.abcam.cn/abpromise> or contact our technical team.

Terms and conditions

- Guarantee only valid for products bought direct from Abcam or one of our authorized distributors