


### Anti-eIF3A antibody ab86146

★★★★★ [2 Abreviews](#) [8 References](#) [5 图像](#)

#### 概述

产品名称	Anti-eIF3A抗体
描述	兔多克隆抗体to eIF3A
宿主	Rabbit
经测试应用	适用于: WB, IP, IHC-P
种属反应性	与反应: Mouse, Human 预测可用于: Rat, Rabbit, Guinea pig, Chimpanzee, Rhesus monkey, Gorilla, Orangutan 
免疫原	A region between residue 860 and 910 of human eIF3A using the numbering given in entry NP_003741.1.
阳性对照	HeLa whole cell lysate ( <a href="#">ab150035</a> ) 293T whole cell lysate NIH3T3 whole cell lysate
常规说明	<p>The Life Science industry has been in the grips of a reproducibility crisis for a number of years. Abcam is leading the way in addressing this with our range of recombinant monoclonal antibodies and knockout edited cell lines for gold-standard validation. Please check that this product meets your needs before purchasing.</p> <p>If you have any questions, special requirements or concerns, please send us an inquiry and/or contact our Support team ahead of purchase. Recommended alternatives for this product can be found below, along with publications, customer reviews and Q&amp;As</p>

#### 性能

形式	Liquid
存放说明	Shipped at 4°C. Store at +4°C short term (1-2 weeks). Upon delivery aliquot. Store at -20°C. Avoid freeze / thaw cycle.
存储溶液	pH: 6.8 Preservative: 0.09% Sodium azide Constituents: 0.1% BSA, Tris buffered saline
纯度	Immunogen affinity purified
克隆	多克隆
同种型	IgG

#### 应用

## The Abpromise guarantee

**Abpromise™** 承诺保证使用ab86146于以下的经测试应用

“应用说明”部分 下显示的仅为推荐的起始稀释度;实际最佳的稀释度/浓度应由使用者检定。

应用	Ab评论	说明
WB	★★★★★ (2)	1/2000 - 1/10000. Predicted molecular weight: 167 kDa.
IP		Use at 2-5 µg/mg of lysate.
IHC-P		1/100 - 1/500. Perform heat mediated antigen retrieval before commencing with IHC staining protocol.

## 靶标

### 功能

Component of the eukaryotic translation initiation factor 3 (eIF-3) complex, which is required for several steps in the initiation of protein synthesis. The eIF-3 complex associates with the 40S ribosome and facilitates the recruitment of eIF-1, eIF-1A, eIF-2:GTP:methionyl-tRNAi and eIF-5 to form the 43S pre-initiation complex (43S PIC). The eIF-3 complex stimulates mRNA recruitment to the 43S PIC and scanning of the mRNA for AUG recognition. The eIF-3 complex is also required for disassembly and recycling of post-termination ribosomal complexes and subsequently prevents premature joining of the 40S and 60S ribosomal subunits prior to initiation. Essential for the initiation of translation on type-1 viral ribosomal entry sites (IRESs), like for HCV, PV, EV71 or BEV translation (PubMed:23766293, PubMed:24357634). In case of FCV infection, plays a role in the ribosomal termination-reinitiation event leading to the translation of VP2 (PubMed:18056426).

### 序列相似性

Belongs to the eIF-3 subunit A family.  
Contains 1 PCI domain.

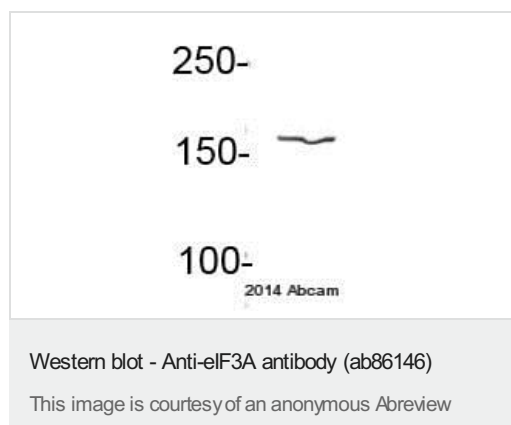
### 翻译后修饰

Phosphorylated. Phosphorylation is enhanced upon serum stimulation.

### 细胞定位

Cytoplasm.

## 图片



Anti-eIF3A antibody (ab86146) at 1/1000 dilution + Mouse pancreatic cancer whole cell lysate at 20 µg

### Secondary

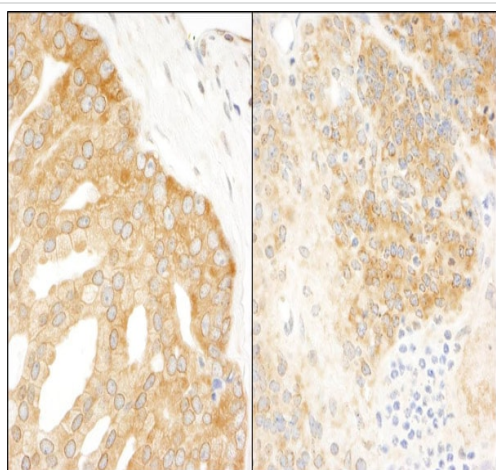
IRDye® 680LT-conjugated donkey anti-mouse IgG polyclonal at 1/15000 dilution

Performed under reducing conditions.

**Predicted band size:** 167 kDa

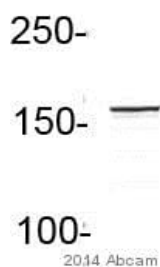
**Observed band size:** 166 kDa

**Exposure time:** 10 minutes



Immunohistochemistry (Formalin/PFA-fixed paraffin-embedded sections) - Anti-eIF3A antibody (ab86146)

Immunohistochemistry (Formalin/PFA-fixed paraffin-embedded sections) analysis of human prostate carcinoma (left) and mouse teratoma (right) tissues labelling eIF3A with ab86146 at 1/200 (1µg/ml). Detection: DAB.



Western blot - Anti-eIF3A antibody (ab86146)  
This image is courtesy of an anonymous Abreview

Anti-eIF3A antibody (ab86146) at 1/1000 dilution + Human U2OS osteosarcoma whole cell lysate at 20 µg

#### Secondary

IRDye® 800CW conjugated donkey anti-rabbit polyclonal at 1/15000 dilution

Performed under reducing conditions.

**Predicted band size:** 167 kDa

**Observed band size:** 166 kDa

**Exposure time:** 5 minutes

**All lanes :** Anti-eIF3A antibody (ab86146) at 0.04 µg/ml

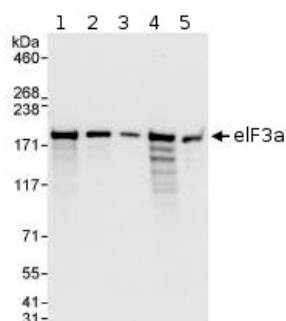
**Lane 1 :** HeLa whole cell lysate at 50 µg

**Lane 2 :** HeLa whole cell lysate at 15 µg

**Lane 3 :** HeLa whole cell lysate at 5 µg

**Lane 4 :** 293T whole cell lysate at 50 µg

**Lane 5 :** NIH3T3 whole cell lysate at 50 µg

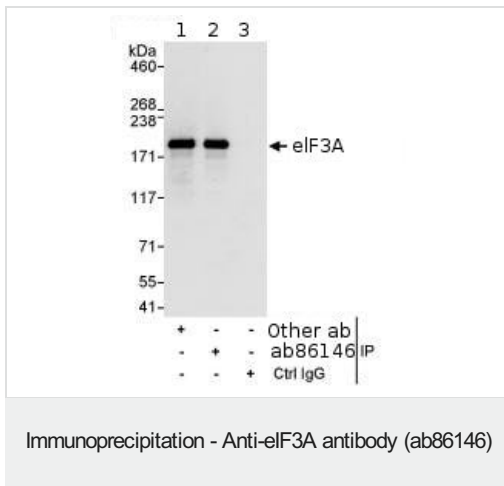


Western blot - Anti-eIF3A antibody (ab86146)

Developed using the ECL technique.

**Predicted band size:** 167 kDa

**Exposure time:** 3 seconds



Detection of Human eIF3A by Immunoprecipitation, using ab86146 at 3µg/mg lysate. Image shows immunoprecipitated eIF3A detected with post IP WB, loading 20% of IP and using HeLa whole cell lysate at 1 mg, with an antibody recognising an upstream epitope in lane 1, ab86146 at 1 µg/ml in lane 2 and control IgG in lane 3. Detection: Chemiluminescence with an exposure time of 3 seconds.

**Please note:** All products are "FOR RESEARCH USE ONLY. NOT FOR USE IN DIAGNOSTIC PROCEDURES"

### Our Abpromise to you: Quality guaranteed and expert technical support

- Replacement or refund for products not performing as stated on the datasheet
- Valid for 12 months from date of delivery
- Response to your inquiry within 24 hours
- We provide support in Chinese, English, French, German, Japanese and Spanish
- Extensive multi-media technical resources to help you
- We investigate all quality concerns to ensure our products perform to the highest standards

If the product does not perform as described on this datasheet, we will offer a refund or replacement. For full details of the Abpromise, please visit <https://www.abcam.cn/abpromise> or contact our technical team.

### Terms and conditions

- Guarantee only valid for products bought direct from Abcam or one of our authorized distributors