


Anti-EIF2G/EIF2S3 antibody ab33207

1 References **3 图像**

概述

产品名称	Anti-EIF2G/EIF2S3抗体
描述	兔多克隆抗体to EIF2G/EIF2S3
宿主	Rabbit
经测试应用	适用于: ICC/IF, WB
种属反应性	与反应: Mouse, Rat 预测可用于: Human 
免疫原	Synthetic peptide corresponding to Mouse EIF2G/EIF2S3 (C terminal) conjugated to keyhole limpet haemocyanin. (Peptide available as ab33374 , ab33375)
阳性对照	WB: NIH 3T3, PC12 and MEF1 whole cell lysates, mouse liver, spinal cord, testis, ovary, heart and kidney tissue lysates. ICC/IF: MEF1 cells.
常规说明	<p>The Life Science industry has been in the grips of a reproducibility crisis for a number of years. Abcam is leading the way in addressing this with our range of recombinant monoclonal antibodies and knockout edited cell lines for gold-standard validation. Please check that this product meets your needs before purchasing.</p> <p>If you have any questions, special requirements or concerns, please send us an inquiry and/or contact our Support team ahead of purchase. Recommended alternatives for this product can be found below, along with publications, customer reviews and Q&As</p>

性能

形式	Liquid
存放说明	Shipped at 4°C. Store at +4°C short term (1-2 weeks). Upon delivery aliquot. Store at -20°C or -80°C. Avoid freeze / thaw cycle.
存储溶液	pH: 7.40 Preservative: 0.02% Sodium azide Constituent: PBS
	Batches of this product that have a concentration < 1mg/ml may have BSA added as a stabilising agent. If you would like information about the formulation of a specific lot, please contact our scientific support team who will be happy to help.

纯度	Immunogen affinity purified
克隆	多克隆
同种型	IgG

应用

The Abpromise guarantee **Abpromise™**承诺保证使用ab33207于以下的经测试应用

“应用说明”部分 下显示的仅为推荐的起始稀释度;实际最佳的稀释度/浓度应由使用者检定。

应用	Ab评论	说明
ICC/IF		Use at an assay dependent concentration.
WB		Use a concentration of 1 µg/ml. Detects a band of approximately 51 kDa (predicted molecular weight: 51 kDa).

靶标

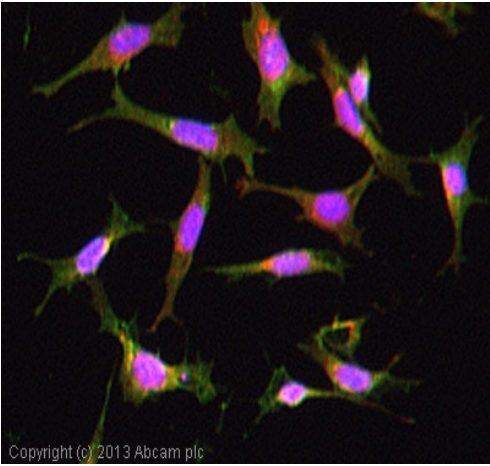
功能

eIF-2 functions in the early steps of protein synthesis by forming a ternary complex with GTP and initiator tRNA. This complex binds to a 40S ribosomal subunit, followed by mRNA binding to form a 43S preinitiation complex. Junction of the 60S ribosomal subunit to form the 80S initiation complex is preceded by hydrolysis of the GTP bound to eIF-2 and release of an eIF-2-GDP binary complex. In order for eIF-2 to recycle and catalyze another round of initiation, the GDP bound to eIF-2 must exchange with GTP by way of a reaction catalyzed by eIF-2B.

序列相似性

Belongs to the GTP-binding elongation factor family. EIF2G subfamily.

图片



Copyright (c) 2013 Abcam plc

Immunocytochemistry/ Immunofluorescence - Anti-EIF2G/EIF2S3 antibody (ab33207)

ICC/IF image of ab33207 stained MEF1 cells. The cells were 4% formaldehyde fixed (10 min) and then incubated in 1%BSA / 10% normal goat serum / 0.3M glycine in 0.1% PBS-Tween for 1h to permeabilise the cells and block non-specific protein-protein interactions. The cells were then incubated with the antibody (ab33207, 5µg/ml) overnight at +4°C. The secondary antibody (green) was [ab96899](#), DyLight® 488 goat anti-rabbit IgG (H+L) used at a 1/250 dilution for 1h. Alexa Fluor® 594 WGA was used to label plasma membranes (red) at a 1/200 dilution for 1h. DAPI was used to stain the cell nuclei (blue) at a concentration of 1.43µM.



All lanes : Anti-EIF2G/EIF2S3 antibody (ab33207) at 1 µg/ml

Lane 1 : Mouse Embryonic Fibroblast 1

Lane 2 : NIH/3T3 whole cell lysate ([ab7179](#))

Lysates/proteins at 10 µg per lane.

Secondary

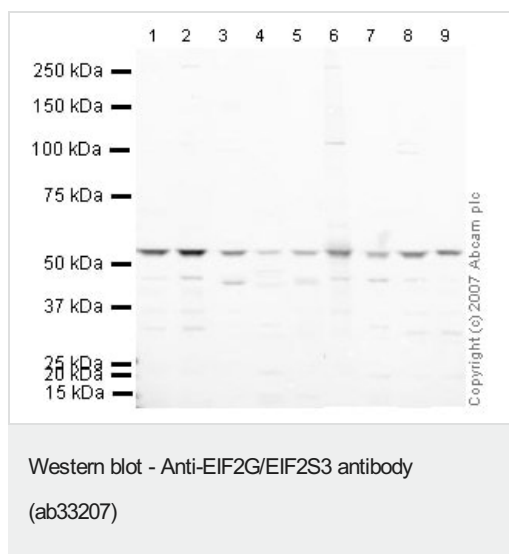
All lanes : IRDye 680 Conjugated Goat Anti-Rabbit IgG (H+L) at 1/15000 dilution

Performed under reducing conditions.

Predicted band size: 51 kDa

Observed band size: 51 kDa

ab33207 also gave a positive result in mouse adult brain, testes, heart, skeletal muscle, brain (0 day) and fetal (14 day) lysates.



All lanes : Anti-EIF2G/EIF2S3 antibody (ab33207) at 1 µg/ml

Lane 1 : NIH/3T3 whole cell lysate ([ab7179](#))

Lane 2 : MEF1 (Mouse embryonic fibroblast cell line) Whole Cell Lysate

Lane 3 : Liver (Mouse) Tissue Lysate - normal tissue

Lane 4 : Heart (Mouse) Tissue Lysate

Lane 5 : Kidney (Mouse) Tissue Lysate

Lane 6 : Testis (Mouse) Tissue Lysate - normal tissue

Lane 7 : Spinal Cord (Mouse) Tissue Lysate

Lane 8 : Ovary (Mouse) Tissue Lysate - normal tissue

Lane 9 : PC12 (Rat adrenal pheochromocytoma cell line) Whole Cell Lysate

Lysates/proteins at 10 µg per lane.

Secondary

All lanes : IRDye 680 Conjugated Goat Anti-Rabbit IgG (H+L) at 1/10000 dilution

Performed under reducing conditions.

Predicted band size: 51 kDa

Observed band size: 51 kDa

Please note: All products are "FOR RESEARCH USE ONLY. NOT FOR USE IN DIAGNOSTIC PROCEDURES"

Our Abpromise to you: Quality guaranteed and expert technical support

- Replacement or refund for products not performing as stated on the datasheet
- Valid for 12 months from date of delivery
- Response to your inquiry within 24 hours
- We provide support in Chinese, English, French, German, Japanese and Spanish
- Extensive multi-media technical resources to help you
- We investigate all quality concerns to ensure our products perform to the highest standards

If the product does not perform as described on this datasheet, we will offer a refund or replacement. For full details of the Abpromise, please visit <https://www.abcam.cn/abpromise> or contact our technical team.

Terms and conditions

- Guarantee only valid for products bought direct from Abcam or one of our authorized distributors