




Anti-eIF-6 antibody ab175383

2 图像

概述	
产品名称	Anti-eIF-6抗体
描述	兔多克隆抗体to eIF-6
宿主	Rabbit
经测试应用	适用于: ICC/IF, WB
种属反应性	与反应: Human 预测可用于: Cow, Xenopus laevis, Zebrafish 
免疫原	<p>Recombinant full length protein corresponding to Human eIF-6 aa 1-245. Sequence:</p> <p>MAVRASFENNCEIGCFAKLTNTYCLVAIGGSENFYSVFEGEL SDTIPVVH ASIAGCRIIGRMCVGNRHGLLVPNNTTDQELQHIRNSLPDTV QIRRVEER LSALGNVTTTCNDYVALVHPDLDRETEEILADV LKVEVFRQTV ADQVLVGS YCVFSNQGGLVHPKTSIEDQDELSSLLQVPLVAGTVNRGSEV IAAGMVVN DWCAFCGLDTTSTELSVVESVFKLNEAQPSTIATSMRDSLID SLT</p> <p>Database link: P56537</p> <p> Run BLAST with  Run BLAST with</p>
常规说明	<p>The Life Science industry has been in the grips of a reproducibility crisis for a number of years. Abcam is leading the way in addressing this with our range of recombinant monoclonal antibodies and knockout edited cell lines for gold-standard validation. Please check that this product meets your needs before purchasing.</p> <p>If you have any questions, special requirements or concerns, please send us an inquiry and/or contact our Support team ahead of purchase. Recommended alternatives for this product can be found below, along with publications, customer reviews and Q&As</p>
性能	
形式	Liquid

存放说明	Shipped at 4°C. Store at +4°C short term (1-2 weeks). Upon delivery aliquot. Store at -20°C long term. Avoid freeze / thaw cycle.
存储溶液	pH: 7.30 Preservative: 0.02% Sodium azide Constituents: 49% PBS, 50% Glycerol
纯度	Protein A purified
克隆	多克隆
同种型	IgG

应用

The Abpromise guarantee

Abpromise™承诺保证使用ab175383于以下的经测试应用

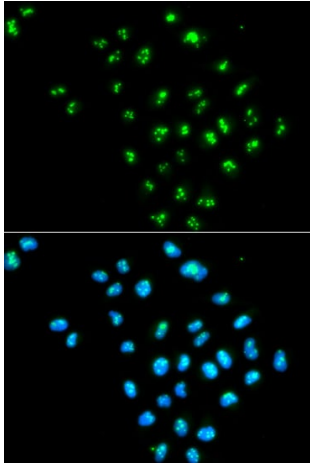
“应用说明”部分 下显示的仅为推荐的起始稀释度;实际最佳的稀释度/浓度应由使用者检定。

应用	Ab评论	说明
ICC/IF		Use at an assay dependent concentration.
WB		1/500 - 1/2000. Predicted molecular weight: 27 kDa.

靶标

功能	Binds to the 60S ribosomal subunit and prevents its association with the 40S ribosomal subunit to form the 80S initiation complex in the cytoplasm. May behave as a stimulatory translation initiation factor downstream insulin/growth factors. Is also involved in ribosome biogenesis. Associates with pre-60S subunits in the nucleus and is involved in its nuclear export. Cytoplasmic release of TIF6 from 60S subunits and nuclear relocalization is promoted by a RACK1 (GNB2L1)-dependent protein kinase C activity.
组织特异性	Expressed at very high levels in colon carcinoma with lower levels in normal colon and ileum and lowest levels in kidney and muscle (at protein level).
序列相似性	Belongs to the eIF-6 family.
翻译后修饰	Phosphorylation at Ser-174 and Ser-175 promotes nuclear export.
细胞定位	Cytoplasm. Nucleus > nucleolus. Shuttles between cytoplasm and nucleus/nucleolus.

图片



Immunocytochemistry/Immunofluorescence analysis of MCF7 cells using ab175383. Blue DAPI for nuclear staining.

Immunocytochemistry/ Immunofluorescence - Anti-eIF-6 antibody (ab175383)



Anti-eIF-6 antibody (ab175383) at 1/500 dilution + COLO320 cell extract

Predicted band size: 27 kDa

Western blot - Anti-eIF-6 antibody (ab175383)

Please note: All products are "FOR RESEARCH USE ONLY. NOT FOR USE IN DIAGNOSTIC PROCEDURES"

Our Abpromise to you: Quality guaranteed and expert technical support

- Replacement or refund for products not performing as stated on the datasheet
- Valid for 12 months from date of delivery
- Response to your inquiry within 24 hours
- We provide support in Chinese, English, French, German, Japanese and Spanish
- Extensive multi-media technical resources to help you
- We investigate all quality concerns to ensure our products perform to the highest standards

If the product does not perform as described on this datasheet, we will offer a refund or replacement. For full details of the Abpromise, please visit <https://www.abcam.cn/abpromise> or contact our technical team.

Terms and conditions

- Guarantee only valid for products bought direct from Abcam or one of our authorized distributors