

Anti-eIF-6 antibody ab109593

4 图像

概述

产品名称	Anti-eIF-6抗体
描述	兔多克隆抗体to eIF-6
宿主	Rabbit
经测试应用	适用于: WB, IP, IHC-P
种属反应性	与反应: Mouse, Human 预测可用于: Rat, Sheep, Rabbit, Horse, Guinea pig, Cow, Dog, Pig, Chimpanzee, Rhesus monkey, Gorilla, Catfish, Rainbow trout, Orangutan 
免疫原	Synthetic peptide corresponding to Human eIF-6 aa 150-200.
阳性对照	HeLa or NIH3T3 whole cell lysate; IHC: mouse renal cell carcinoma (renca positive), human ovarian carcinoma
常规说明	<p>The Life Science industry has been in the grips of a reproducibility crisis for a number of years. Abcam is leading the way in addressing this with our range of recombinant monoclonal antibodies and knockout edited cell lines for gold-standard validation. Please check that this product meets your needs before purchasing.</p> <p>If you have any questions, special requirements or concerns, please send us an inquiry and/or contact our Support team ahead of purchase. Recommended alternatives for this product can be found below, along with publications, customer reviews and Q&As</p>

性能

形式	Liquid
存放说明	Shipped at 4°C. Upon delivery aliquot and store at -20°C. Avoid freeze / thaw cycles.
存储溶液	pH: 7 Preservative: 0.09% Sodium azide Constituent: Tris citrate/phosphate
纯度	Immunogen affinity purified
克隆	多克隆
同种型	IgG

应用

The Abpromise guarantee

Abpromise™ 承诺保证使用 ab109593 于以下的经测试应用

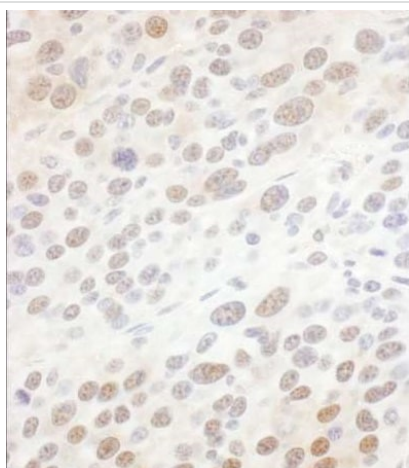
“应用说明”部分下显示的仅为推荐的起始稀释度；实际最佳的稀释度/浓度应由使用者检定。

应用	Ab评论	说明
WB		1/2000 - 1/10000. Predicted molecular weight: 27 kDa.
IP		Use at 2-5 µg/mg of lysate.
IHC-P		1/500 - 1/2000. Perform heat mediated antigen retrieval with citrate buffer pH 6 before commencing with IHC staining protocol.

靶标

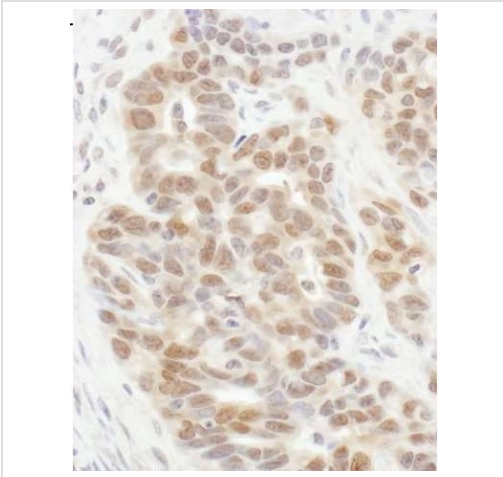
功能	Binds to the 60S ribosomal subunit and prevents its association with the 40S ribosomal subunit to form the 80S initiation complex in the cytoplasm. May behave as a stimulatory translation initiation factor downstream insulin/growth factors. Is also involved in ribosome biogenesis. Associates with pre-60S subunits in the nucleus and is involved in its nuclear export. Cytoplasmic release of TIF6 from 60S subunits and nuclear relocalization is promoted by a RACK1 (GNB2L1)-dependent protein kinase C activity.
组织特异性	Expressed at very high levels in colon carcinoma with lower levels in normal colon and ileum and lowest levels in kidney and muscle (at protein level).
序列相似性	Belongs to the eIF-6 family.
翻译后修饰	Phosphorylation at Ser-174 and Ser-175 promotes nuclear export.
细胞定位	Cytoplasm. Nucleus > nucleolus. Shuttles between cytoplasm and nucleus/nucleolus.

图片



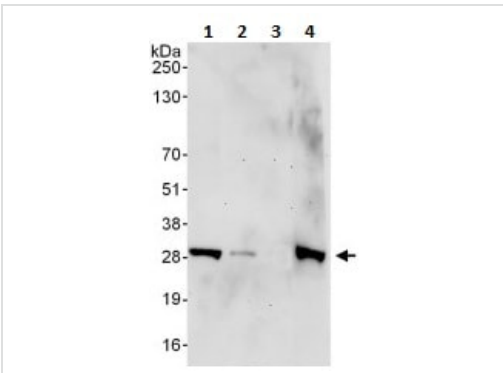
Immunohistochemistry analysis of formalin-fixed paraformaldehyde-fixed mouse renca positive renal cell carcinoma tissue staining eIF-6 with ab109593 with a 1/1000 dilution. Counterstained with hematoxylin

Immunohistochemistry (Formalin/PFA-fixed paraffin-embedded sections) - Anti-eIF-6 antibody (ab109593)



Immunohistochemistry analysis of formalin-fixed paraformaldehyde-fixed human ovarian carcinoma tissue staining eIF-6 with ab109593 with a 1/1000 dilution. Counterstained with hematoxylin

Immunohistochemistry (Formalin/PFA-fixed paraffin-embedded sections) - Anti-eIF-6 antibody (ab109593)



All lanes : Anti-eIF-6 antibody (ab109593) at 0.1 µg/ml

Lane 1 : HeLa whole cell lysate at 50 µg

Lane 2 : HeLa whole cell lysate at 15 µg

Lane 3 : HeLa whole cell lysate at 5 µg

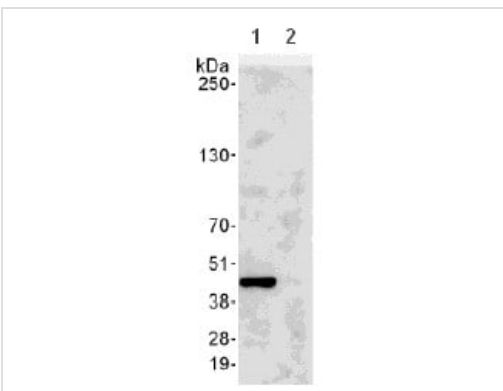
Lane 4 : NIH3T3 whole cell lysate at 50 µg

Western blot - Anti-eIF-6 antibody (ab109593)

Developed using the ECL technique.

Predicted band size: 27 kDa

Exposure time: 3 minutes



Detection of eIF-6 by Western Blot of Immunoprecipitate.

Lane 1: ab109593 at 1µg/ml staining eIF-6 in HeLa whole cell lysate immunoprecipitated using ab109593 at 6µg/mg lysate (1 mg/IP; 20% of IP loaded/lane).

Lane 2: Control IgG

Detection: Chemiluminescence with exposure time of 10 seconds.

Immunoprecipitation - Anti-eIF-6 antibody (ab109593)

Our Abpromise to you: Quality guaranteed and expert technical support

- Replacement or refund for products not performing as stated on the datasheet
- Valid for 12 months from date of delivery
- Response to your inquiry within 24 hours

- We provide support in Chinese, English, French, German, Japanese and Spanish
- Extensive multi-media technical resources to help you
- We investigate all quality concerns to ensure our products perform to the highest standards

If the product does not perform as described on this datasheet, we will offer a refund or replacement. For full details of the Abpromise, please visit <https://www.abcam.cn/abpromise> or contact our technical team.

Terms and conditions

- Guarantee only valid for products bought direct from Abcam or one of our authorized distributors