


# Anti-EHHADH antibody ab136059

[1 References](#) [1 图像](#)

### 概述

|       |   |
|-------|---|
| 产品名称  | Anti-EHHADH抗体   |
| 描述    | 兔多克隆抗体to EHHADH   |
| 宿主    | Rabbit  |
| 经测试应用 | 适用于: WB   |
| 种属反应性 | 与反应: Human<br>预测可用于: Rat   |
| 免疫原   | Synthetic peptide derived from an internal region of Human EHHADH.  |
| 阳性对照  | HepG2 cell lysate.  |
| 常规说明  | <p>The Life Science industry has been in the grips of a reproducibility crisis for a number of years. Abcam is leading the way in addressing this with our range of recombinant monoclonal antibodies and knockout edited cell lines for gold-standard validation. Please check that this product meets your needs before purchasing.</p> <p>If you have any questions, special requirements or concerns, please send us an inquiry and/or contact our Support team ahead of purchase. Recommended alternatives for this product can be found below, along with publications, customer reviews and Q&amp;As</p> |

### 性能

|      |  |
|------|--|
| 形式   | Liquid   |
| 存放说明 | Shipped at 4°C. Store at -20°C.  |
| 存储溶液 | pH: 7.40<br>Preservative: 0.02% Sodium azide<br>Constituents: 50% Glycerol (glycerin, glycerine), 49% PBS, 0.88% Sodium chloride |
| 纯度   | PBS without Mg <sup>2+</sup> and Ca <sup>2+</sup><br>Immunogen affinity purified   |
| 纯化说明 | ab136059 was affinity-purified from rabbit antiserum by immunogenic peptide affinity-chromatography.                             |
| 克隆   | 多克隆  |
| 同种型  | IgG  |

## 应用

### The Abpromise guarantee

**Abpromise™**承诺保证使用ab136059于以下的经测试应用

“应用说明”部分 下显示的仅为推荐的起始稀释度;实际最佳的稀释度/浓度应由使用者检定。

| 应用 | Ab评论 | 说明  |
|----|------|---|
| WB |      | 1/500 - 1/1000. Predicted molecular weight: 79 kDa. |

## 靶标

### 组织特异性

Liver and kidney. Lower amounts seen in the brain.

### 通路

Lipid metabolism; fatty acid beta-oxidation.

### 序列相似性

In the N-terminal section; belongs to the enoyl-CoA hydratase/isomerase family.  
In the C-terminal section; belongs to the 3-hydroxyacyl-CoA dehydrogenase family.

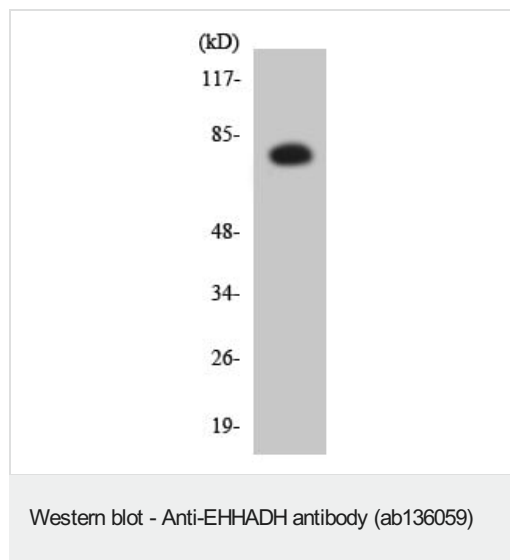
### 翻译后修饰

Acetylated, leading to enhanced enzyme activity. Acetylation is enhanced by up to 80% after treatment either with trichostin A (TSA) or with nicotinamide (NAM) with highest increase on Lys-346. Acetylation and enzyme activity increased by about 1.5% on addition of fatty acids.

### 细胞定位

Peroxisome.

## 图片



Anti-EHHADH antibody (ab136059) at 1/500 dilution + HepG2 cell lysate at 30 µg

**Predicted band size: 79 kDa**

**Please note:** All products are "FOR RESEARCH USE ONLY. NOT FOR USE IN DIAGNOSTIC PROCEDURES"

## Our Abpromise to you: Quality guaranteed and expert technical support

- Replacement or refund for products not performing as stated on the datasheet
- Valid for 12 months from date of delivery

- Response to your inquiry within 24 hours
- We provide support in Chinese, English, French, German, Japanese and Spanish
- Extensive multi-media technical resources to help you
- We investigate all quality concerns to ensure our products perform to the highest standards

If the product does not perform as described on this datasheet, we will offer a refund or replacement. For full details of the Abpromise, please visit <https://www.abcam.cn/abpromise> or contact our technical team.

### **Terms and conditions**

---

- Guarantee only valid for products bought direct from Abcam or one of our authorized distributors