




Anti-EHD2 antibody ab23935

★★★★★ **1 Abreviews** **26 References** **5 图像**

概述

产品名称	Anti-EHD2抗体
描述	山羊多克隆抗体to EHD2
宿主	Goat
特异性	This antibody is expected to recognise EHD1 protein as well as EHD2.
经测试应用	适用于: Flow Cyt (Intra), ICC, WB
种属反应性	与反应: Human 预测可用于: Mouse, Rat, Cow, Dog 
免疫原	Synthetic peptide corresponding to Human EHD2 aa 500-600 (C terminal). Database link: Q9NZN4  Run BLAST with  Run BLAST with
阳性对照	WB: Human lung, colon and placenta tissue lysate; Flow Cyt (Intra): A431 cells. ICC: A431, A549 and HeLa cells
常规说明	<p>The Life Science industry has been in the grips of a reproducibility crisis for a number of years. Abcam is leading the way in addressing this with our range of recombinant monoclonal antibodies and knockout edited cell lines for gold-standard validation. Please check that this product meets your needs before purchasing.</p> <p>If you have any questions, special requirements or concerns, please send us an inquiry and/or contact our Support team ahead of purchase. Recommended alternatives for this product can be found below, along with publications, customer reviews and Q&As</p>

性能

形式	Liquid
存放说明	Shipped at 4°C. Upon delivery aliquot and store at -20°C or -80°C. Avoid repeated freeze / thaw cycles.
存储溶液	pH: 7.30 Preservative: 0.02% Sodium azide Constituents: Tris buffered saline, 0.5% BSA
纯度	Immunogen affinity purified
纯化说明	Purified by ammonium sulphate precipitation followed by antigen affinity chromatography using the immunizing peptide.

克隆

多克隆

同种型

IgG

应用

The Abpromise guarantee

Abpromise™承诺保证使用ab23935于以下的经测试应用

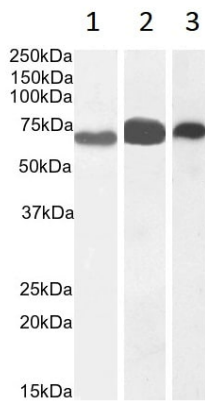
“应用说明”部分 下显示的仅为推荐的起始稀释度;实际最佳的稀释度/浓度应由使用者检定。

应用	Ab评论	说明
Flow Cyt (Intra)		Use a concentration of 10 µg/ml.
ICC		Use a concentration of 10 µg/ml.
WB		Use a concentration of 0.1 - 0.3 µg/ml. Detects a band of approximately 60 kDa (predicted molecular weight: 61 kDa). Primary incubation 1 hour at room temperature.

靶标

功能	Plays a role in membrane reorganization in response to nucleotide hydrolysis. Binds to liposomes and deforms them into tubules. Plays a role in membrane trafficking between the plasma membrane and endosomes. Important for the internalization of GLUT4. Required for normal fusion of myoblasts to skeletal muscle myotubes. Binds ATP; does not bind GTP.
组织特异性	Highly expressed in heart and moderately expressed in placenta, lung, and skeletal muscle.
序列相似性	Contains 1 EF-hand domain. Contains 1 EH domain.
结构域	The EH domain interacts with Asn-Pro-Phe (NPF) motifs of target proteins.
细胞定位	Cell membrane. Endosome membrane. Colocalizes with GLUT4 in intracellular tubulovesicular structures that are associated with cortical F-actin.

图片



Western blot - Anti-EHD2 antibody (ab23935)

All lanes : Anti-EHD2 antibody (ab23935) at 0.1 µg/ml

Lane 1 : Human Lung tissue lysate

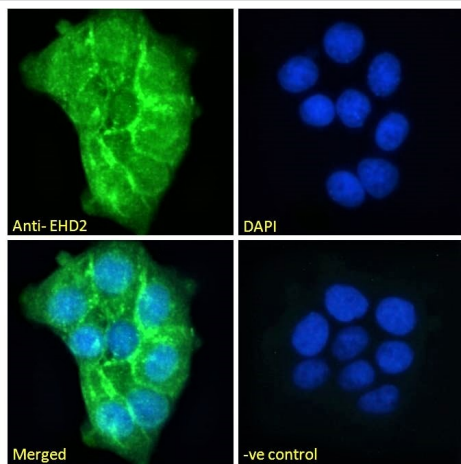
Lane 2 : Human colon tissue lysate

Lane 3 : Human placenta tissue lysate

Lysates/proteins at 35 µg per lane.

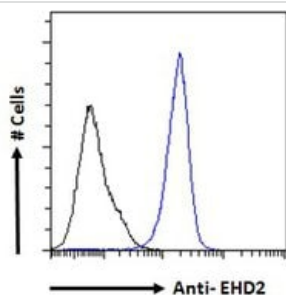
Predicted band size: 61 kDa

Lysate in RIPA buffer. Detected by chemiluminescence.



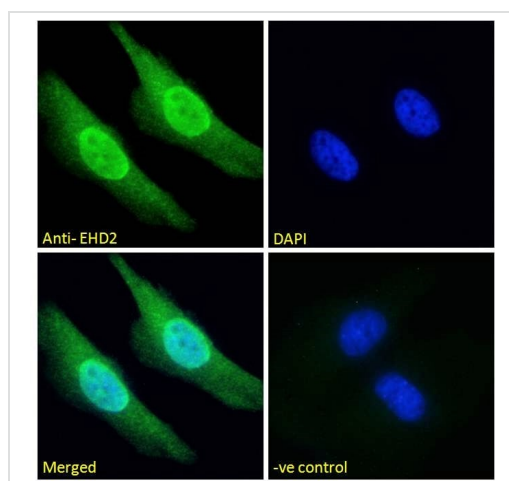
Immunocytochemistry - Anti-EHD2 antibody (ab23935)

Immunofluorescence analysis of paraformaldehyde fixed A431 cells, permeabilized with 0.15% Triton. Primary incubation with ab23935 (10 µg/ml) followed by Alexa Fluor 488 secondary antibody (2 µg/ml), showing plasma membrane staining. The nuclear stain is DAPI (blue). Negative control: Unimmunized goat IgG (10 µg/ml) followed by Alexa Fluor 488 secondary antibody (2 µg/ml).



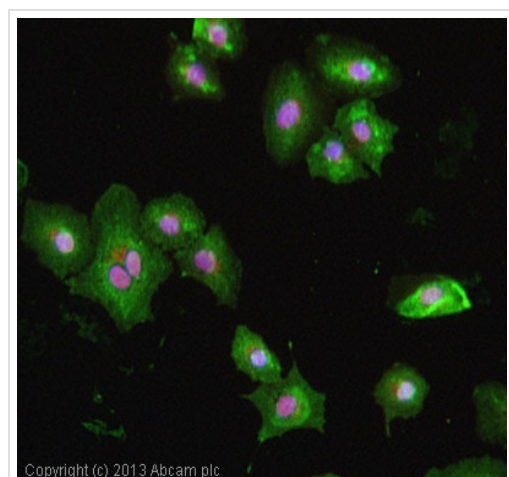
Flow Cytometry (Intracellular) - Anti-EHD2 antibody (ab23935)

Flow cytometric analysis of paraformaldehyde fixed A431 cells (blue line), permeabilized with 0.5% Triton. Primary incubation ab23935 (10 µg/ml) followed by Alexa Fluor 488 secondary antibody (1 µg/ml). IgG control: Unimmunized goat IgG (black line) followed by Alexa Fluor 488 secondary antibody.



Immunocytochemistry - Anti-EHD2 antibody
(ab23935)

Immunofluorescence analysis of paraformaldehyde fixed HeLa cells, permeabilized with 0.15% Triton. Primary incubation 1hr (10 µg/ml) followed by Alexa Fluor 488 secondary antibody (2 µg/ml), showing nuclear and cytoplasmic staining. The nuclear stain is DAPI (blue). Negative control: Unimmunized goat IgG (10 µg/ml) followed by Alexa Fluor 488 secondary antibody (2 µg/ml).



Immunocytochemistry - Anti-EHD2 antibody
(ab23935)

ICC/IF image of ab23935 stained A549 cells. The cells were 4% formaldehyde fixed (10 min) and then incubated in 1%BSA / 0.3M glycine in 0.1% PBS-Tween for 1h to permeabilise the cells and block non-specific protein-protein interactions. The cells were then incubated with the antibody (ab23935, 5µg/ml) overnight at +4°C. The secondary antibody (green) was **ab96931**, DyLight® 488 donkey anti-goat IgG (H+L) used at a 1/250 dilution for 1h. Alexa Fluor® 594 WGA was used to label plasma membranes (red) at a 1/200 dilution for 1h. DAPI was used to stain the cell nuclei (blue) at a concentration of 1.43µM

Please note: All products are "FOR RESEARCH USE ONLY. NOT FOR USE IN DIAGNOSTIC PROCEDURES"

Our Abpromise to you: Quality guaranteed and expert technical support

- Replacement or refund for products not performing as stated on the datasheet
- Valid for 12 months from date of delivery
- Response to your inquiry within 24 hours
- We provide support in Chinese, English, French, German, Japanese and Spanish
- Extensive multi-media technical resources to help you

- We investigate all quality concerns to ensure our products perform to the highest standards

If the product does not perform as described on this datasheet, we will offer a refund or replacement. For full details of the Abpromise, please visit <https://www.abcam.cn/abpromise> or contact our technical team.

Terms and conditions

- Guarantee only valid for products bought direct from Abcam or one of our authorized distributors