

Anti-EGFR (phospho T654) antibody [EP2255Y] ab75986

重组 RabMAb

2 图像

概述

产品名称	Anti-EGFR (phospho T654)抗体[EP2255Y]
描述	兔单克隆抗体[EP2255Y] to EGFR (phospho T654)
宿主	Rabbit
特异性	Recognises EGFR phosphorylated on Threonine 654 of the mature human isoform 1 (corresponding to T678 from the precursor form P00533-1/p170)
经测试应用	适用于: WB, Dot blot 不适用于: Flow Cyt, IHC-P or IP
种属反应性	与反应: Human
免疫原	Synthetic peptide. This information is proprietary to Abcam and/or its suppliers.
阳性对照	WB: A431 (Human epidermoid carcinoma epithelial cell) treated with 100ng/ml EGF for 30 minutes whole cell lysate.
常规说明	<p>This product is a recombinant monoclonal antibody, which offers several advantages including:</p> <ul style="list-style-type: none"> - High batch-to-batch consistency and reproducibility - Improved sensitivity and specificity - Long-term security of supply - Animal-free production <p>For more information see here.</p> <p>Our RabMAb[®] technology is a patented hybridoma-based technology for making rabbit monoclonal antibodies. For details on our patents, please refer to RabMAb[®] patents.</p> <p>Mouse, Rat: We have preliminary internal testing data to indicate this antibody may not react with these species. Please contact us for more information.</p>

性能

形式	Liquid
存放说明	Shipped at 4°C. Upon delivery aliquot and store at -20°C. Avoid repeated freeze / thaw cycles.
存储溶液	pH: 7.20 Preservative: 0.01% Sodium azide Constituents: 0.05% BSA, 40% Glycerol (glycerin, glycerine), 59% PBS

纯度	Protein A purified
克隆	单克隆
克隆编号	EP2255Y
同种型	IgG

应用

The Abpromise guarantee **Abpromise™承诺保证使用ab75986于以下的经测试应用**

“应用说明”部分 下显示的仅为推荐的起始稀释度;实际最佳的稀释度/浓度应由使用者检定。

应用	Ab评论	说明
WB		1/1000 - 1/50000. Predicted molecular weight: 134 kDa.
Dot blot		1/1000.

应用说明 Is unsuitable for Flow Cyt, IHC-P or IP.

靶标

功能

Receptor tyrosine kinase binding ligands of the EGF family and activating several signaling cascades to convert extracellular cues into appropriate cellular responses. Known ligands include EGF, TGFA/TGF-alpha, amphiregulin, epigen/EPGN, BTC/betacellulin, epiregulin/EREG and HBEGF/heparin-binding EGF. Ligand binding triggers receptor homo- and/or heterodimerization and autophosphorylation on key cytoplasmic residues. The phosphorylated receptor recruits adapter proteins like GRB2 which in turn activates complex downstream signaling cascades. Activates at least 4 major downstream signaling cascades including the RAS-RAF-MEK-ERK, PI3 kinase-AKT, PLCgamma-PKC and STATs modules. May also activate the NF-kappa-B signaling cascade. Also directly phosphorylates other proteins like RGS16, activating its GTPase activity and probably coupling the EGF receptor signaling to the G protein-coupled receptor signaling. Also phosphorylates MUC1 and increases its interaction with SRC and CTNNB1/beta-catenin.

Isoform 2 may act as an antagonist of EGF action.

组织特异性 Ubiquitously expressed. Isoform 2 is also expressed in ovarian cancers.

疾病相关	Lung cancer
	Inflammatory skin and bowel disease, neonatal, 2

序列相似性	Belongs to the protein kinase superfamily. Tyr protein kinase family. EGF receptor subfamily. Contains 1 protein kinase domain.
-------	--

翻译后修饰

Phosphorylation at Ser-695 is partial and occurs only if Thr-693 is phosphorylated. Phosphorylation at Thr-678 and Thr-693 by PRKD1 inhibits EGF-induced MAPK8/JNK1 activation. Dephosphorylation by PTPRJ prevents endocytosis and stabilizes the receptor at the plasma membrane. Autophosphorylation at Tyr-1197 is stimulated by methylation at Arg-1199 and enhances interaction with PTPN6. Autophosphorylation at Tyr-1092 and/or Tyr-1110 recruits STAT3. Dephosphorylated by PTPN1 and PTPN2.

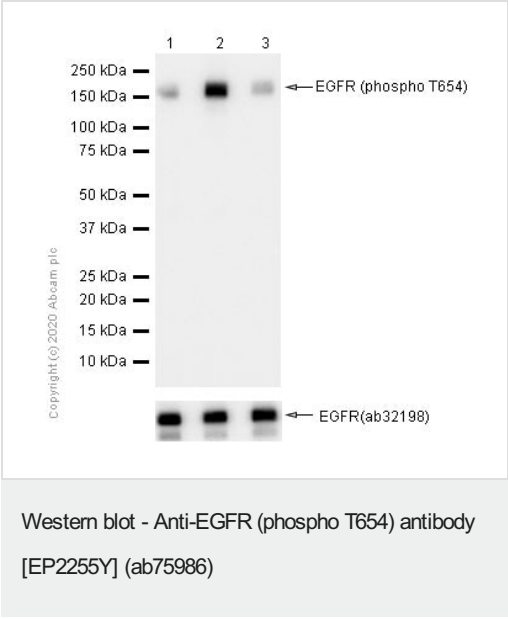
Monoubiquitinated and polyubiquitinated upon EGF stimulation; which does not affect tyrosine kinase activity or signaling capacity but may play a role in lysosomal targeting. Polyubiquitin linkage is mainly through 'Lys-63', but linkage through 'Lys-48', 'Lys-11' and 'Lys-29' also occurs.

细胞定位

Deubiquitination by OTUD7B prevents degradation. Ubiquitinated by RNF115 and RNF126. Methylated. Methylation at Arg-1199 by PRMT5 stimulates phosphorylation at Tyr-1197.

Secreted and Cell membrane. Endoplasmic reticulum membrane. Golgi apparatus membrane. Nucleus membrane. Endosome. Endosome membrane. Nucleus. In response to EGF, translocated from the cell membrane to the nucleus via Golgi and ER. Endocytosed upon activation by ligand. Colocalized with GPER1 in the nucleus of estrogen agonist-induced cancer-associated fibroblasts (CAF).

图片



All lanes : Anti-EGFR (phospho T654) antibody [EP2255Y] (ab75986) at 1/1000 dilution (Purified)

Lane 1 : A431 (Human epidermoid carcinoma epithelial cell) whole cell lysate

Lane 2 : A431 (Human epidermoid carcinoma epithelial cell) treated with 100ng/ml EGF for 30 minutes whole cell lysate

Lane 3 : A431 (Human epidermoid carcinoma epithelial cell) treated with 100ng/ml EGF for 30 minutes whole cell lysate, then the membrane treated with Lambda Phosphatase for 1 hour

Lysates/proteins at 15 µg per lane.

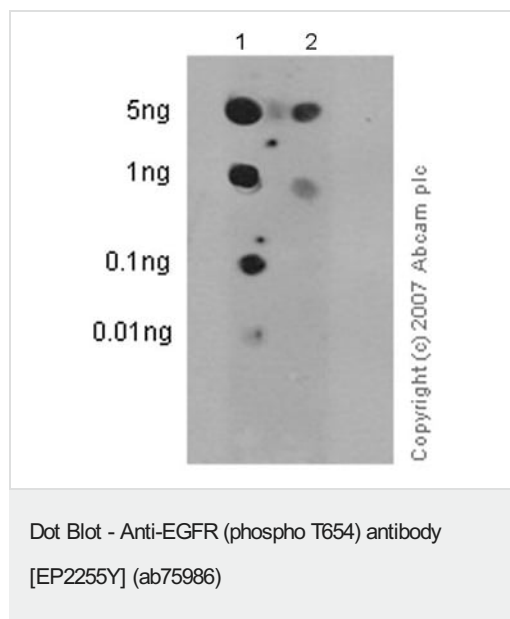
Secondary

All lanes : Goat Anti-Rabbit IgG H&L (HRP) (**ab97051**) at 1/20000 dilution

Predicted band size: 134 kDa

Observed band size: 170 kDa

Blocking buffer: 5% NFDM/TBST



Primary antibody dilution: 1/1000

Secondary antibody: goat anti-rabbit IgG, (H+L), peroxidase conjugated

Secondary antibody dilution: 1/2500

Blocking & dilution buffer: 5% NFDM/TBST

Lane 1 sample: EGFR (pT654) phospho peptide

Lane 2 sample: EGFR non-phospho peptide

Exposure time: 3 minutes

Please note: All products are "FOR RESEARCH USE ONLY. NOT FOR USE IN DIAGNOSTIC PROCEDURES"

Our Abpromise to you: Quality guaranteed and expert technical support

- Replacement or refund for products not performing as stated on the datasheet
- Valid for 12 months from date of delivery
- Response to your inquiry within 24 hours
- We provide support in Chinese, English, French, German, Japanese and Spanish
- Extensive multi-media technical resources to help you
- We investigate all quality concerns to ensure our products perform to the highest standards

If the product does not perform as described on this datasheet, we will offer a refund or replacement. For full details of the Abpromise, please visit <https://www.abcam.cn/abpromise> or contact our technical team.

Terms and conditions

- Guarantee only valid for products bought direct from Abcam or one of our authorized distributors