

### Anti-EGF antibody ab9695

★★★★★ [3 Abreviews](#) [31 References](#) [2 图像](#)

#### 概述

产品名称	Anti-EGF抗体
描述	兔多克隆抗体to EGF
宿主	Rabbit
经测试应用	适用于: WB, IHC-P, ELISA, Neutralising, Sandwich ELISA
种属反应性	与反应: Human, Recombinant fragment
免疫原	Recombinant full length protein corresponding to Human EGF. Highly pure (>98%) recombinant hEGF (human Epidermal Growth Factor) Database link: <a href="#">P01133</a>
常规说明	<p>Although some customers have been successful in IHC we no longer batch test in this application. For IHC validate antibody please see <a href="#">ab184265</a>.</p> <p>The Life Science industry has been in the grips of a reproducibility crisis for a number of years. Abcam is leading the way in addressing this with our range of recombinant monoclonal antibodies and knockout edited cell lines for gold-standard validation. Please check that this product meets your needs before purchasing.</p> <p>If you have any questions, special requirements or concerns, please send us an inquiry and/or contact our Support team ahead of purchase. Recommended alternatives for this product can be found below, along with publications, customer reviews and Q&amp;As</p>

#### 性能

形式	Lyophilized:Reconstitute with 200µl of sterile water.
存放说明	Shipped at 4°C. Store at +4°C short term (1-2 weeks). Upon delivery aliquot. Store at -20°C long term.
存储溶液	No preservative, sterile filtered
纯度	Immunogen affinity purified
克隆	多克隆
同种型	IgG
轻链类型	unknown

#### 应用

## The Abpromise guarantee

**Abpromise™**承诺保证使用ab9695于以下的经测试应用

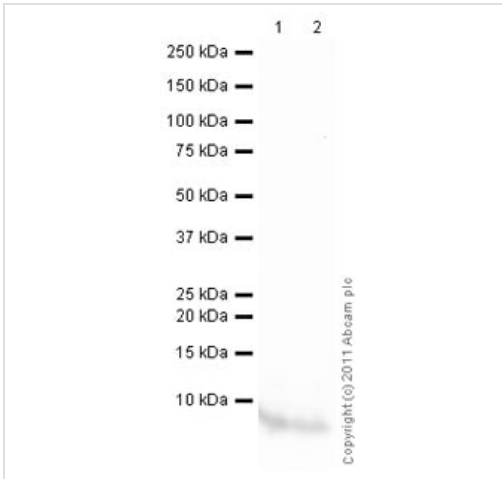
“应用说明”部分下显示的仅为推荐的起始稀释度;实际最佳的稀释度/浓度应由使用者检定。

应用	Ab评论	说明
WB	★★★★★ (2)	Use a concentration of 0.1 - 0.2 µg/ml. To detect hEGF by Western Blot analysis this antibody can be used at a concentration of 0.1 - 0.2 µg/ml. Used in conjunction with compatible secondary reagents the detection limit for recombinant hEGF is 1.5 - 3.0 ng/lane, under either reducing or non-reducing conditions. Western blot bands should be around 6.2 kDa.
IHC-P	★★★★★ (1)	Use at an assay dependent concentration.
ELISA		Use at an assay dependent concentration. To detect hEGF by direct ELISA (using 100µl/well antibody solution) a concentration of at least 0.5µg/ml of this antibody is required. This antigen affinity purified antibody, in conjunction with compatible secondary reagents, allows the detection of 0.2 - 0.4 ng/well of recombinant hEGF.
Neutralising		Use at an assay dependent concentration. To yield one-half maximal inhibition [ND50] of the biological activity of hEGF (2.0 ng/ml), a concentration of 0.25 - 0.35 µg/ml of this antibody is required.
Sandwich ELISA		Use a concentration of 0.5 - 2 µg/ml. For sandwich ELISA, use this antibody as Detection at 0.5µg/ml with <b>ab18635</b> as Capture.

## 靶标

功能	EGF stimulates the growth of various epidermal and epithelial tissues in vivo and in vitro and of some fibroblasts in cell culture. Magnesiotropic hormone that stimulates magnesium reabsorption in the renal distal convoluted tubule via engagement of EGFR and activation of the magnesium channel TRPM6. Can induce neurite outgrowth in motoneurons of the pond snail <i>Lymnaea stagnalis</i> in vitro (PubMed:10964941).
组织特异性	Expressed in kidney, salivary gland, cerebrum and prostate.
疾病相关	Hypomagnesemia 4
序列相似性	Contains 9 EGF-like domains. Contains 9 LDL-receptor class B repeats.
翻译后修饰	O-glycosylated with core 1-like and core 2-like glycans. It is uncertain if Ser-954 or Thr-955 is O-glycosylated. The modification here shows glycan heterogeneity: HexHexNAc (major) and Hex2HexNAc2 (minor).
细胞定位	Membrane.

## 图片

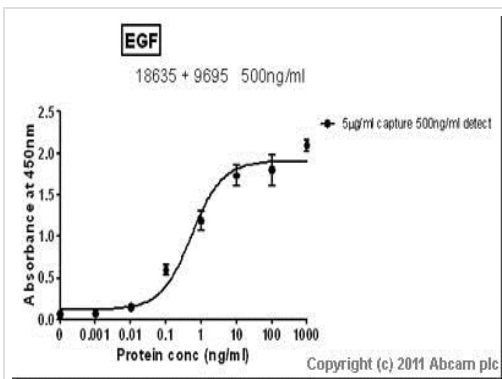


Western blot - Anti-EGF antibody (ab9695)

Primary ab9695 was used at a dilution of 0.2 ug/ml.

Lane 1: 250 ng Recombinant human EGF protein

Lane 2: 125 ng Recombinant human EGF protein



Sandwich ELISA - Anti-EGF antibody (ab9695)

Standard Curve for EGF (Analyte: **ab51082**) dilution range 1pg/ml to 1ug/ml using Capture Antibody Mouse monoclonal [S-177] to EGF (**ab18635**) at 5ug/ml and Detector Antibody Rabbit polyclonal to EGF (ab9695) at 0.5ug/ml

**Please note:** All products are "FOR RESEARCH USE ONLY. NOT FOR USE IN DIAGNOSTIC PROCEDURES"

### Our Abpromise to you: Quality guaranteed and expert technical support

- Replacement or refund for products not performing as stated on the datasheet
- Valid for 12 months from date of delivery
- Response to your inquiry within 24 hours
- We provide support in Chinese, English, French, German, Japanese and Spanish
- Extensive multi-media technical resources to help you
- We investigate all quality concerns to ensure our products perform to the highest standards

If the product does not perform as described on this datasheet, we will offer a refund or replacement. For full details of the Abpromise, please visit <https://www.abcam.cn/abpromise> or contact our technical team.

### Terms and conditions

- Guarantee only valid for products bought direct from Abcam or one of our authorized distributors