

### Anti-EFTUD2 antibody ab72456

★★★★★ [1 Abreviews](#) [4 References](#) [4 图像](#)

#### 概述

产品名称	Anti-EFTUD2抗体
描述	兔多克隆抗体to EFTUD2
宿主	Rabbit
经测试应用	适用于: IHC-P, WB, IP
种属反应性	与反应: Mouse, Human 预测可用于: Rat, Rabbit, Horse, Chicken, Guinea pig, Cow, Dog, Turkey, Pig, Xenopus laevis, Caenorhabditis elegans, Chimpanzee, Zebrafish, Rhesus monkey, Gorilla, Orangutan, Xenopus tropicalis 
免疫原	Synthetic peptide (Human) corresponding to a region between residues 1 and 50 of EFTUD2. (NP_004238.2)
常规说明	<p>The Life Science industry has been in the grips of a reproducibility crisis for a number of years. Abcam is leading the way in addressing this with our range of recombinant monoclonal antibodies and knockout edited cell lines for gold-standard validation. Please check that this product meets your needs before purchasing.</p> <p>If you have any questions, special requirements or concerns, please send us an inquiry and/or contact our Support team ahead of purchase. Recommended alternatives for this product can be found below, along with publications, customer reviews and Q&amp;As</p>

#### 性能

形式	Liquid
存放说明	Shipped at 4°C. Upon delivery aliquot and store at -20°C. Avoid freeze / thaw cycles.
存储溶液	pH: 6.8 Preservative: 0.09% Sodium azide Constituents: 0.1% BSA, Tris buffered saline
纯度	Immunogen affinity purified
克隆	多克隆
同种型	IgG

#### 应用

The Abpromise guarantee

Abpromise™承诺保证使用ab72456于以下的经测试应用

“应用说明”部分 下显示的仅为推荐的起始稀释度;实际最佳的稀释度/浓度应由使用者检定。

应用	Ab评论	说明
IHC-P		Use a concentration of 1 µg/ml. Perform heat mediated antigen retrieval with citrate buffer pH 6 before commencing with IHC staining protocol.
WB		1/2000 - 1/10000. Detects a band of approximately 117 kDa (predicted molecular weight: 109 kDa).
IP		Use at 2-5 µg/mg of lysate.

靶标	
功能	Component of the U5 snRNP complex required for pre-mRNA splicing. Binds GTP.
疾病相关	Defects in EFTUD2 are the cause of mandibulofacial dysostosis with microcephaly (MFDM) [MIM:610536]. A rare syndrome characterized by progressive microcephaly, midface and malar hypoplasia, micrognathia, microtia, dysplastic ears, preauricular skin tags, significant developmental delay, and speech delay. Many patients have major sequelae, including choanal atresia that results in respiratory difficulties, conductive hearing loss, and cleft palate.
序列相似性	Belongs to the GTP-binding elongation factor family. EF-G/EF-2 subfamily.
翻译后修饰	Phosphorylated upon DNA damage, probably by ATM or ATR.
细胞定位	Nucleus.

图片

Western blot - Anti-EFTUD2 antibody (ab72456)

**All lanes :** Anti-EFTUD2 antibody (ab72456) at 0.04 µg/ml

**Lane 1 :** HeLa whole cell lysate at 50 µg

**Lane 2 :** HeLa whole cell lysate at 15 µg

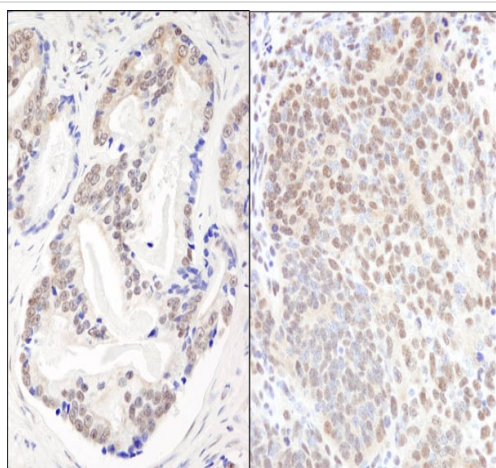
**Lane 3 :** HeLa whole cell lysate at 5 µg

**Lane 4 :** 293T whole cell lysate at 50 µg

**Lane 5 :** NIH3T3 whole cell lysate at 50 µg

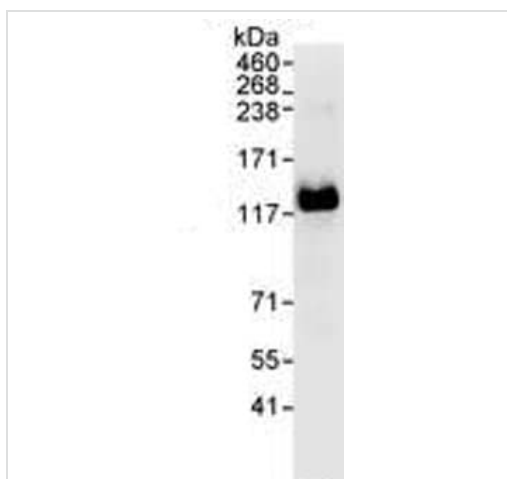
**Predicted band size:** 109 kDa

**Observed band size:** 117 kDa



Immunohistochemistry (Formalin/PFA-fixed paraffin-embedded sections) analysis of human prostate carcinoma (left) and mouse teratoma (right) tissues labelling EFTUD2 with ab72456 at 1/200 (1µg/ml). Detection: DAB.

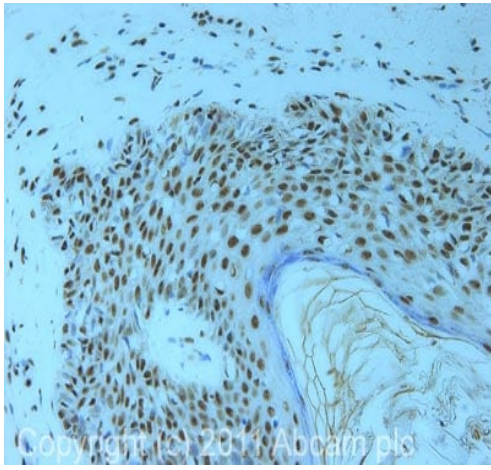
Immunohistochemistry (Formalin/PFA-fixed paraffin-embedded sections) - Anti-EFTUD2 antibody (ab72456)



HeLa whole cell lysate (1 mg for IP, 20% of IP loaded), with ab72456 used for IP at 3 µg/mg lysate, and at 0.1 µg/ml for subsequent WB.

Detection: Chemiluminescence with an exposure time of 10 seconds.

Immunoprecipitation - Anti-EFTUD2 antibody (ab72456)



Immunohistochemistry (Formalin/PFA-fixed paraffin-embedded sections) - Anti-EFTUD2 antibody (ab72456)

IHC image of ab72456 staining in human melanoma formalin fixed paraffin embedded tissue section, performed on a Leica Bond™ system using the standard protocol F. The section was pre-treated using heat mediated antigen retrieval with sodium citrate buffer (pH6, epitope retrieval solution 1) for 20 mins. The section was then incubated with ab72456, 1 µg/ml, for 15 mins at room temperature and detected using an HRP conjugated compact polymer system. DAB was used as the chromogen. The section was then counterstained with haematoxylin and mounted with DPX.

For other IHC staining systems (automated and non-automated) customers should optimize variable parameters such as antigen retrieval conditions, primary antibody concentration and antibody incubation times.

**Please note:** All products are "FOR RESEARCH USE ONLY. NOT FOR USE IN DIAGNOSTIC PROCEDURES"

### Our Abpromise to you: Quality guaranteed and expert technical support

- Replacement or refund for products not performing as stated on the datasheet
- Valid for 12 months from date of delivery
- Response to your inquiry within 24 hours
- We provide support in Chinese, English, French, German, Japanese and Spanish
- Extensive multi-media technical resources to help you
- We investigate all quality concerns to ensure our products perform to the highest standards

If the product does not perform as described on this datasheet, we will offer a refund or replacement. For full details of the Abpromise, please visit <https://www.abcam.cn/abpromise> or contact our technical team.

### Terms and conditions

- Guarantee only valid for products bought direct from Abcam or one of our authorized distributors