


Anti-EFHD2/SWS1 antibody ab119119

[1 References](#) [2 图像](#)

概述

产品名称	Anti-EFHD2/SWS1抗体
描述	兔多克隆抗体to EFHD2/SWS1
宿主	Rabbit
经测试应用	适用于: IHC-P
种属反应性	与反应: Human 预测可用于: Mouse, Rat 
免疫原	Synthetic peptide corresponding to Human EFHD2/SWS1 (N terminal) conjugated to keyhole limpet haemocyanin.
阳性对照	Human Thymus and Tonsil tissues
常规说明	<p>The Life Science industry has been in the grips of a reproducibility crisis for a number of years. Abcam is leading the way in addressing this with our range of recombinant monoclonal antibodies and knockout edited cell lines for gold-standard validation. Please check that this product meets your needs before purchasing.</p> <p>If you have any questions, special requirements or concerns, please send us an inquiry and/or contact our Support team ahead of purchase. Recommended alternatives for this product can be found below, along with publications, customer reviews and Q&As</p>

性能

形式	Liquid
存放说明	Shipped at 4°C. Store at +4°C short term (1-2 weeks). Store at -20°C or -80°C. Avoid freeze / thaw cycle.
存储溶液	pH: 7.4 Preservative: 0.02% Sodium azide Constituent: 99% PBS
纯度	Immunogen affinity purified
克隆	多克隆
同种型	IgG

应用

The Abpromise guarantee

Abpromise™ 承诺保证使用ab119119于以下的经测试应用

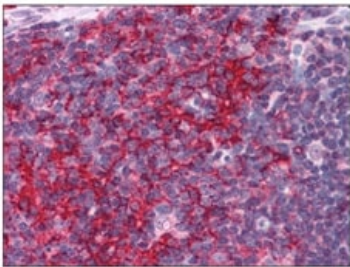
“应用说明”部分 下显示的仅为推荐的起始稀释度;实际最佳的稀释度/浓度应由使用者检定。

应用	Ab评论	说明
IHC-P		Use a concentration of 5 µg/ml.

靶标

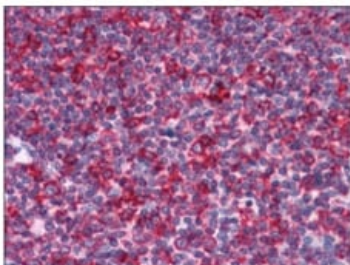
功能	May regulate B-cell receptor (BCR)-induced immature and primary B-cell apoptosis (By similarity). Plays a role as negative regulator of the canonical NF-kappa-B-activating branch (By similarity). Controls spontaneous apoptosis through the regulation of BCL2L1 abundance.
组织特异性	Found in lymphocytes; preferentially expressed in CD8+ cells.
序列相似性	Contains 2 EF-hand domains.
细胞定位	Membrane raft. In immature B-cell line WEHI231.

图片



Immunohistochemistry on Formalin-Fixed, Paraffin-Embedded Human Thymus tissue using ab119119 at 5 µg/ml.

Immunohistochemistry (Formalin/PFA-fixed paraffin-embedded sections) - Anti-EFHD2/SWS1 antibody (ab119119)



Immunohistochemistry on Formalin-Fixed, Paraffin-Embedded Human Tonsil tissue using ab119119 at 5 µg/ml.

Immunohistochemistry (Formalin/PFA-fixed paraffin-embedded sections) - Anti-EFHD2/SWS1 antibody (ab119119)

Please note: All products are "FOR RESEARCH USE ONLY. NOT FOR USE IN DIAGNOSTIC PROCEDURES"

Our Abpromise to you: Quality guaranteed and expert technical support

- Replacement or refund for products not performing as stated on the datasheet
- Valid for 12 months from date of delivery
- Response to your inquiry within 24 hours
- We provide support in Chinese, English, French, German, Japanese and Spanish
- Extensive multi-media technical resources to help you
- We investigate all quality concerns to ensure our products perform to the highest standards

If the product does not perform as described on this datasheet, we will offer a refund or replacement. For full details of the Abpromise, please visit <https://www.abcam.cn/abpromise> or contact our technical team.

Terms and conditions

- Guarantee only valid for products bought direct from Abcam or one of our authorized distributors