


# Anti-EEF2K (phospho S366) antibody ab51227

★★★★★ [2 Abreviews](#) [2 图像](#)

### 概述

|       |   |
|-------|---|
| 产品名称  | Anti-EEF2K (phospho S366)抗体   |
| 描述    | 兔多克隆抗体to EEF2K (phospho S366)   |
| 宿主    | Rabbit  |
| 经测试应用 | 适用于: IHC-P, WB  |
| 种属反应性 | 与反应: Human<br>预测可用于: Mouse, Rat    |
| 免疫原   | Synthetic peptide corresponding to Human EEF2K aa 300-400 (phospho S366).<br>Database link: <a href="#">O00418</a>  |
| 阳性对照  | Hela cells.   |
| 常规说明  | <p>The Life Science industry has been in the grips of a reproducibility crisis for a number of years. Abcam is leading the way in addressing this with our range of recombinant monoclonal antibodies and knockout edited cell lines for gold-standard validation. Please check that this product meets your needs before purchasing.</p> <p>If you have any questions, special requirements or concerns, please send us an inquiry and/or contact our Support team ahead of purchase. Recommended alternatives for this product can be found below, along with publications, customer reviews and Q&amp;As</p> |

### 性能

|      |  |
|------|--|
| 形式   | Liquid   |
| 存放说明 | Shipped at 4°C. Upon delivery aliquot and store at -20°C. Avoid freeze / thaw cycles.  |
| 存储溶液 | pH: 7.40<br>Preservative: 0.02% Sodium azide<br>Constituents: 50% Glycerol (glycerin, glycerine), 0.87% Sodium chloride, PBS   |
| 纯度   | Immunogen affinity purified  |
| 纯化说明 | The antibody was affinity-purified from rabbit antiserum by affinity-chromatography using epitope-specific phosphopeptide. The antibody against non-phosphopeptide was removed by chromatography using non-phosphopeptide corresponding to the phosphorylation site. |
| 克隆   | 多克隆  |
| 同种型  | IgG  |

## 应用

The Abpromise guarantee **Abpromise™**承诺保证使用ab51227于以下的经测试应用

“应用说明”部分下显示的仅为推荐的起始稀释度;实际最佳的稀释度/浓度应由使用者检定。

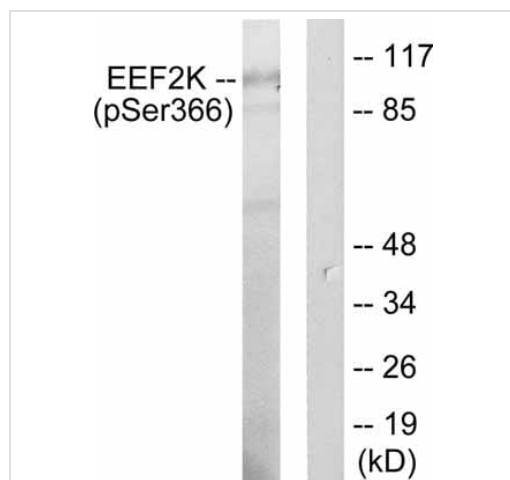
| 应用    | Ab评论      | 说明   |
|-------|-----------|--|
| IHC-P | ★★★★☆ (1) | 1/50 - 1/100.  |
| WB    |           | 1/300 - 1/1000. Detects a band of approximately 82 kDa (predicted molecular weight: 95 kDa). |

## 靶标

**功能** Phosphorylates eukaryotic elongation factor-2. Binds calmodulin.

**序列相似性** Belongs to the protein kinase superfamily. Alpha-type protein kinase family.  
Contains 1 alpha-type protein kinase domain.

## 图片



**All lanes :** Anti-EEF2K (phospho S366) antibody (ab51227) at 1/300 dilution

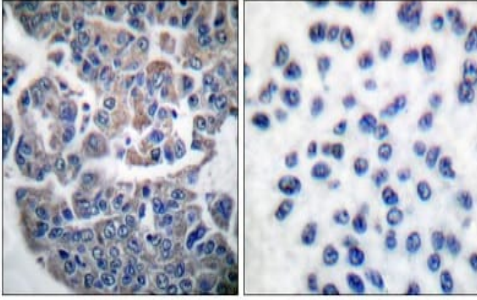
**Lane 1 :** Extracts of HeLa cells treated with 10% serum for 15mins.

**Lane 2 :** Extracts of HeLa cells treated with 10% serum for 15mins and phosphopeptide.

**Predicted band size:** 95 kDa

**Observed band size:** 100 kDa

Western blot - Anti-EEF2K (phospho S366) antibody (ab51227)



Immunohistochemical analysis of paraffin-embedded human breast carcinoma using ab51227 (right picture is blocked with the phospho peptide)

Immunohistochemistry (Formalin/PFA-fixed paraffin-embedded sections) - Anti-EEF2K (phospho S366) antibody (ab51227)

**Please note:** All products are "FOR RESEARCH USE ONLY. NOT FOR USE IN DIAGNOSTIC PROCEDURES"

### **Our Abpromise to you: Quality guaranteed and expert technical support**

---

- Replacement or refund for products not performing as stated on the datasheet
- Valid for 12 months from date of delivery
- Response to your inquiry within 24 hours
- We provide support in Chinese, English, French, German, Japanese and Spanish
- Extensive multi-media technical resources to help you
- We investigate all quality concerns to ensure our products perform to the highest standards

If the product does not perform as described on this datasheet, we will offer a refund or replacement. For full details of the Abpromise, please visit <https://www.abcam.cn/abpromise> or contact our technical team.

### **Terms and conditions**

---

- Guarantee only valid for products bought direct from Abcam or one of our authorized distributors